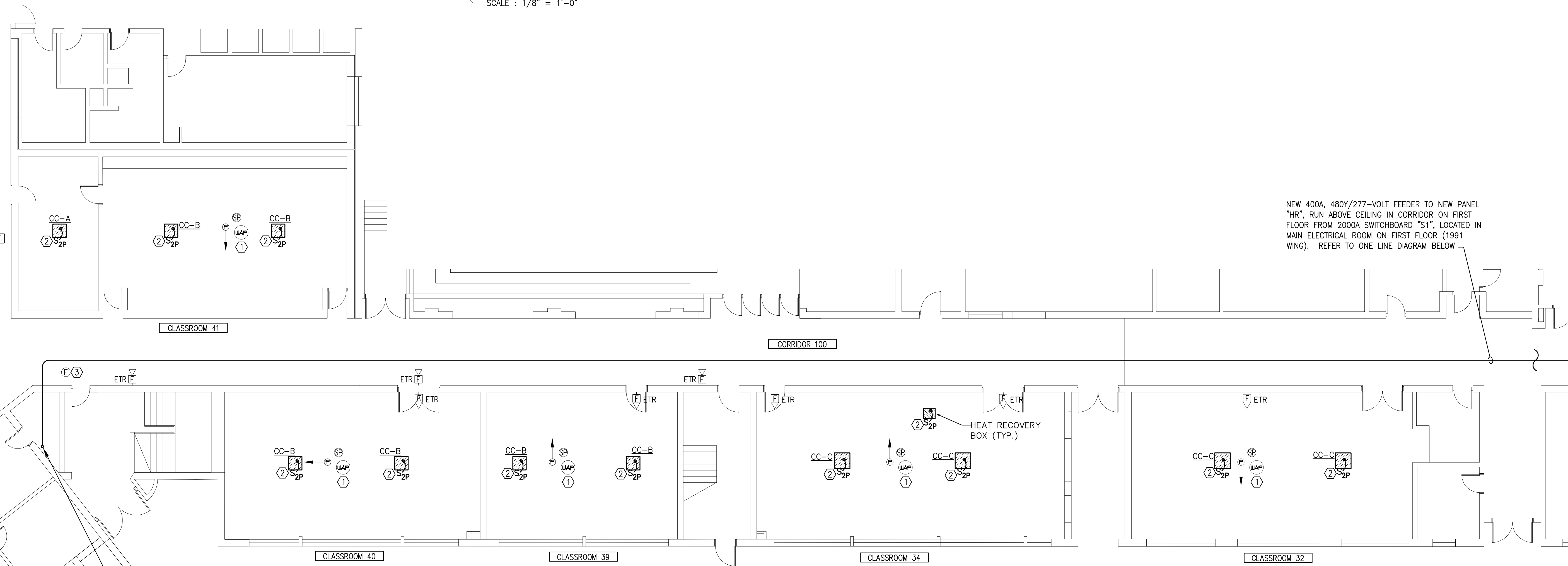


- LIGHTING PLAN NOTES**
- 1 PROVIDE NEW TYPE A 2' x 4' FIXTURES - LITHONIA MODEL# 2RTL4 72L MVOLT E21 LP835 N100 OR EQUIVALENT PRODUCT - AS SHOWN. EACH NEW FIXTURE SHALL PROVIDE A MINIMUM OF 7200 LUMENS. PROVIDE A NEW LITHONIA rLIGHT ENABLED DUAL TECHNOLOGY LOW VOLTAGE EXTENDED RANGE CEILING OCCUPANCY SENSOR. MODIFY EXISTING POWER WIRING TO RECONNECT ALL NEW FIXTURES TO EXISTING BRANCH LIGHTING CIRCUIT. USE #12 WIRE IN 3/4" CONDUIT. PROVIDE NEW TWO ZONE rLIGHT WALLPOD SWITCH WITH DIMMING IN PLACE OF THE EXISTING WALL SWITCHES. REUSE EXISTING RECESSED CONDUIT AND BOX IN WALL. CONNECT LIGHTS NEAREST TO TEACHING WALL TO ONE ZONE AND THE REMAINDER OF LIGHTS TO THE OTHER ZONE USING CAT-6 WIRE. CONNECT NEW OCCUPANCY SENSOR USING CAT-6 WIRE TO CONTROL ALL FIXTURES.
 - 2 CONNECT NEW TYPE B LIGHTS IN CORRIDOR TO EXISTING NORMAL AND EMERGENCY LIGHTING CIRCUITS. EXTEND EXISTING EMERGENCY LIGHTING CIRCUIT TO NEW EMERGENCY FIXTURE WHERE THE NEW FIXTURE DOES NOT MATCH THE EXISTING EMERGENCY LIGHT LOCATION. NEW TYPE B LIGHTS SHALL BE LITHONIA 2RTL4-30L-E21-LP835, TO PROVIDE 3000 LUMENS OF LIGHT, OR EQUIVALENT PRODUCT.
 - 3 PROVIDE NEW TYPE X LED EXIT LIGHTS TO REPLACE THE EXISTING. RECONNECT TO EXISTING EMERGENCY EGRESS CIRCUIT. NEW TYPE X EXIT LIGHT SHALL BE LITHONIA MODEL LQM-S-W-3-R-120/277, SINGLE FACE, WITH WHITE HOUSING COLOR, WITH RED LETTER COLOR, OR EQUIVALENT PRODUCT.
 - 4 PROVIDE NEW TYPE X2 LED EXIT LIGHTS TO REPLACE THE EXISTING. RECONNECT TO EXISTING EMERGENCY EGRESS CIRCUIT. NEW TYPE X2 EXIT LIGHT SHALL BE LITHONIA MODEL LQM-S-W-3-R-120/277, DOUBLE FACE WITH DIRECTIONAL ARROWS AS INDICATED ON PLANS, WITH WHITE HOUSING COLOR, WITH RED LETTER COLOR, OR EQUIVALENT PRODUCT.
- LIGHTING PLAN NOTES (CONT'D)**
- 5 REINSTALL EXISTING rLIGHT 2' x 4' LED LIGHTS IN NEW CEILING GRID. REINSTALL EXISTING rLIGHT MOTION SENSOR IN CEILING. RECONNECT EXISTING REINSTALLED LIGHTS TO EXISTING WALL MOUNTED rLIGHT DIMMER CONTROLS. RECONNECT ALL LOW VOLTAGE LIGHTING CONTROL CABLING BETWEEN rLIGHT FIXTURES, rLIGHT WALL DIMMER, rLIGHT DIMMING MODULE AND MOTION SENSOR SO ALL FUNCTION AS BEFORE.
 - 6 PROVIDE NEW TYPE C 2' x 4' FIXTURES - LITHONIA 2RTL4 48L MVOLT E21 LP835 N100 OR EQUIVALENT PRODUCT - AS SHOWN. EACH NEW FIXTURE SHALL PROVIDE A MINIMUM OF 4800 LUMENS. PROVIDE A NEW rLIGHT ENABLED DUAL TECHNOLOGY LOW VOLTAGE EXTENDED RANGE CEILING OCCUPANCY SENSOR. MODIFY EXISTING POWER WIRING TO RECONNECT ALL NEW FIXTURES TO EXISTING CIRCUIT. USE #12 WIRE IN 3/4" CONDUIT. PROVIDE NEW 3-WAY SINGLE ZONE rLIGHT WALLPOD SWITCH WITH DIMMING IN PLACE OF THE EXISTING WALL SWITCH. REUSE EXISTING RECESSED CONDUIT AND BOX IN WALL. CONNECT NEW LIGHTS TO NEW WALL POD WITH CAT-6 CABLE IN CONDUIT. CONNECT NEW OCCUPANCY SENSOR USING CAT-6 WIRE TO CONTROL ALL FIXTURES. REINSTALL EXISTING SPEAKER AND RECONNECT SO IT FUNCTIONS AS BEFORE.

FIRST FLOOR PLAN - LIGHTING - NEW WORK
SCALE : 1/8" = 1'-0"



FIRST FLOOR PLAN - POWER - NEW WORK
SCALE : 1/8" = 1'-0"

POWER PLAN NOTES

- 1 REINSTALL AND RECONNECT EXISTING CEILING MOUNTED PROJECTOR, SPEAKER, WAP AND ALL OTHER DEVICES THAT WERE REMOVED SO THAT THEY FUNCTION AS BEFORE.
- 2 USE AN EXISTING 208-VOLT, 1-PHASE CIRCUIT THAT FED ONE OF THE EXISTING CONDENSING UNITS ON ROOF THAT ARE BEING DEMOLISHED WHICH SERVES THE CLASSROOMS ON THE FIRST FLOOR (SEE SHEET E102). TRACE OUT CIRCUIT AND IDENTIFY CIRCUIT USED IN PANELBOARD DIRECTORY. PROVIDE (2)#10, #100-3/4" C TO EACH NEW CEILING MOUNTED INDOOR SPLIT SYSTEM UNIT (CC-UNIT), AND HEAT RECOVERY BOXES (HRB).
- 3 REINSTALL AND RECONNECT EXISTING FIRE ALARM SMOKE DETECTOR TO EXISTING FIRE ALARM INITIATION CIRCUIT TO FUNCTION AS BEFORE.
- 4 RELOCATE IDF TO THIS IT ROOM-VERIFY EXACT LOCATION WITH OWNER (SEE DEMOLITION NOTE #7 ON E103). PROVIDE TWO 4" SLEEVES UP TO CLOSET NEXT TO CLASSROOM 224. EXTEND 4" CONDUITS UP TO ABOVE CEILING ON SECOND FLOOR AND STUB OUT INTO CORRIDOR FOR NEW DATA WIRING. PROVIDE DUPLEX RECEPTACLE FOR RELOCATED IDF AND CONNECT TO NEAREST SOURCE OF 120V EMERGENCY POWER.

NEW 400A, 480Y/277-VOLT FEEDER TO NEW PANEL "HR", RUN ABOVE CEILING IN CORRIDOR ON FIRST FLOOR FROM 2000A SWITCHBOARD "S1", LOCATED IN MAIN ELECTRICAL ROOM ON FIRST FLOOR (1991 WING). REFER TO ONE LINE DIAGRAM BELOW

LOCATION OF EXISTING 2000A, 480Y/277-VOLT, 3ø, 4-WIRE SWITCHBOARD "S1". SEE SHEET E203, PANEL "HR" SCHEDULE, NOTE-1. ALSO, REFER TO SHEET E001, NEW PANEL "L4" SCHEDULE, FOR NEW CIRCUITS TO CAD LAB ROOM 157. REFER TO SHEET E001, PARTIAL ENLARGED PLAN-EXISTING MAIN ELECTRICAL ROOM, FOR NEW PANEL "L4" LOCATION

TYPICAL FOR ALL SHEETS
ALL SHOWN LIGHT IS EXISTING TO REMAIN. ALL SHOWN DASHED IS TO BE DEMOLISHED. ALL SHOWN DARK IS NEW WORK. SEAL ALL PENETRATIONS WEATHER PROOF. PAINT EXPOSED RACEWAY TO MATCH ADJACENT SURFACES. PAINT ALL SURFACES THAT ARE EXPOSED AFTER DEMOLITION TO MATCH ADJACENT SURFACES.

