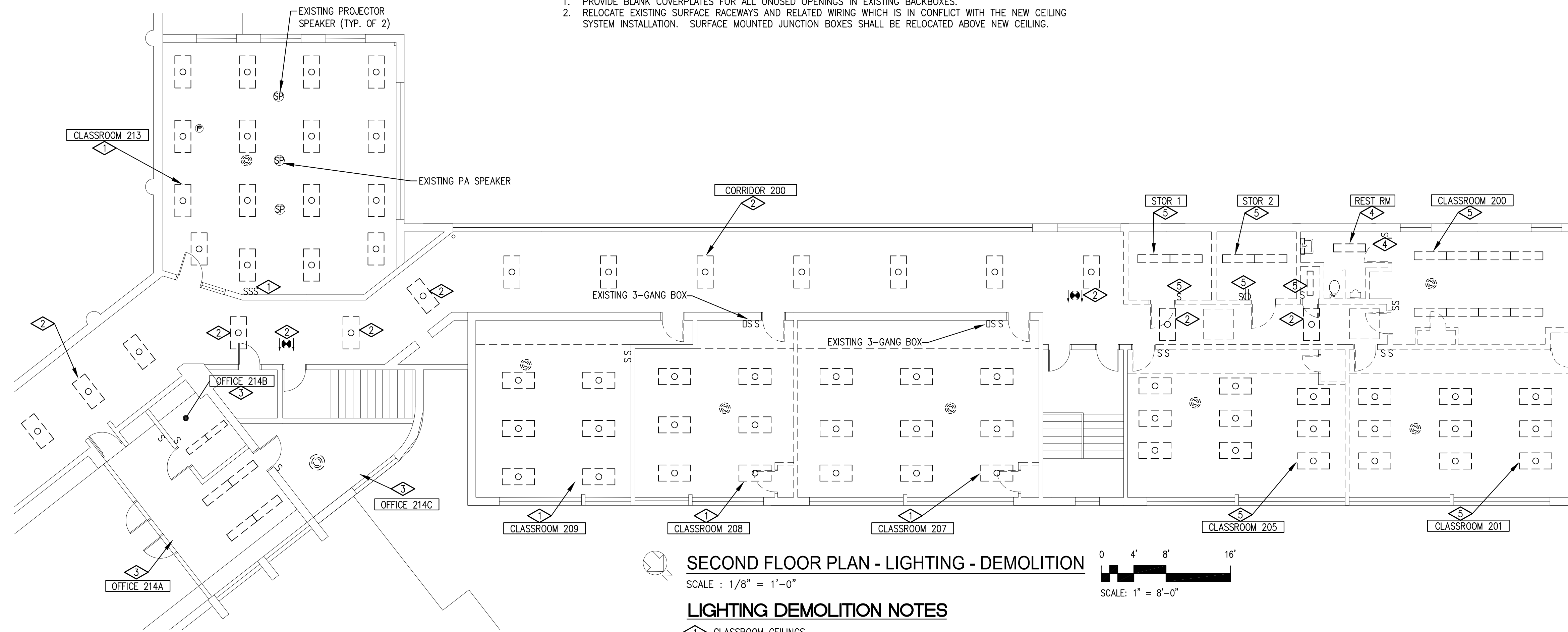


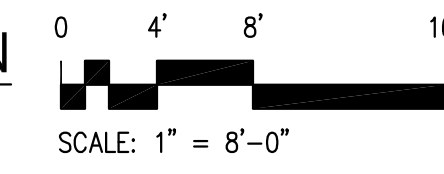
GENERAL NOTES:

1. PROVIDE BLANK COVERPLATES FOR ALL UNUSED OPENINGS IN EXISTING BACKBOXES.
2. RELOCATE EXISTING SURFACE RACEWAYS AND RELATED WIRING WHICH IS IN CONFLICT WITH THE NEW CEILING SYSTEM INSTALLATION. SURFACE MOUNTED JUNCTION BOXES SHALL BE RELOCATED ABOVE NEW CEILING.



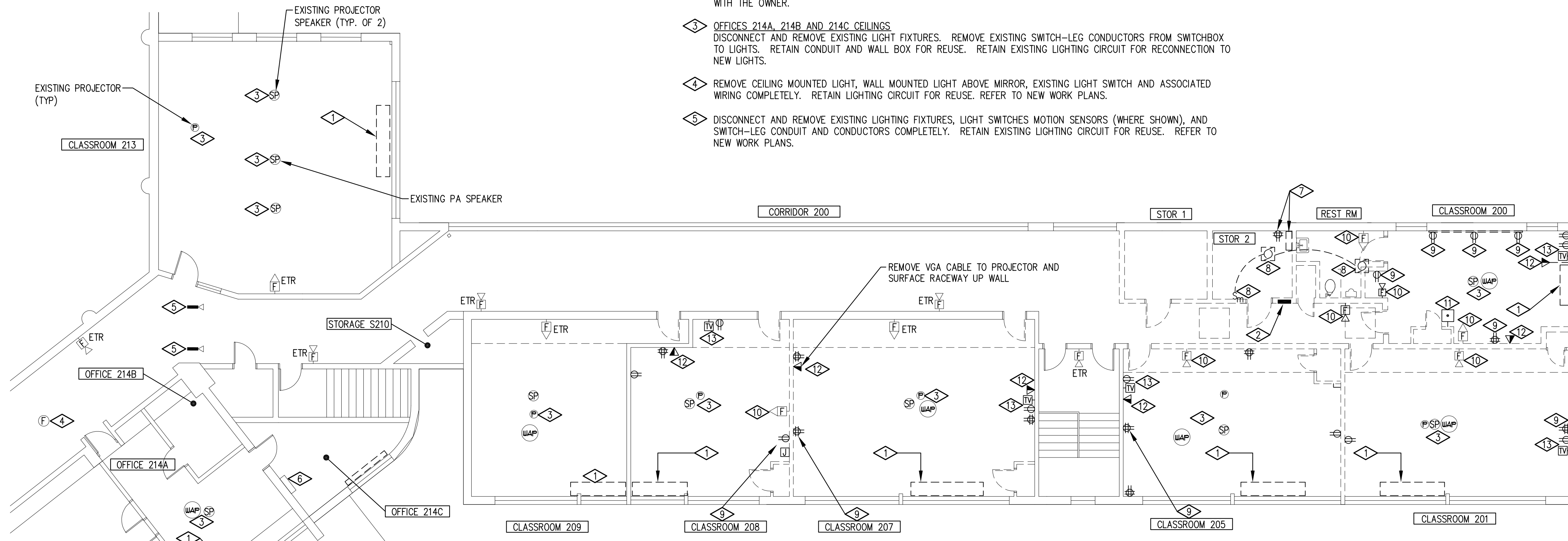
SECOND FLOOR PLAN - LIGHTING - DEMOLITION

SCALE : 1/8" = 1'-0"



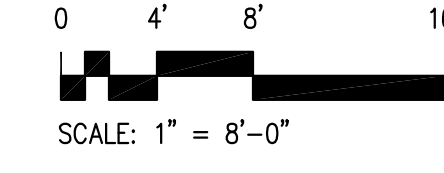
LIGHTING DEMOLITION NOTES

- 1. CLASSROOM CEILINGS
DISCONNECT AND REMOVE EXISTING LIGHTING FIXTURES AND CEILING MOUNTED MOTION SENSORS AND RELAY POWER PACKS. REMOVE SWITCH-LEG CONDUCTORS FROM SWITCHES TO EXISTING LIGHTS. RETAIN EXISTING LIGHTING CONTROL TOGGLE SWITCH BACK BOXES FOR REUSE. RETAIN SWITCH-LEG CONDUIT FOR REUSE. RETAIN EXISTING LIGHTING CIRCUIT FOR REUSE. REFER TO NEW WORK PLANS. WHERE EXISTING WALL SWITCH BOX IS A 3-GANG BOX, WHERE ONE OF THE OUTLETS IS NOT BEING USED, PROVIDE A BLANK COVERPLATE FOR THE UNUSED OPENING.
- 2. CORRIDOR CEILINGS AND STAIRS
DEMOLISH ALL EXISTING 2' X 4' LIGHTS AND EXIT LIGHTS, RETAIN EXISTING BRANCH LIGHTING CIRCUIT(S) FOR RECONNECTION TO NEW LIGHTS. REPLACE EXISTING CORRIDOR LIGHTING KEY SWITCHES WITH NEW KEY SWITCHES, RATING, SINGLE POLE OR 3-WAY, AND VOLTAGE TO MATCH EXISTING. COORDINATE KEY SWITCHES TO BE REPLACED WITH THE OWNER.
- 3. OFFICES 214A, 214B AND 214C CEILINGS
DISCONNECT AND REMOVE EXISTING LIGHT FIXTURES. REMOVE EXISTING SWITCH-LEG CONDUCTORS FROM SWITCHBOX TO LIGHTS. RETAIN CONDUIT AND WALL BOX FOR REUSE. RETAIN EXISTING LIGHTING CIRCUIT FOR RECONNECTION TO NEW LIGHTS.
- 4. REMOVE CEILING MOUNTED LIGHT, WALL MOUNTED LIGHT ABOVE MIRROR, EXISTING LIGHT SWITCH AND ASSOCIATED WIRING COMPLETELY. RETAIN LIGHTING CIRCUIT FOR REUSE. REFER TO NEW WORK PLANS.
- 5. DISCONNECT AND REMOVE EXISTING LIGHTING FIXTURES, LIGHT SWITCHES MOTION SENSORS (WHERE SHOWN), AND SWITCH-LEG CONDUIT AND CONDUCTORS COMPLETELY. RETAIN EXISTING LIGHTING CIRCUIT FOR REUSE. REFER TO NEW WORK PLANS.



SECOND FLOOR PLAN - POWER - DEMOLITION

SCALE : 1/8" = 1'-0"

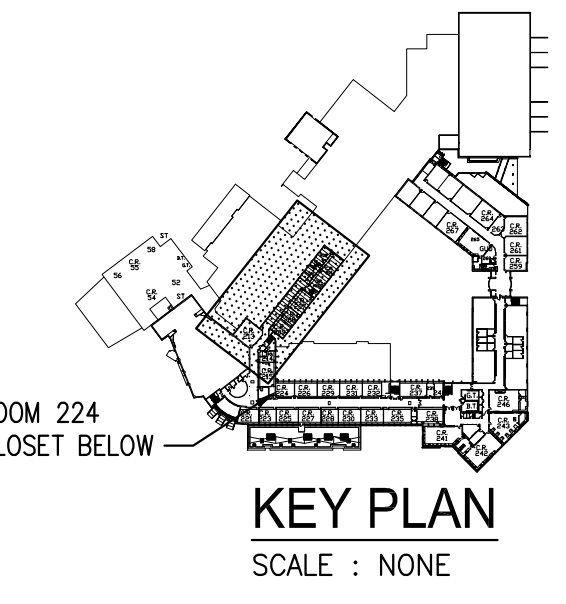


POWER DEMOLITION NOTES

- 1. REMOVE ALL ELECTRICAL ASSOCIATED WITH THE UNIT VENTILATOR BEING REMOVED. REMOVE ALL WIRING BACK TO SOURCE. REMOVE ALL UNUSED CONDUIT AND RACEWAYS. MARK EXISTING CIRCUIT(S) *SPARE.
- 2. EXISTING PANELBOARD "L20" TO BE REPLACED AND RELOCATED. RETAIN EXISTING FEEDER FOR RECONNECTION TO NEW REPLACEMENT PANEL. PROVIDE A NEW SPLICE BOX ABOVE CEILING ON FIRST FLOOR AND SECOND FLOOR FOR EXTENDING EXISTING CIRCUITS STILL IN USE TO NEW REPLACEMENT PANEL LOCATION. REFER TO NEW WORK POWER PLANS.
- 3. REMOVE EXISTING CEILING MOUNTED SPEAKERS, PROJECTOR ASSEMBLIES AND WAP DEVICES AND RETAIN IN A SECURE DRY LOCATION FOR REINSTALLATION IN THE NEW CEILING. RETAIN ALL LOW VOLTAGE WIRING FOR EXISTING A/V AND DATA DEVICES FOR RECONNECTION.
- 4. DISCONNECT AND REMOVE EXISTING CEILING MOUNTED FIRE ALARM SMOKE DETECTOR. RETAIN FIRE ALARM CABLING FOR RECONNECTION. STORE FIRE ALARM SMOKE DETECTOR IN A SECURED DRY LOCATION FOR REINSTALLATION IN NEW CEILING. REFER TO NEW WORK PLANS.
- 5. DISCONNECT EXISTING CEILING MOUNTED SECURITY SYSTEM CCTV CAMERA. RETAIN CCTV CABLING FOR RECONNECTION. STORE CAMERAS IN A SECURED DRY LOCATION FOR REINSTALLATION IN NEW CEILING. REFER TO NEW WORK PLANS.
- 6. EXISTING FIRE ALARM PAD-3 NAC EXTENDER PANEL SHALL REMAIN IN SERVICE.
- 7. REMOVE EXISTING QUAD RECEPTACLE AT EXISTING IDF RACK AND ALL ASSOCIATED CONDUIT AND WIRING BACK TO SOURCE. EXISTING IDF RACK SHALL BE RELOCATED TO EXISTING DATA CLOSET ON FIRST FLOOR BELOW ROOM 224. REMOVE EXISTING CONDUIT FROM IDF RACK UP THROUGH CEILING. REMOVE ALL TELECOM CABLING FROM IDF RACK TO EXISTING TELECOM OUTLETS BEING REMOVED. COORDINATE THIS WORK WITH THE OWNER'S IT STAFF. EXISTING ACTIVE WIRING SHALL BE RETAINED FOR REUSE AND RECONNECTION. SEE KEY PLAN THIS SHEET FOR CLASSROOM 224.

POWER DEMOLITION NOTES (CONT'D)

- 8. REMOVE EXISTING CIRCUIT FEEDING EXISTING EXHAUST FANS COMPLETELY BACK TO SOURCE. EXHAUST FANS SHALL BE REMOVED. REFER TO HVAC DRAWINGS.
- 9. REMOVE EXISTING RECEPTACLES, CONDUIT/SURFACE RACEWAYS, JUNCTION BOXES AND CIRCUIT CONDUCTORS COMPLETELY BACK TO SOURCE PANEL. REFER TO NEW WORK PLAN.
- 10. REMOVE EXISTING WALL MOUNTED FIRE ALARM HORN/STROBE DEVICE, RETAIN WIRING FOR RECONNECTION TO RELOCATED FIRE ALARM VISUAL DEVICE. RETAIN AND SECURE EXISTING FIRE ALARM HORN/STROBE DEVICE IN DRY LOCATION FOR REINSTALLATION IN NEW WALL. TURN OVER UNUSED FIRE ALARM DEVICES TO OWNER.
- 11. REMOVE EXISTING PUSH-TO-CALL BUTTON, CONDUIT AND WIRING BACK TO NEAREST JUNCTION BOX AND CAP. DEVICE IS NO LONGER IN USE. TURN OVER REMOVED CALL DEVICE TO OWNER.
- 12. REMOVE EXISTING TELECOM OUTLET, CABLING AND CONDUIT BACK TO EXISTING IDF RACK COMPLETELY.
- 13. REMOVE EXISTING RECEPTACLE, CONDUIT AND CONDUCTORS COMPLETELY BACK TO SOURCE PANEL. REMOVE EXISTING TV OUTLET, CONDUIT AND RELATED LOW VOLTAGE WIRING COMPLETELY BACK TO HEADEND EQUIPMENT. THESE DEVICES ARE MOUNTED APPROXIMATELY 84" AFF.



KEY PLAN
SCALE : NONE

**AHS
MODERNIZATION/
HVAC UPGRADE**

ALBEMARLE COUNTY
PUBLIC SCHOOLS

2775 HYDRAULIC ROAD
CHARLOTTESVILLE, VA
22901

© BCWH, Inc.
Material included herein is owned by copyright. Use of this work in whole or in part is forbidden without the expressed written consent of BCWH, Inc.

PROJECT NUMBER:
2016.40

PROJECT MANAGER:
TAR

DRAWN BY:
CMD

ISSUE DATE:
3/24/2017

BID DOCUMENTS

REVISIONS:



SHEET TITLE:
SECOND FLOOR PLAN - ELECTRICAL -
DEMOLITION

SHEET NUMBER:

E103