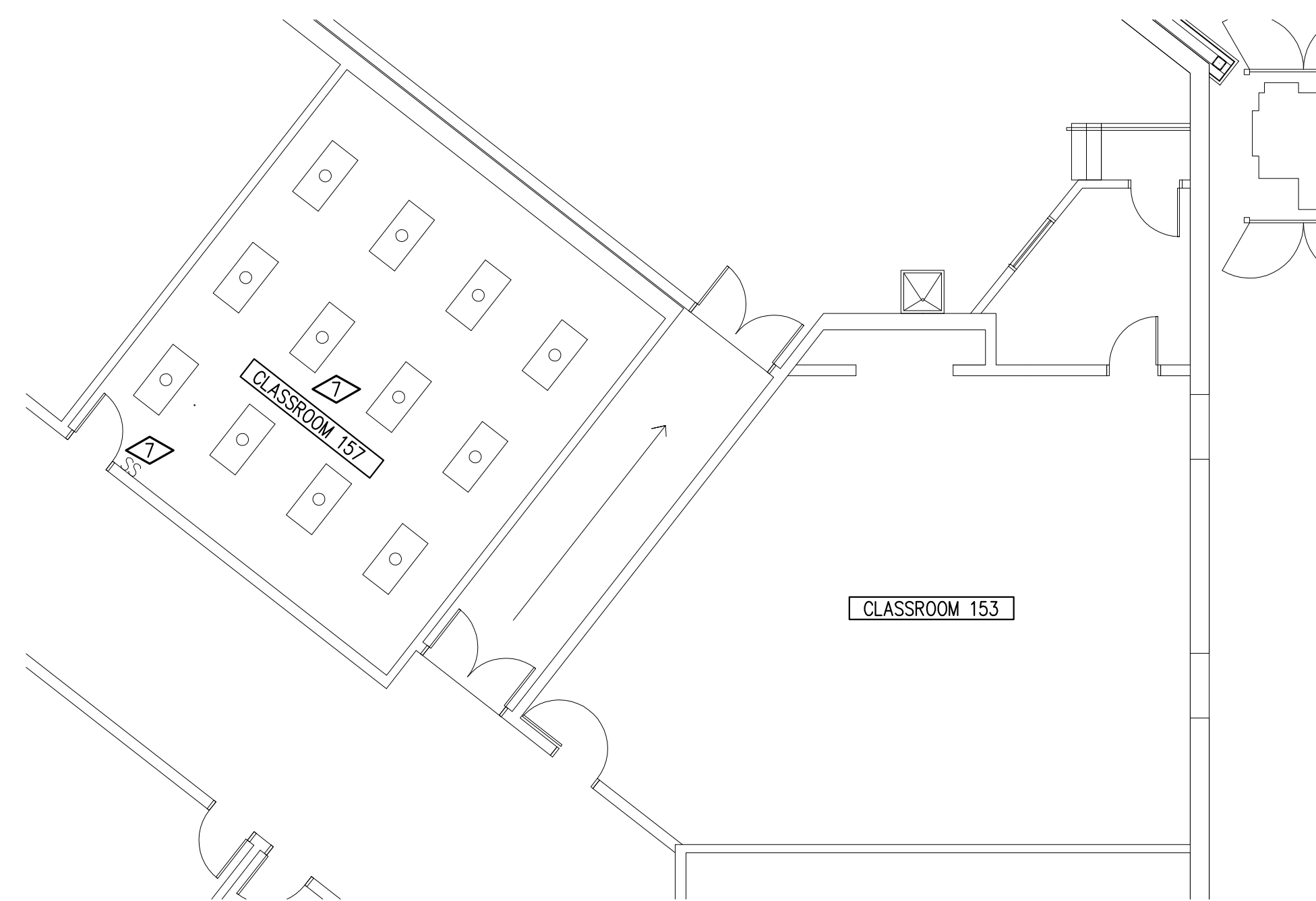


**GENERAL NOTES:**

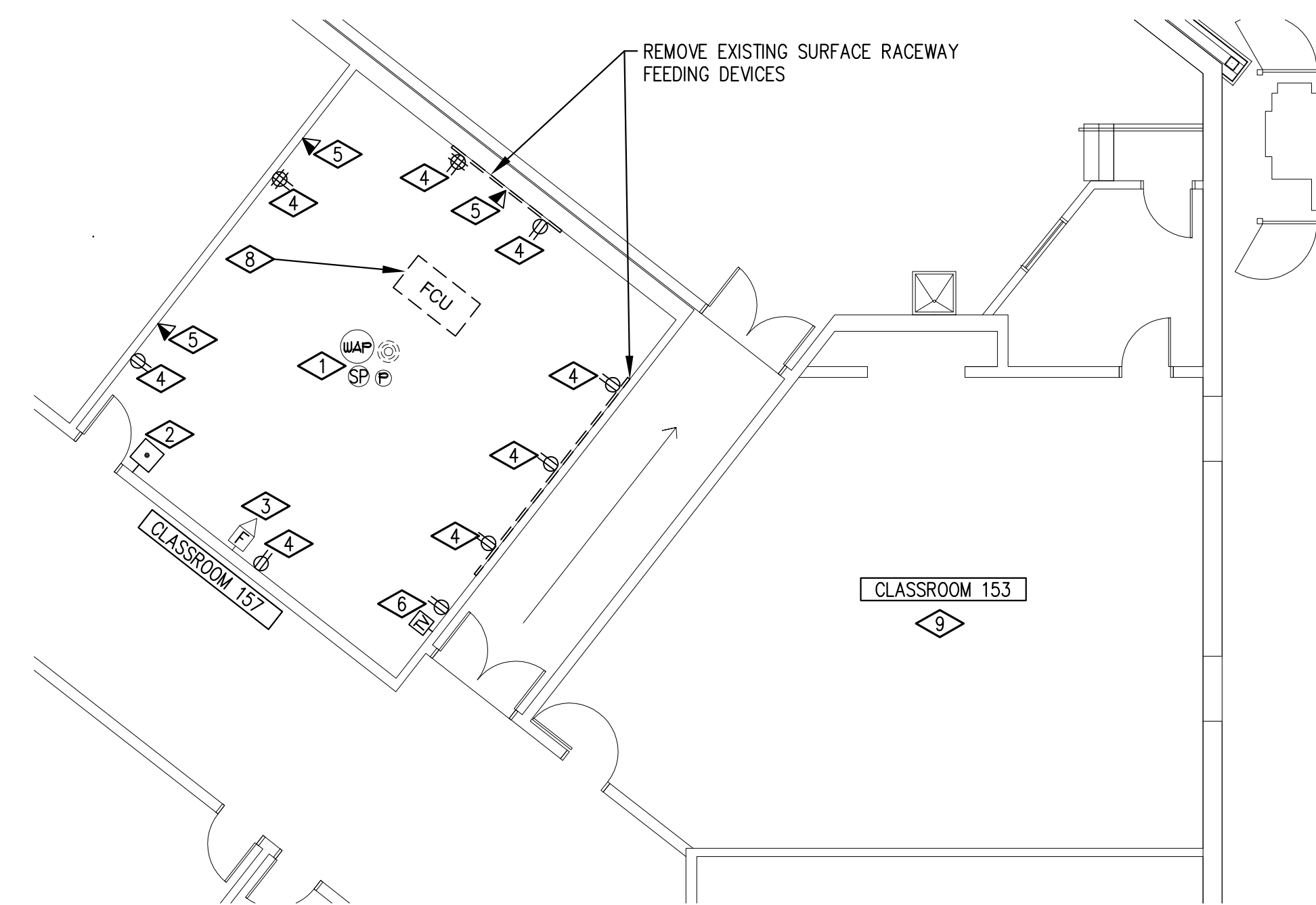
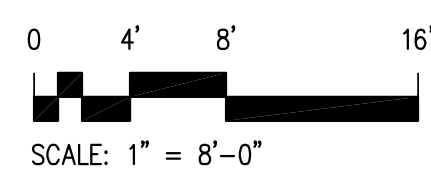
1. PROVIDE BLANK COVERPLATES FOR ALL UNUSED OPENINGS IN EXISTING BACKBOXES.
2. RELOCATE EXISTING SURFACE RACEWAYS AND RELATED WIRING WHICH IS IN CONFLICT WITH THE NEW CEILING SYSTEM INSTALLATION. SURFACE MOUNTED JUNCTION BOXES SHALL BE RELOCATED ABOVE NEW CEILING.



**ADD ALTERNATE #2**

**FIRST FLOOR PLAN CAD LAB - LIGHTING - DEMOLITION**

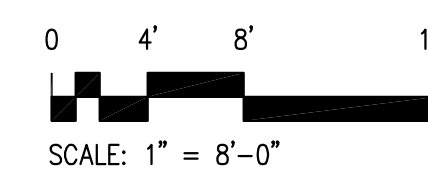
SCALE : 1/8" = 1'-0"



**ADD ALTERNATE #2**

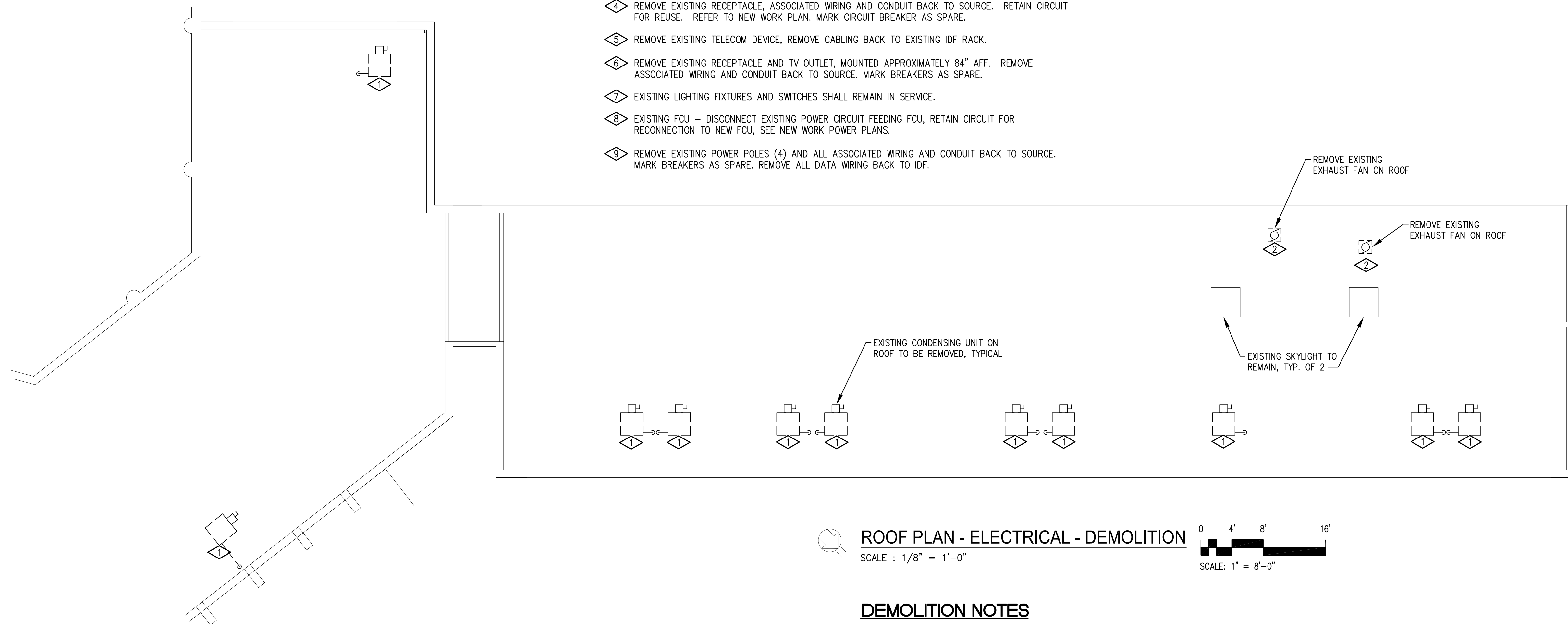
**FIRST FLOOR PLAN CAD LAB - POWER - DEMOLITION**

SCALE : 1/8" = 1'-0"



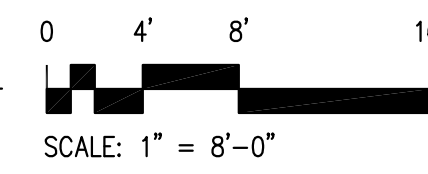
**LIGHTING AND POWER PLANS DEMOLITION NOTES**

- ◇ CLASSROOM 157 CEILING  
EXISTING CEILING MOUNTED OCCUPANCY SENSORS, SPEAKERS, WIRELESS ACCESS POINTS AND ANY OTHER EXISTING DEVICES ON THE CEILING SHALL REMAIN IN SERVICE.
- ◇ REMOVE EXISTING PUSH-TO-CALL BUTTON AND WIRING BACK TO NEAREST JUNCTION BOX AND CAP. DEVICE IS NO LONGER IN USE. PROVIDE BLANK COVERPLATE OVER WALL BOX. TURN OVER REMOVED CALL DEVICE TO OWNER.
- ◇ EXISTING WALL MOUNTED FIRE ALARM VISUAL STROBE AND HORN/STROBE DEVICES SHALL REMAIN.
- ◇ REMOVE EXISTING RECEPTACLE, ASSOCIATED WIRING AND CONDUIT BACK TO SOURCE. RETAIN CIRCUIT FOR REUSE. REFER TO NEW WORK PLAN. MARK CIRCUIT BREAKER AS SPARE.
- ◇ REMOVE EXISTING TELECOM DEVICE, REMOVE CABLING BACK TO EXISTING IDF RACK.
- ◇ REMOVE EXISTING RECEPTACLE AND TV OUTLET, MOUNTED APPROXIMATELY 84" AFF. REMOVE ASSOCIATED WIRING AND CONDUIT BACK TO SOURCE. MARK BREAKERS AS SPARE.
- ◇ EXISTING LIGHTING FIXTURES AND SWITCHES SHALL REMAIN IN SERVICE.
- ◇ EXISTING FCU - DISCONNECT EXISTING POWER CIRCUIT FEEDING FCU, RETAIN CIRCUIT FOR RECONNECTION TO NEW FCU, SEE NEW WORK POWER PLANS.
- ◇ REMOVE EXISTING POWER POLES (4) AND ALL ASSOCIATED WIRING AND CONDUIT BACK TO SOURCE. MARK BREAKERS AS SPARE. REMOVE ALL DATA WIRING BACK TO IDF.



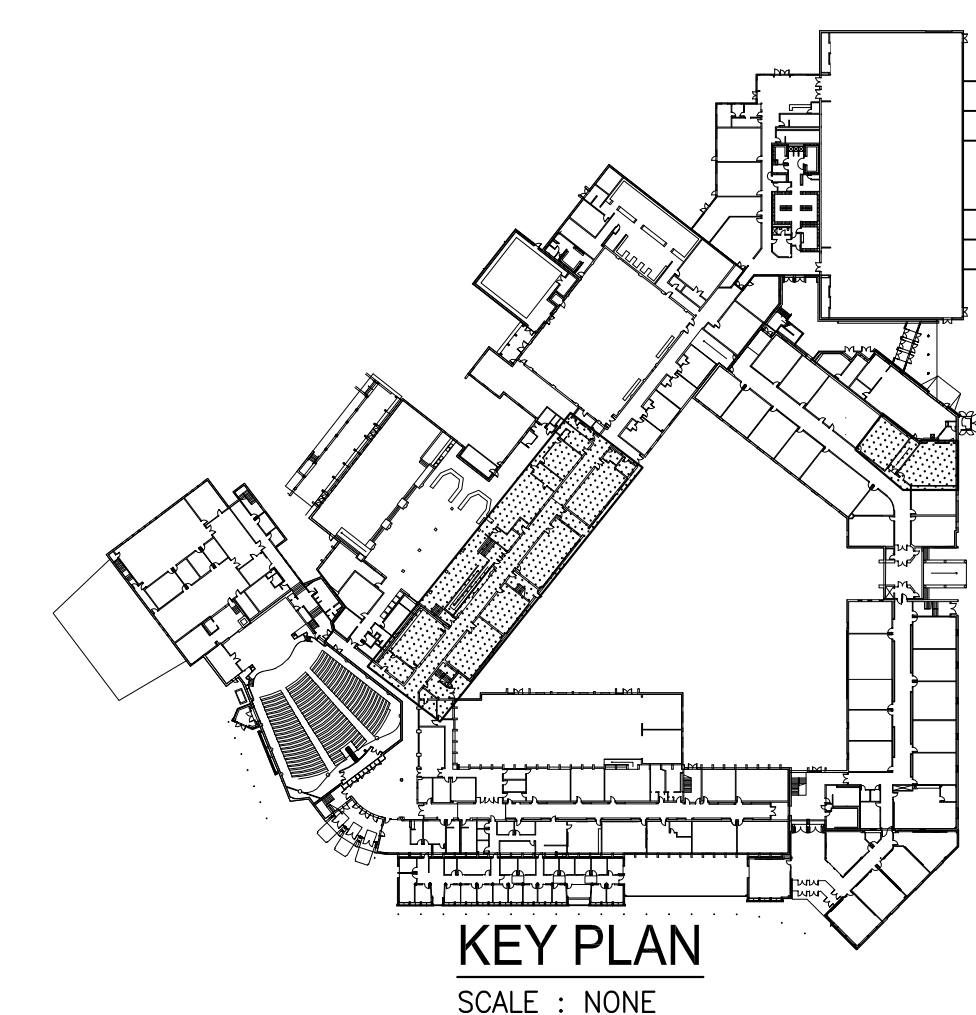
**ROOF PLAN - ELECTRICAL - DEMOLITION**

SCALE : 1/8" = 1'-0"



**DEMOLITION NOTES**

- ◇ DISCONNECT AND REMOVE EXISTING CIRCUIT CONDUCTORS, DISCONNECT SWITCH, SUPPORTS AND CONDUIT/FLEX FEEDING EXISTING CONDENSING UNIT COMPLETELY BACK TO SOURCE. TRACE OUT CIRCUITS AND PROVIDE A NEW PANELBOARD DIRECTORY. MARK CIRCUITS "SPARE" FOR CIRCUITS REMOVED FEEDING EXISTING CONDENSING UNITS BEING DEMOLISHED. ONE 208-VOLT CIRCUIT THAT FED AN EXISTING CONDENSING UNIT BEING REMOVED SHALL BE REUSED TO FEED THE NEW INDOOR SPLIT SYSTEMS. PROVIDE A NEW 20A/2P BREAKER IN EXISTING PANEL TO FEED THE NEW INDOOR SPLIT SYSTEMS. NEW BREAKER SHALL MATCH THE EXISTING PANEL'S FRAME TYPE AND KAIC RATING. REFER TO NEW WORK POWER PLAN.
- ◇ DISCONNECT AND REMOVE EXISTING CIRCUIT CONDUCTORS, DISCONNECT SWITCH, SUPPORTS AND CONDUIT/FLEX FEEDING EXISTING EXHAUST FAN COMPLETELY BACK TO SOURCE. MARK BREAKER "SPARE".



**KEY PLAN**  
SCALE : NONE

