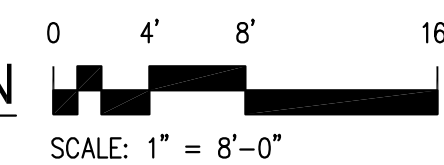


GENERAL NOTES:

1. PROVIDE BLANK COVERPLATES FOR ALL UNUSED OPENINGS IN EXISTING BACKBOXES.
2. RELOCATE EXISTING SURFACE RACEWAYS AND RELATED WIRING WHICH IS IN CONFLICT WITH THE NEW CEILING SYSTEM INSTALLATION. SURFACE MOUNTED JUNCTION BOXES SHALL BE RELOCATED ABOVE NEW CEILING.

FIRST FLOOR PLAN - LIGHTING - DEMOLITION
SCALE : 1/8" = 1'-0"

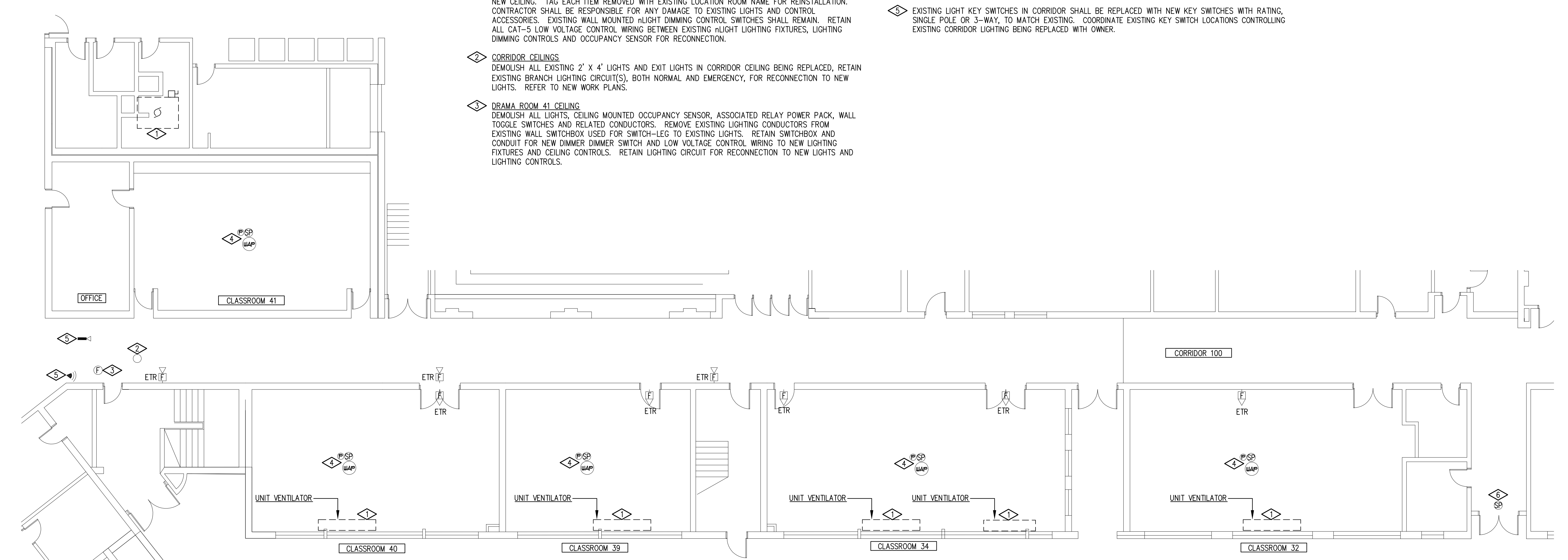


LIGHTING DEMOLITION NOTES

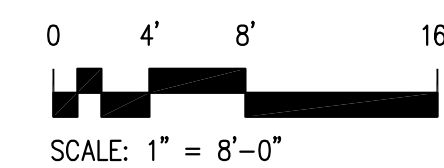
- ◇ CLASSROOM CEILINGS
DISCONNECT AND REMOVE EXISTING LIGHT LIGHTING FIXTURES AND LIGHT MOTION SENSORS, ASSOCIATED LIGHT DIMMING MODULES AND RETAIN IN A SECURE DRY LOCATION FOR REINSTALLATION IN NEW CEILING. TAG EACH ITEM REMOVED WITH EXISTING LOCATION ROOM NAME FOR REINSTALLATION. CONTRACTOR SHALL BE RESPONSIBLE FOR ANY DAMAGE TO EXISTING LIGHTS AND CONTROL ACCESSORIES. EXISTING WALL MOUNTED LIGHT DIMMING CONTROL SWITCHES SHALL REMAIN. RETAIN ALL CAT-5 LOW VOLTAGE CONTROL WIRING BETWEEN EXISTING LIGHT LIGHTING FIXTURES, LIGHTING DIMMING CONTROLS AND OCCUPANCY SENSOR FOR RECONNECTION.
- ◇ CORRIDOR CEILINGS
DEMOLISH ALL EXISTING 2' X 4' LIGHTS AND EXIT LIGHTS IN CORRIDOR CEILING BEING REPLACED, RETAIN EXISTING BRANCH LIGHTING CIRCUIT(S), BOTH NORMAL AND EMERGENCY, FOR RECONNECTION TO NEW LIGHTS. REFER TO NEW WORK PLANS.
- ◇ DRAMA ROOM 41 CEILING
DEMOLISH ALL LIGHTS, CEILING MOUNTED OCCUPANCY SENSOR, ASSOCIATED RELAY POWER PACK, WALL TOGGLE SWITCHES AND RELATED CONDUCTORS. REMOVE EXISTING LIGHTING CONDUCTORS FROM EXISTING WALL SWITCHBOX USED FOR SWITCH-LEG TO EXISTING LIGHTS. RETAIN SWITCHBOX AND CONDUIT FOR NEW DIMMER DIMMER SWITCH AND LOW VOLTAGE CONTROL WIRING TO NEW LIGHTING FIXTURES AND CEILING CONTROLS. RETAIN LIGHTING CIRCUIT FOR RECONNECTION TO NEW LIGHTS AND LIGHTING CONTROLS.

LIGHTING DEMOLITION NOTES CONT'D

- ◇ OFFICE CEILING
DISCONNECT AND REMOVE EXISTING LIGHT FIXTURES. REMOVE EXISTING LIGHT TOGGLE SWITCHES AND SWITCHLEG CONDUCTORS. RETAIN LIGHTING CIRCUIT FOR RECONNECTION TO NEW FIXTURES.
- ◇ EXISTING LIGHT KEY SWITCHES IN CORRIDOR SHALL BE REPLACED WITH NEW KEY SWITCHES WITH RATING, SINGLE POLE OR 3-WAY, TO MATCH EXISTING. COORDINATE EXISTING KEY SWITCH LOCATIONS CONTROLLING EXISTING CORRIDOR LIGHTING BEING REPLACED WITH OWNER.



FIRST FLOOR PLAN - POWER - DEMOLITION
SCALE : 1/8" = 1'-0"



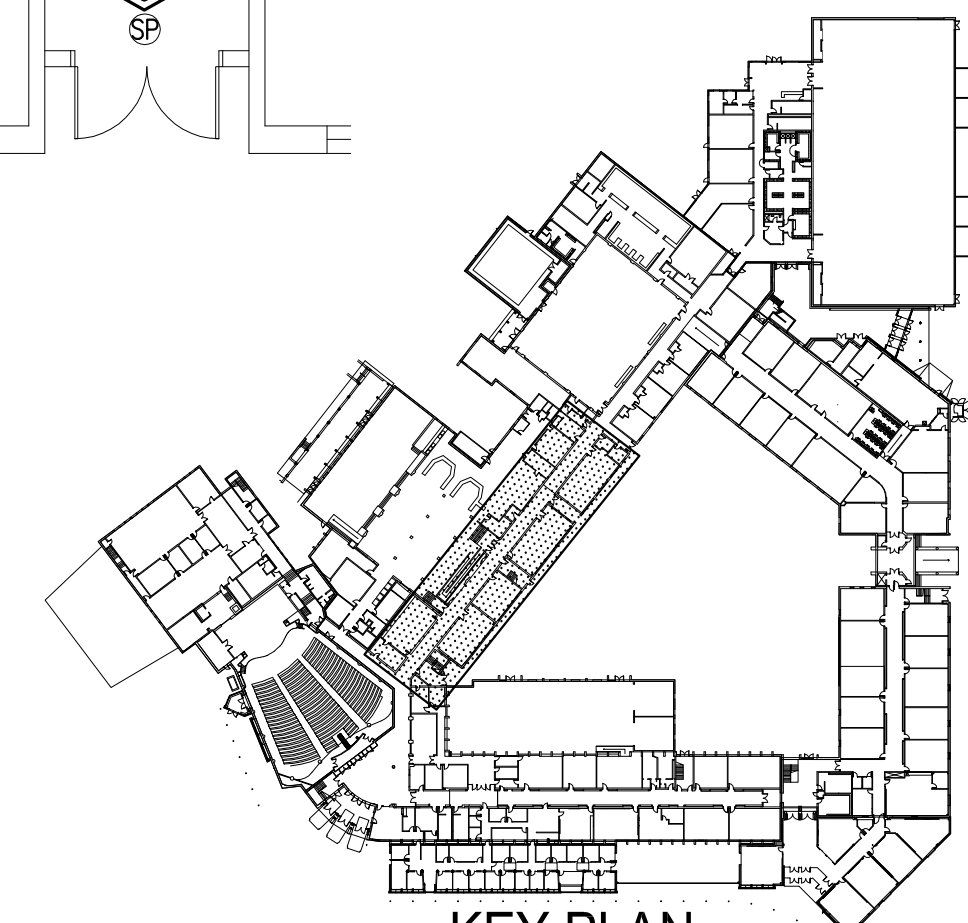
POWER DEMOLITION NOTES

- ◇ REMOVE ALL ELECTRICAL ASSOCIATED WITH THE UNIT VENTILATOR BEING REMOVED. REMOVE ALL WIRING BACK TO SOURCE. REMOVE ALL UNUSED CONDUIT AND RACEWAYS. MARK EXISTING CIRCUIT(S) "SPARE".
- ◇ DISCONNECT AND REMOVE EXISTING CELL PHONE SIGNAL EXTENDER DEVICE (NO LONGER IN USE). REMOVE CONDUIT/CABLING BACK TO EXISTING HEADEND EQUIPMENT.
- ◇ DISCONNECT AND REMOVE EXISTING CEILING MOUNTED FIRE ALARM SMOKE DETECTOR, RETAIN CABLING FOR RECONNECTION. STORE SMOKE DETECTOR IN A SECURED DRY LOCATION FOR REINSTALLATION IN NEW CEILING. REFER TO NEW WORK PLANS.
- ◇ REMOVE EXISTING CEILING MOUNTED PROJECTOR ASSEMBLY, INTERCOM SPEAKER AND WAP DEVICE AND STORE IN A SECURE DRY LOCATION FOR REINSTALLATION IN NEW CEILING. REFER TO NEW WORK PLANS.
- ◇ DISCONNECT EXISTING CEILING MOUNTED SECURITY SYSTEM MOTION SENSOR AND CCTV CAMERA AND STORE IN A SECURE DRY LOCATION FOR REINSTALLATION IN NEW CEILING. REFER TO NEW WORK PLANS.

POWER DEMOLITION NOTES (CONT'D)

- ◇ DISCONNECT AND REMOVE EXISTING CEILING INTERCOM SPEAKER, RETAIN WIRING FOR RECONNECTION. RETAIN SPEAKER IN A SECURE DRY LOCATION FOR REINSTALLATION.

TYPICAL FOR ALL SHEETS
ALL SHOWN LIGHT IS EXISTING TO REMAIN.
ALL SHOWN DASHED IS TO BE DEMOLISHED.
ALL SHOWN DARK IS NEW WORK.
SEAL ALL PENETRATIONS WEATHER PROOF.
PAINT EXPOSED RACEWAY TO MATCH ADJACENT SURFACES.
PAINT ALL SURFACES THAT ARE EXPOSED AFTER DEMOLITION TO MATCH ADJACENT SURFACES.



KEY PLAN
SCALE : NONE