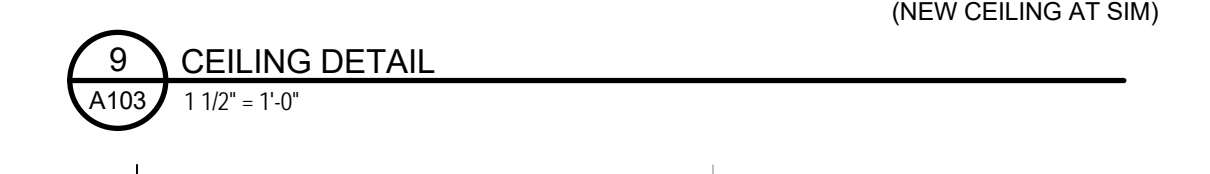
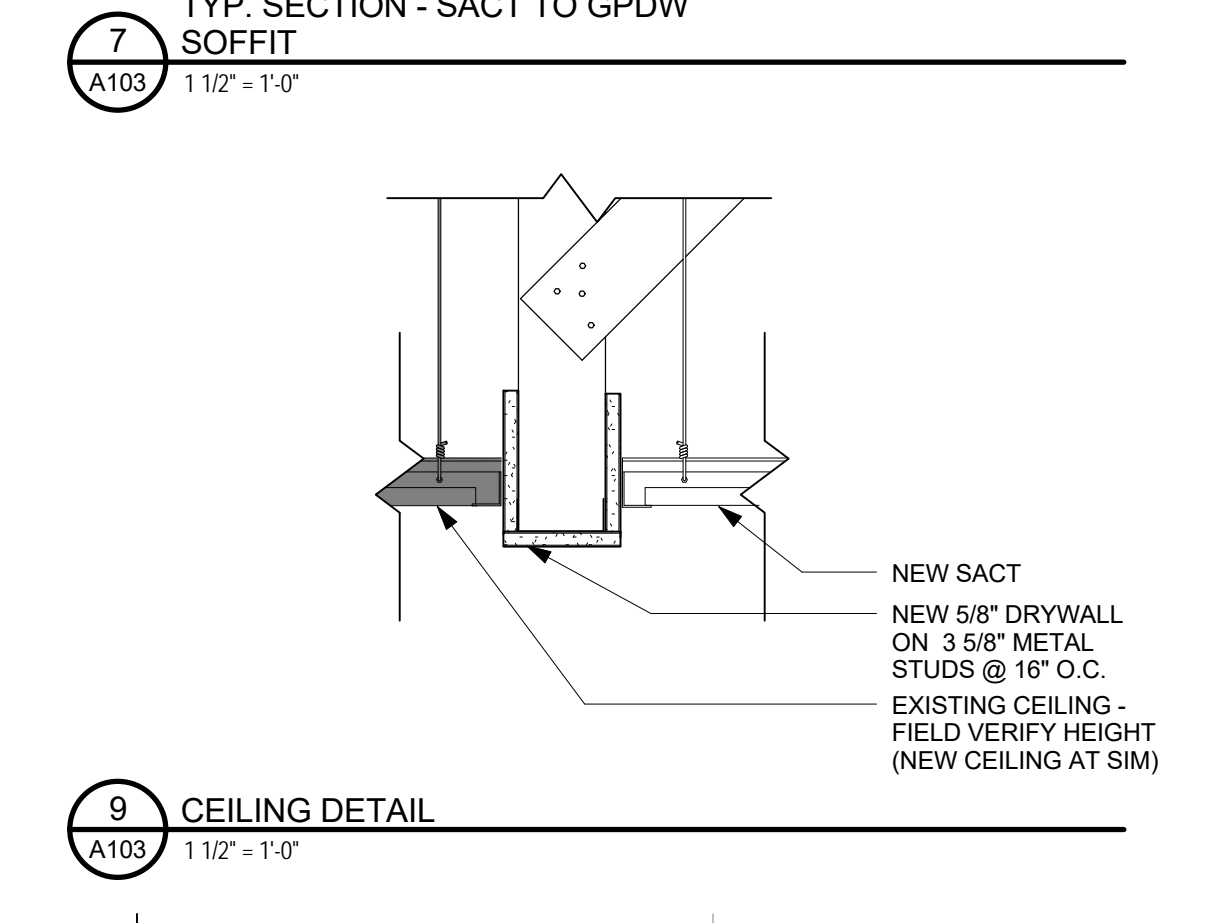
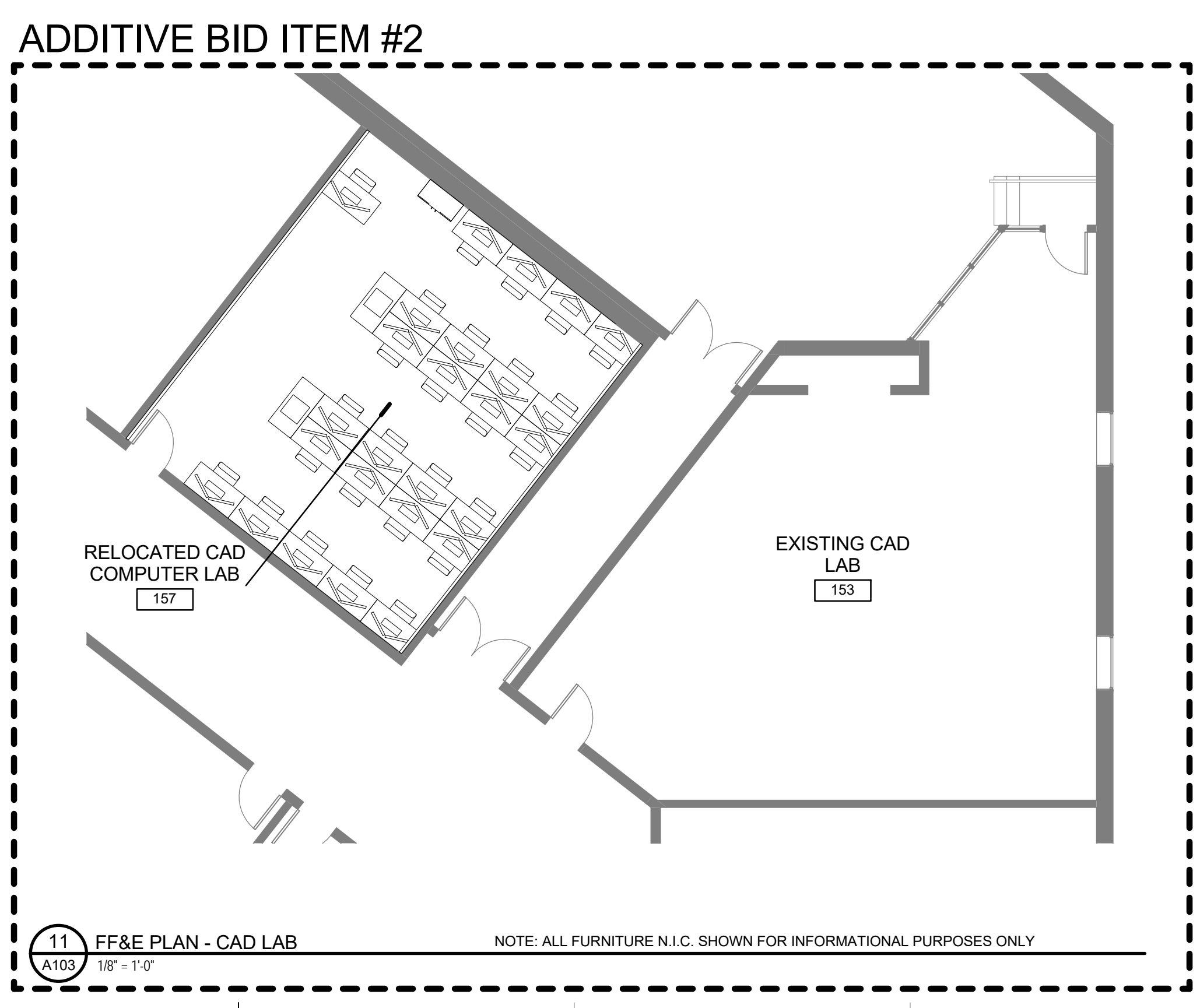
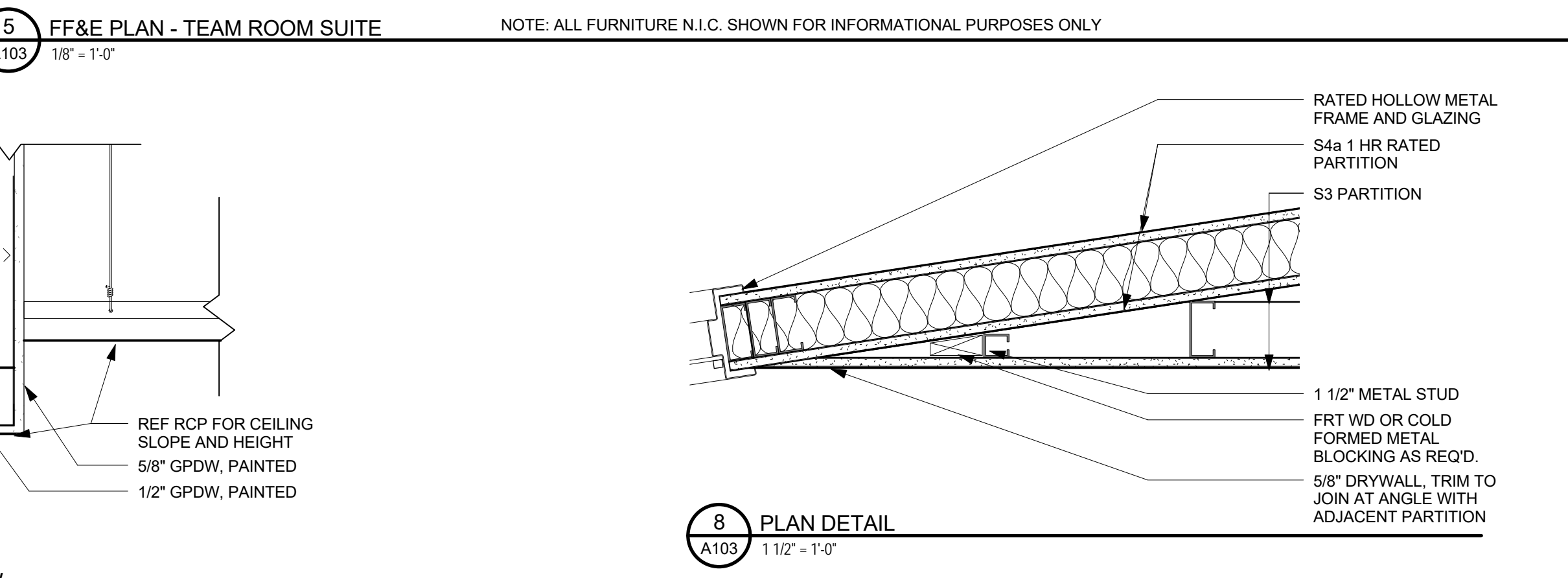
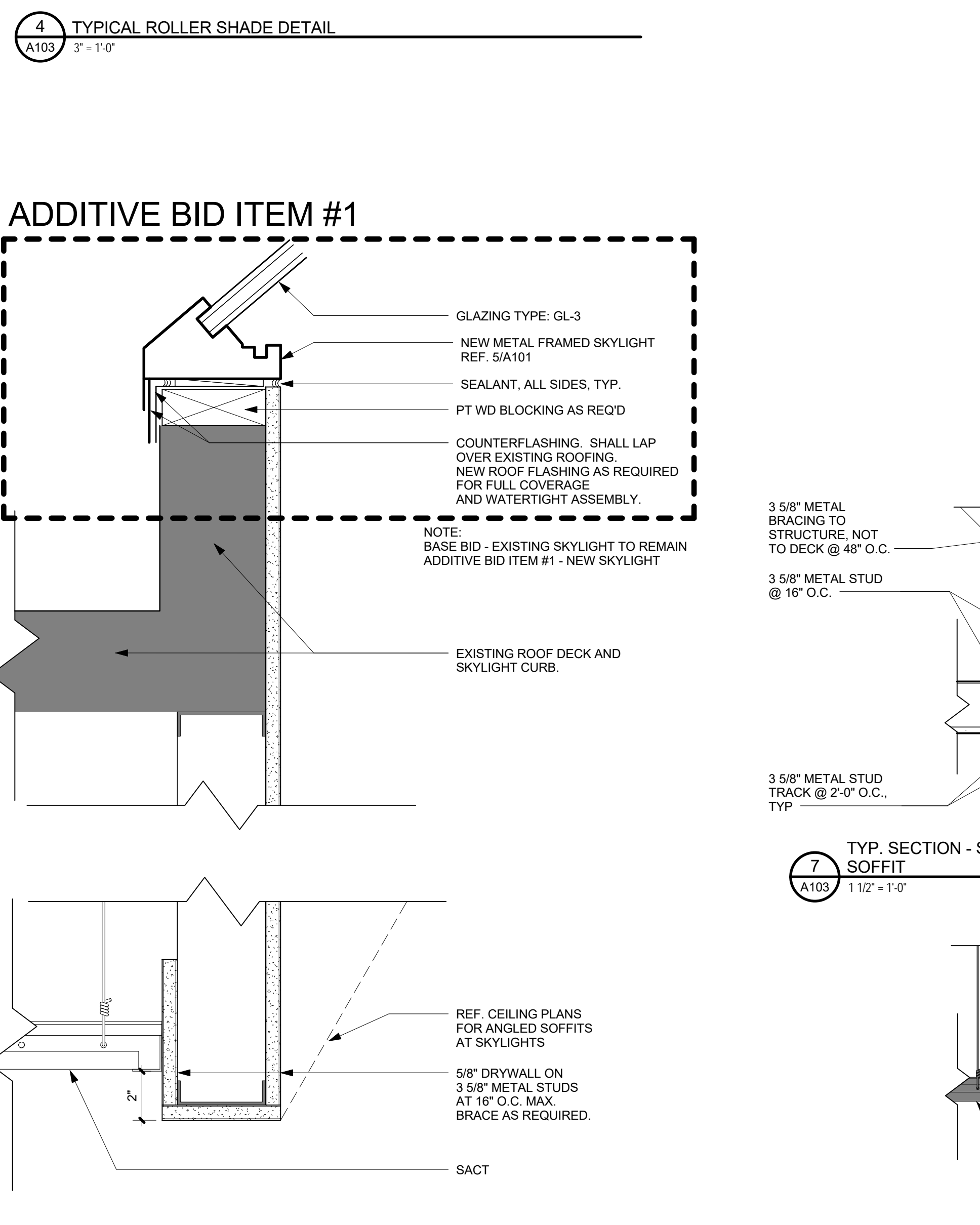
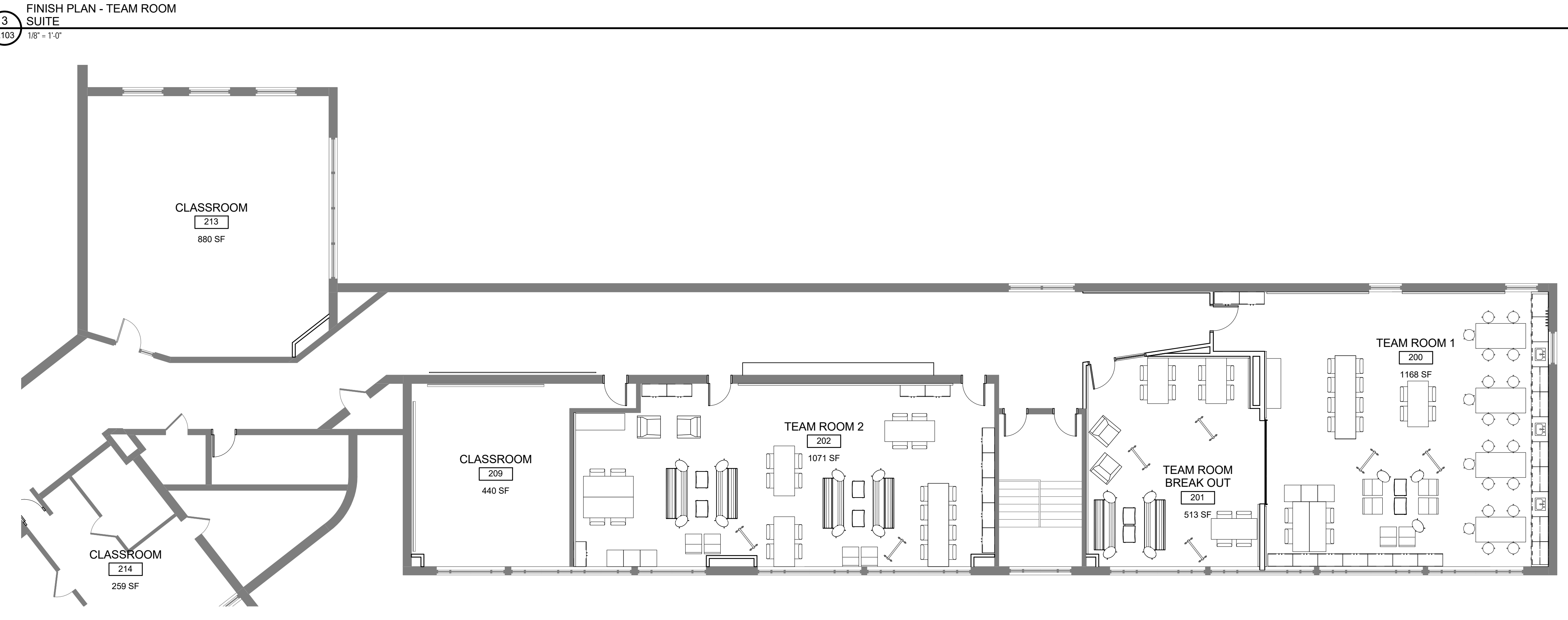
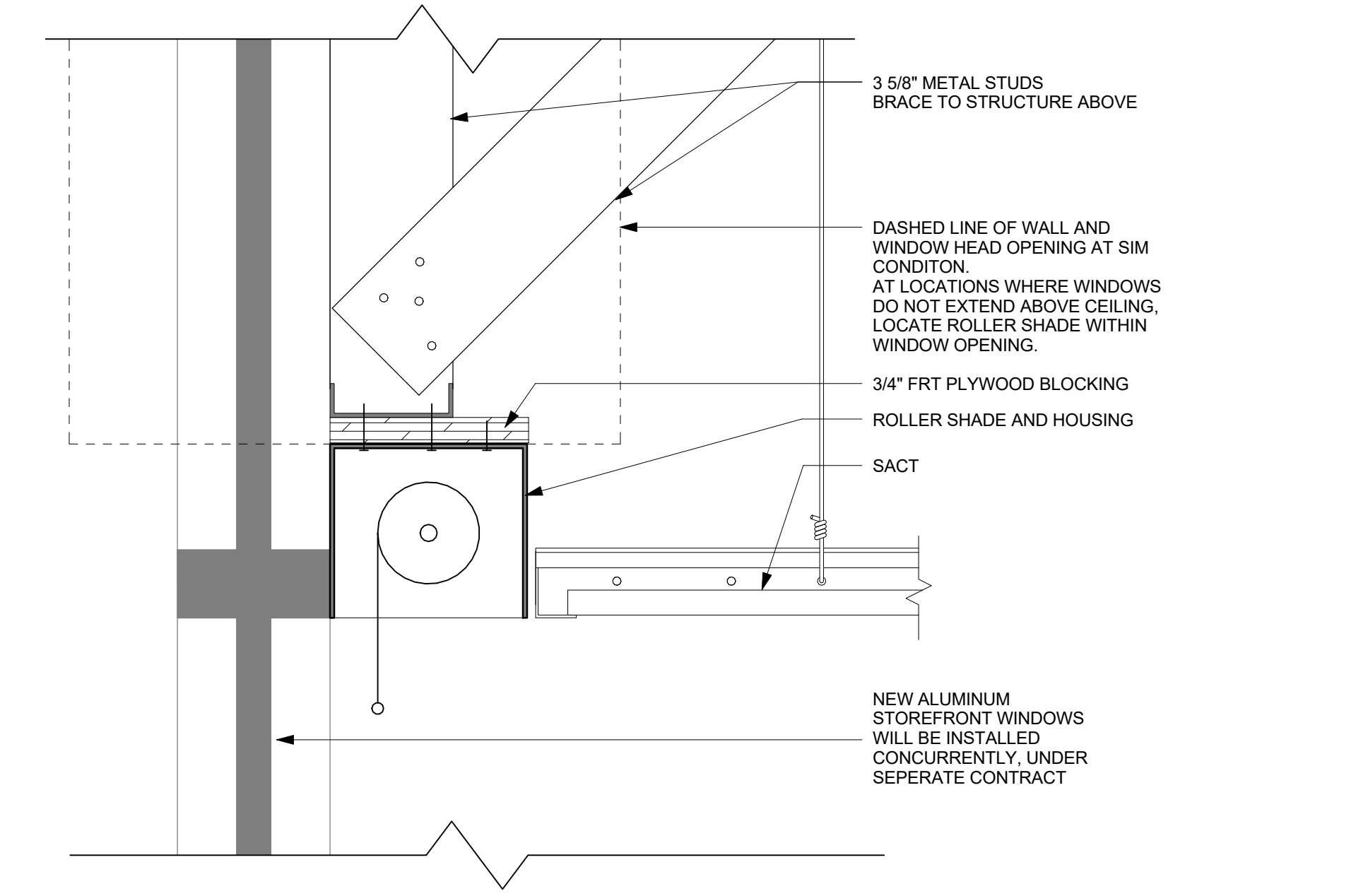
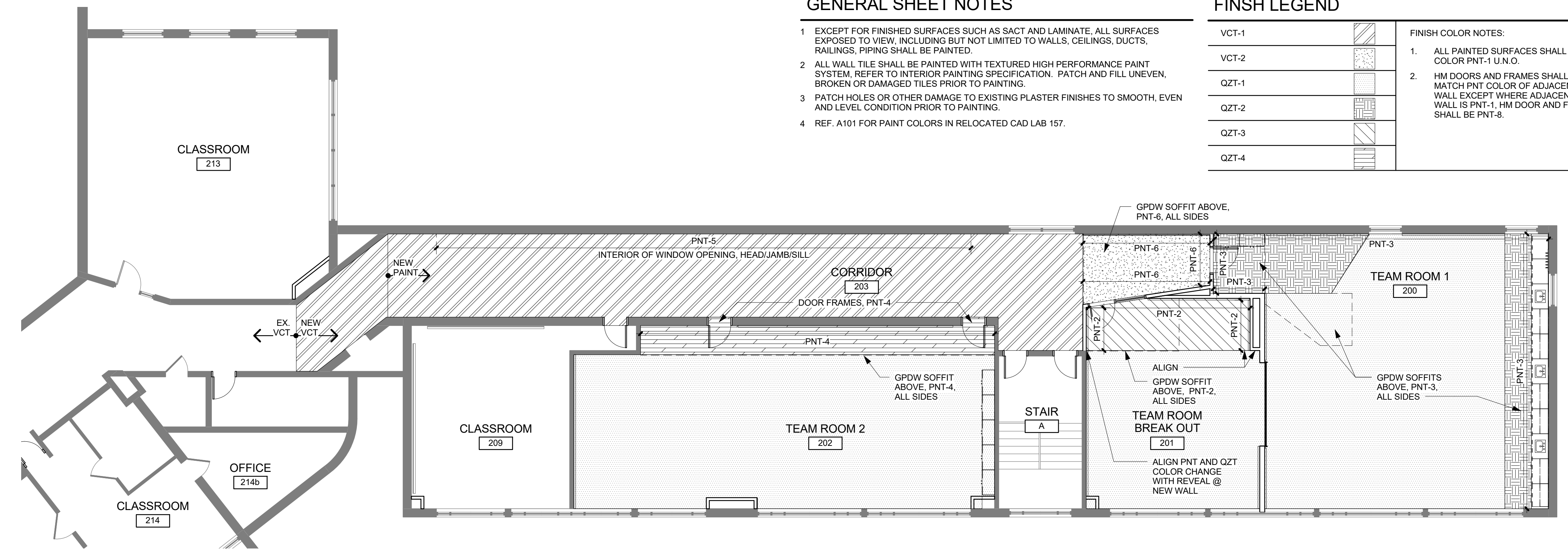
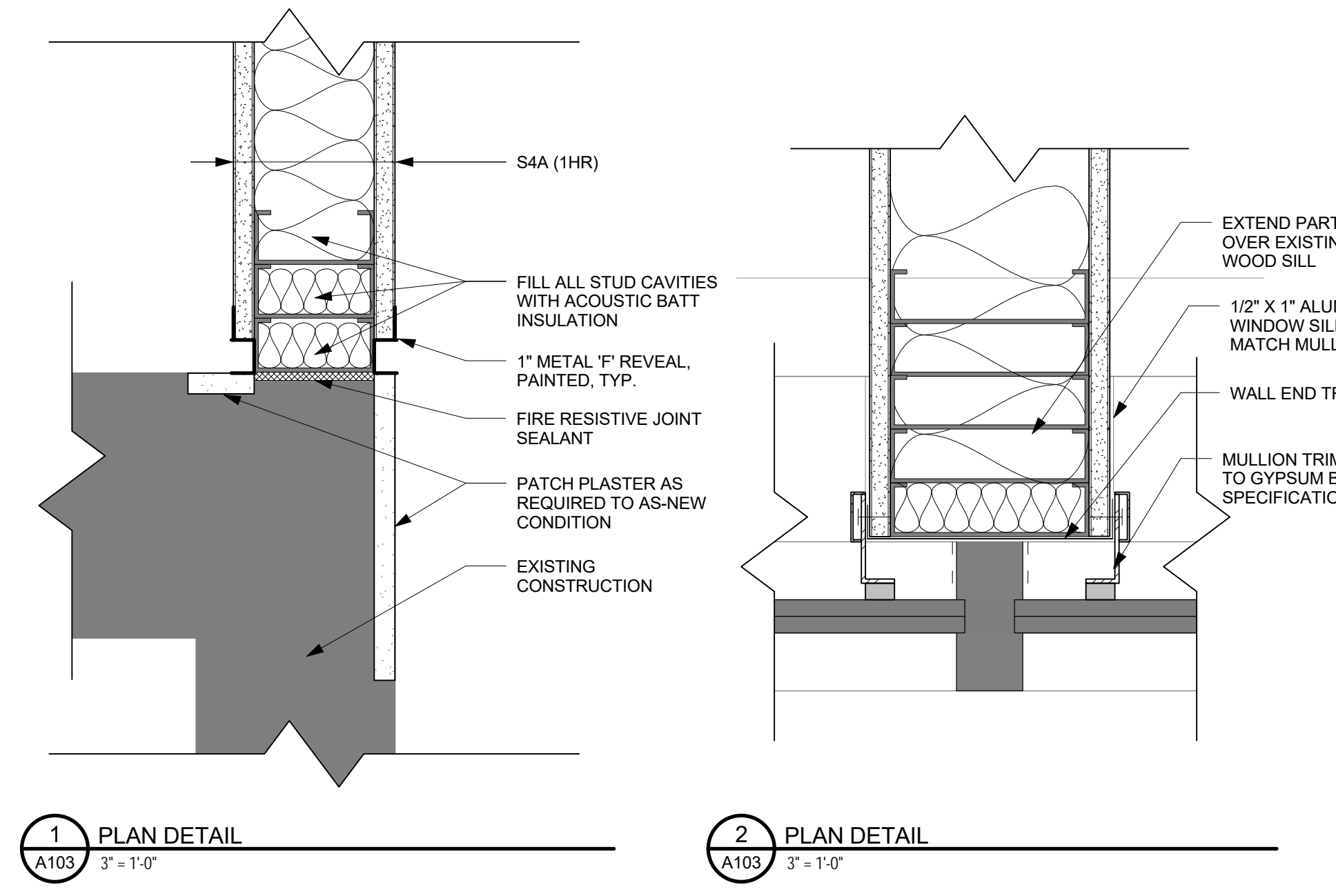


GENERAL SHEET NOTES

- EXCEPT FOR FINISHED SURFACES SUCH AS SACT AND LAMINATE, ALL SURFACES EXPOSED TO VIEW, INCLUDING BUT NOT LIMITED TO WALLS, CEILINGS, DUCTS, RAILINGS, PIPING SHALL BE PAINTED.
- ALL WALL TILE SHALL BE PAINTED WITH TEXTURED HIGH PERFORMANCE PAINT SYSTEM. REFER TO INTERIOR PAINTING SPECIFICATION. PATCH AND FILL UNEVEN, BROKEN OR DAMAGED TILES PRIOR TO PAINTING.
- PATCH HOLES OR OTHER DAMAGE TO EXISTING PLASTER FINISHES TO SMOOTH, EVEN AND LEVEL CONDITION PRIOR TO PAINTING.
- REF. A101 FOR PAINT COLORS IN RELOCATED CAD LAB 157.

FINISH LEGEND

VCT-1		FINISH COLOR NOTES: 1. ALL PAINTED SURFACES SHALL BE COLOR PNT-1 U.N.O. 2. HM DOORS AND FRAMES SHALL MATCH PNT COLOR OF ADJACENT WALL EXCEPT WHERE ADJACENT WALL IS PNT-1, HM DOOR AND FRAME SHALL BE PNT-8.
VCT-2		
QZT-1		
QZT-2		
QZT-3		
QZT-4		



**AHS MODERNIZATION/
HVAC UPGRADE**

ALBEMARLE COUNTY
PUBLIC SCHOOLS

2775 HYDRAULIC ROAD
CHARLOTTESVILLE, VA
22901

Material included herein is covered by copyright. Use of this work in whole or in part is forbidden without the expressed written consent of BCWH, Inc.

PROJECT NUMBER:
2016.40

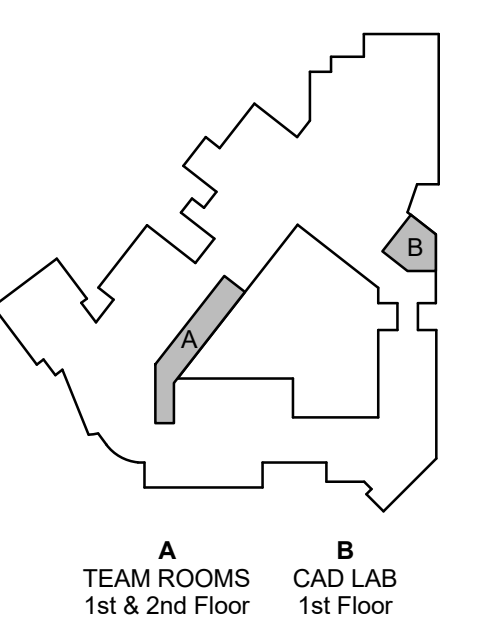
PROJECT MANAGER:
KS

DRAWN BY:
KS, ER, ZC

ISSUE DATE:
3/24/2017

BID DOCUMENTS

REVISIONS:



SHEET TITLE:
**NEW WORK - FINISH PLANS,
FF&E PLANS, DETAILS**

SHEET NUMBER:

A103