

architecture
incorporated

1902 campus commons drive
suite 101
reston, virginia 20191
Tel: 703.476.3900
Fax: 703.264.0733
www.archinc.com



4932 FRONTAGE ROAD NW
ROANOKE, VIRGINIA 24019
(540) 263-4444
D: JBB 16050 C: BCL

Construction Documents for:
ROCKINGHAM CO. PUBLIC SCHOOLS
JOHN WAYLAND ES
RENEWAL AND ADDITION
801 N. MAIN STREET,
BRIDGEWATER, VA 22812

Project: 16034-01

Issued 02-01-2017

BID SET

Revisions

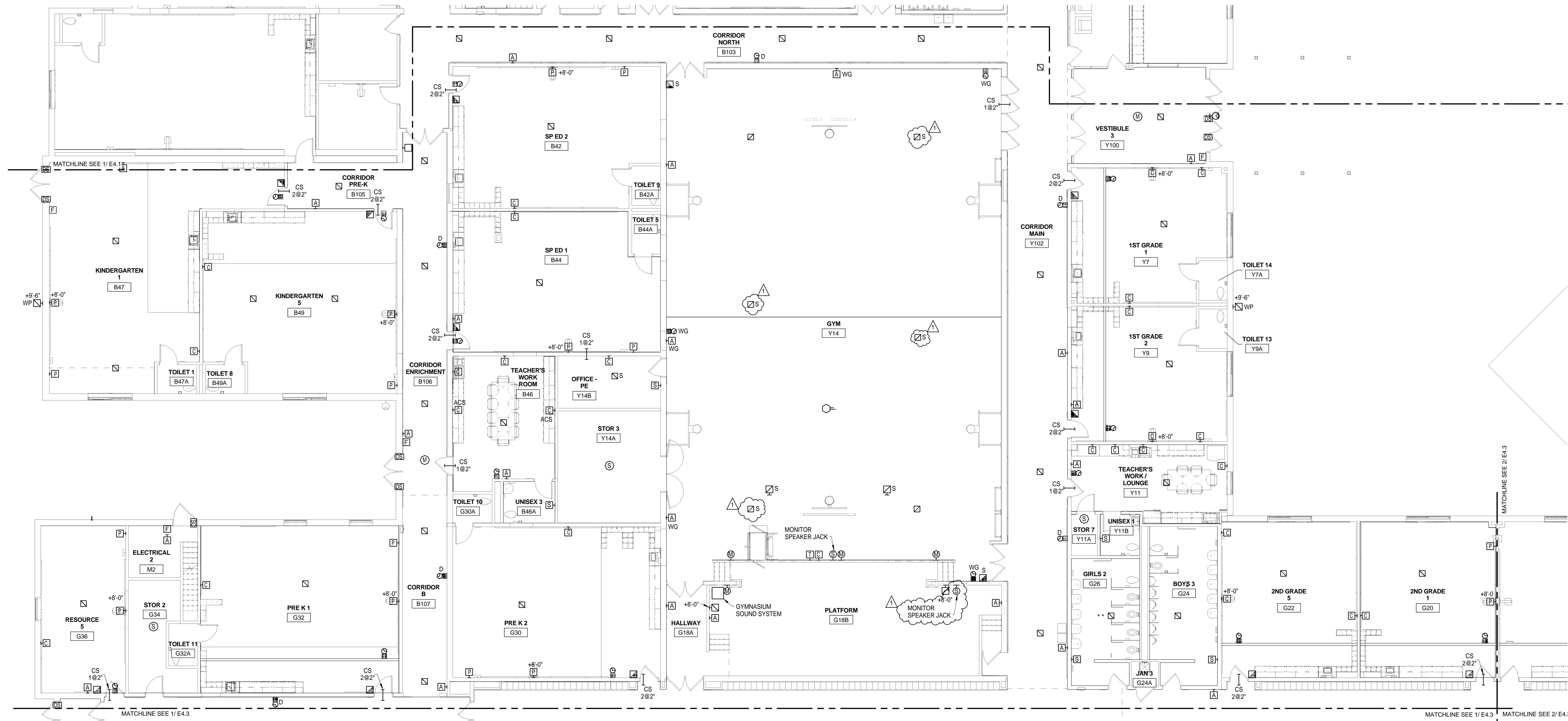
1 ADDENDUM 1 02/15/17

LEVEL 1
ELECTRICAL
LOW VOLTAGE
PLAN AREA B

Scale: As indicated
Drawn: Author
Checked: Checker

E4.2

BID SET



1 LEVEL 1 - ELECTRICAL LOW VOLTAGE PLAN - AREA B
1/8" = 1'-0"

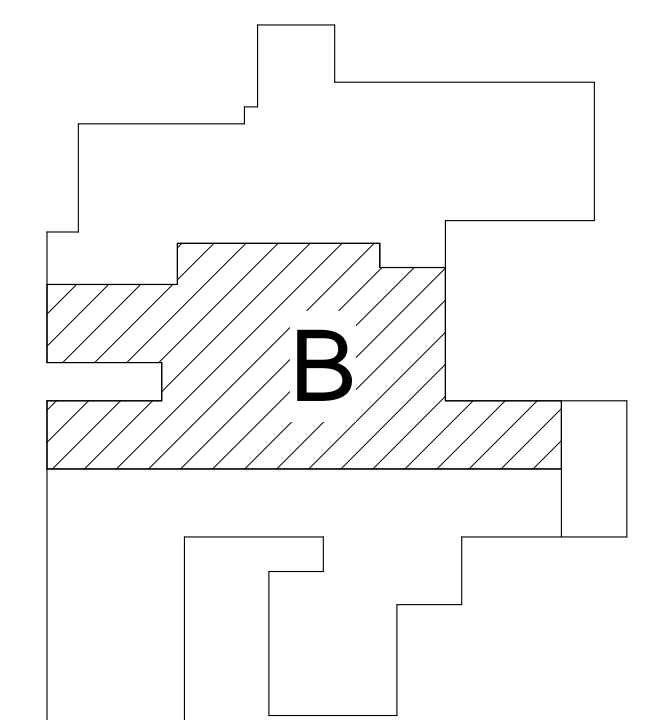
GENERAL NOTE:

1. ALL LOW VOLTAGE CABLES ABOVE CEILING USED FOR CONTROL AND DATA SIGNALING BETWEEN EQUIPMENT SUCH AS LED LIGHTING AND LOW VOLTAGE CONTROLS SHALL BE PLENUM RATED AND SECURED FROM STRUCTURE WITH WIRE HANGERS ON 4'-0" CENTERS AND TIED TO HOOKS WITH PLENUM RATED TIE-WRAPPS.

ASBESTOS NOTE
AN ASBESTOS INSPECTION WAS PERFORMED AND ASBESTOS-CONTAINING MATERIALS WERE FOUND. THE ASBESTOS SURVEY/INSPECTION REPORT IS AVAILABLE TO THE CONTRACTOR(S) FOR HIS INFORMATION. THE ASBESTOS-CONTAINING MATERIALS SHALL BE REMOVED BY THE OWNER PRIOR TO ANY OTHER WORK BEING PERFORMED IN THESE AREAS. IF ASBESTOS IS ENCOUNTERED, STOP WORK IMMEDIATELY AND NOTIFY THE OWNER.

THESE DRAWINGS ARE BASED ON HISTORICAL DRAWINGS OF THE EXISTING BUILDING. CONTRACTOR SHALL VERIFY ALL CONDITIONS PRIOR TO THE FABRICATION OF SYSTEM. MODIFICATIONS SHALL BE MADE ONLY AFTER APPROVAL BY THE ENGINEER.

KEY PLAN



GRAPHIC SCALE

