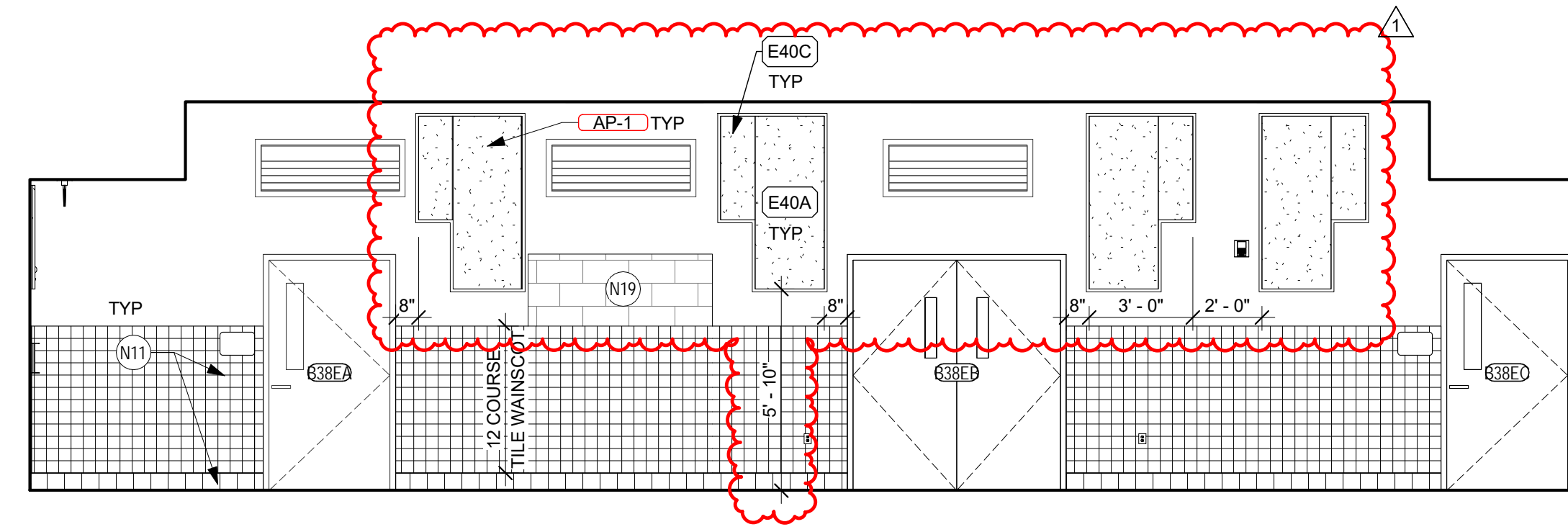
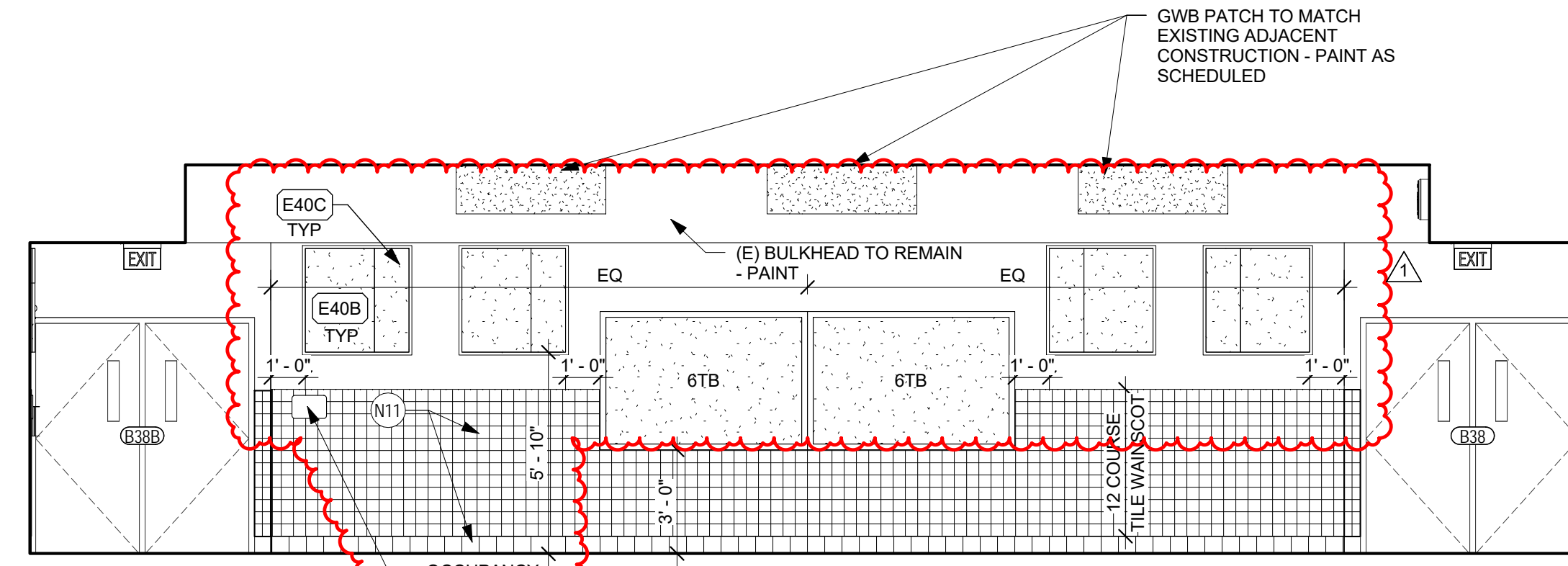


INTERIOR ELEVATION NOTES:

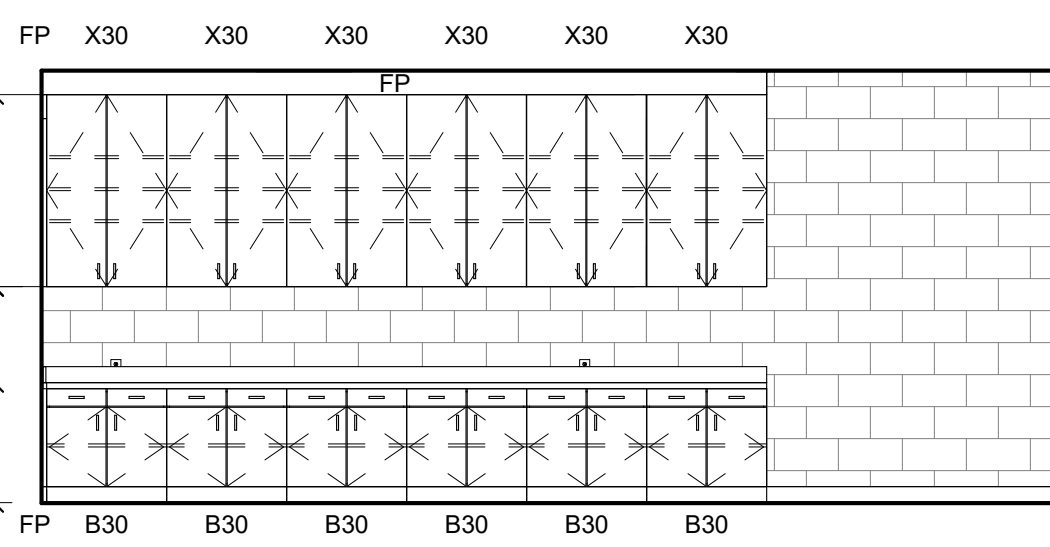
1. SEE SHEET A6.1 FOR EQUIPMENT SCHEDULE AND KEYED WORK NOTES FOR THIS SHEET.
2. REFER TO SHEET F0.1 FOR FINISH SCHEDULE AND MATERIALS
3. REFER TO SHEET F2.2 FOR TILE PATTERNS
4. REFER TO SHEET F3.1 FOR FINISH DETAILS



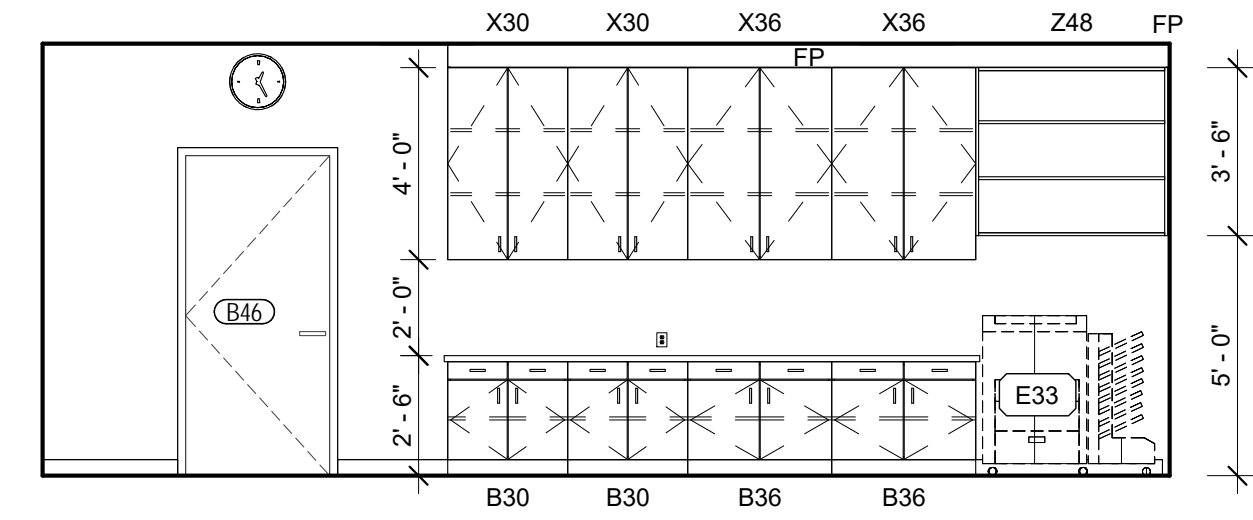
1 CAFETERIA 1
1/4" = 1'-0"



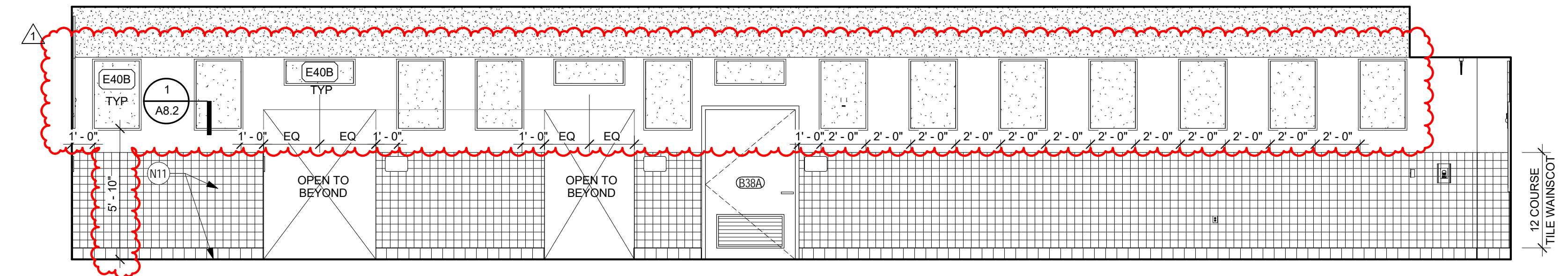
3 CAFETERIA 3
1/4" = 1'-0"



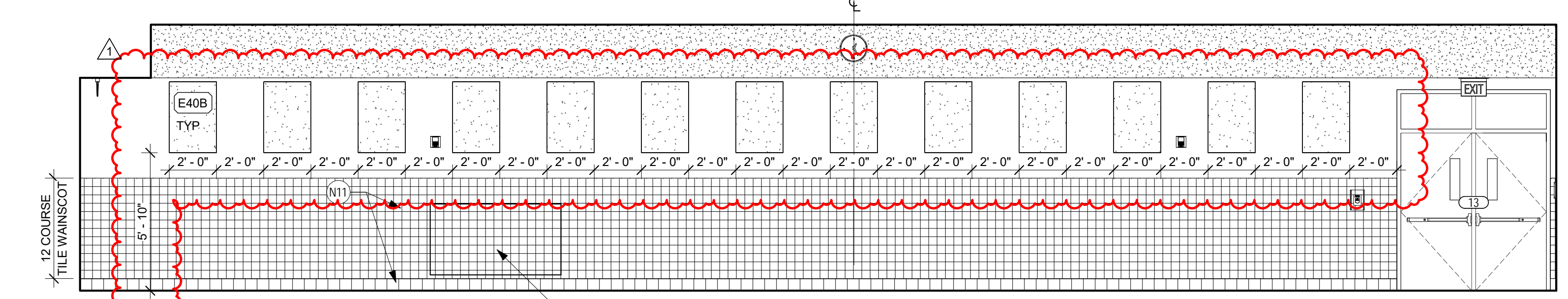
5 TEACHER WORK ROOM 1
1/4" = 1'-0"



6 TEACHER WORK ROOM 2
1/4" = 1'-0"



2 CAFETERIA 2
1/4" = 1'-0"



4 CAFETERIA 4
1/4" = 1'-0"



architecture
incorporated

1902 campus commons drive
suite 101
reston, virginia 20191
Tel: 703.476.3900
Fax: 703.264.0733
www.archinc.com

Construction Documents for:
ROCKINGHAM CO. PUBLIC SCHOOLS
JOHN WAYLAND ES
RENOVATION AND ADDITION
801 N. MAIN STREET,
BRIDGEWATER, VA 22812

Project: 16034-01

Issued 02-01-2017

BID SET

Revisions

1 ADDENDUM 1 02/15/17

INTERIOR ELEVATIONS

Scale: **As indicated**
Drawn: KBEL4
Checked: CRS

A7.5

BID SET