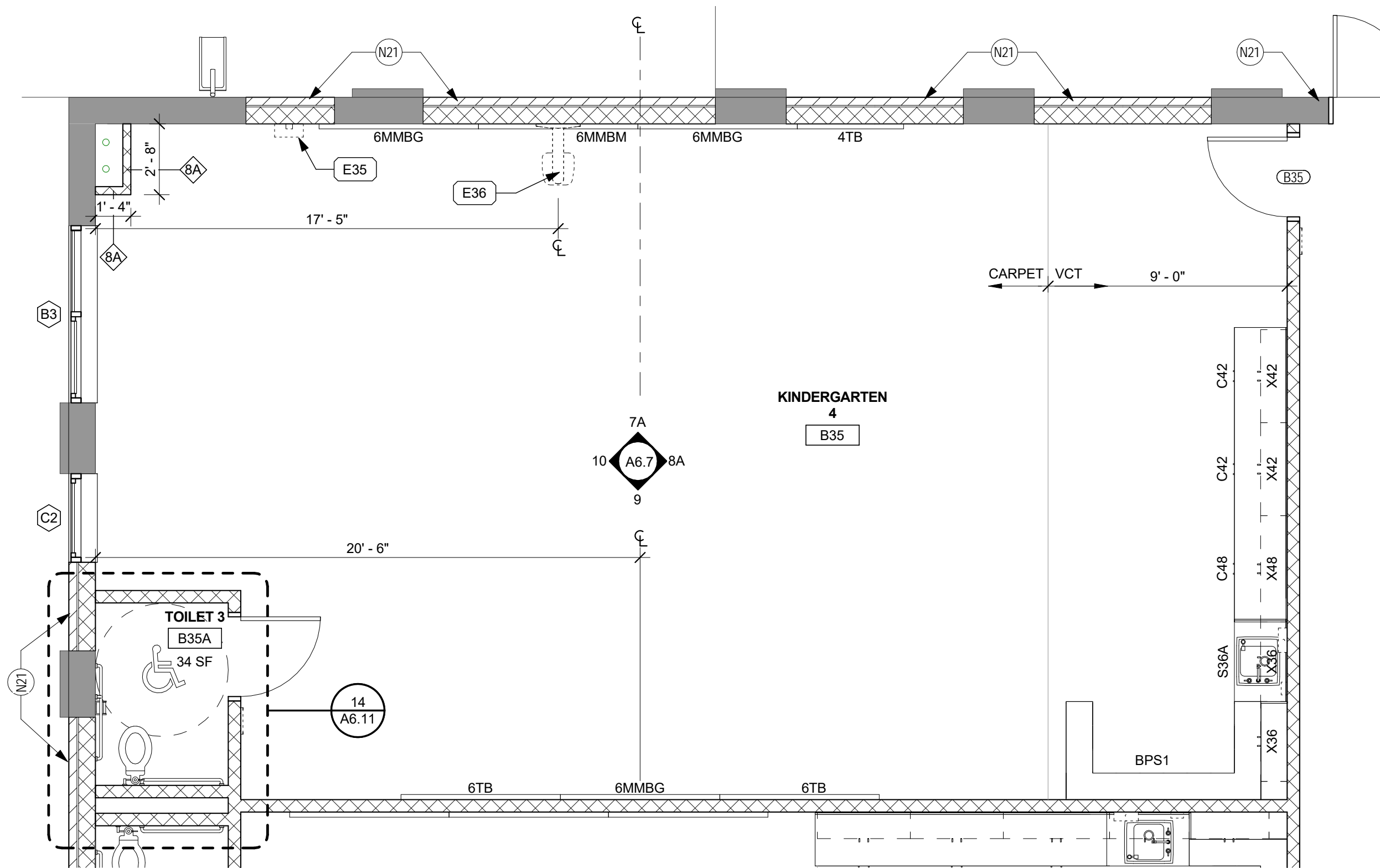
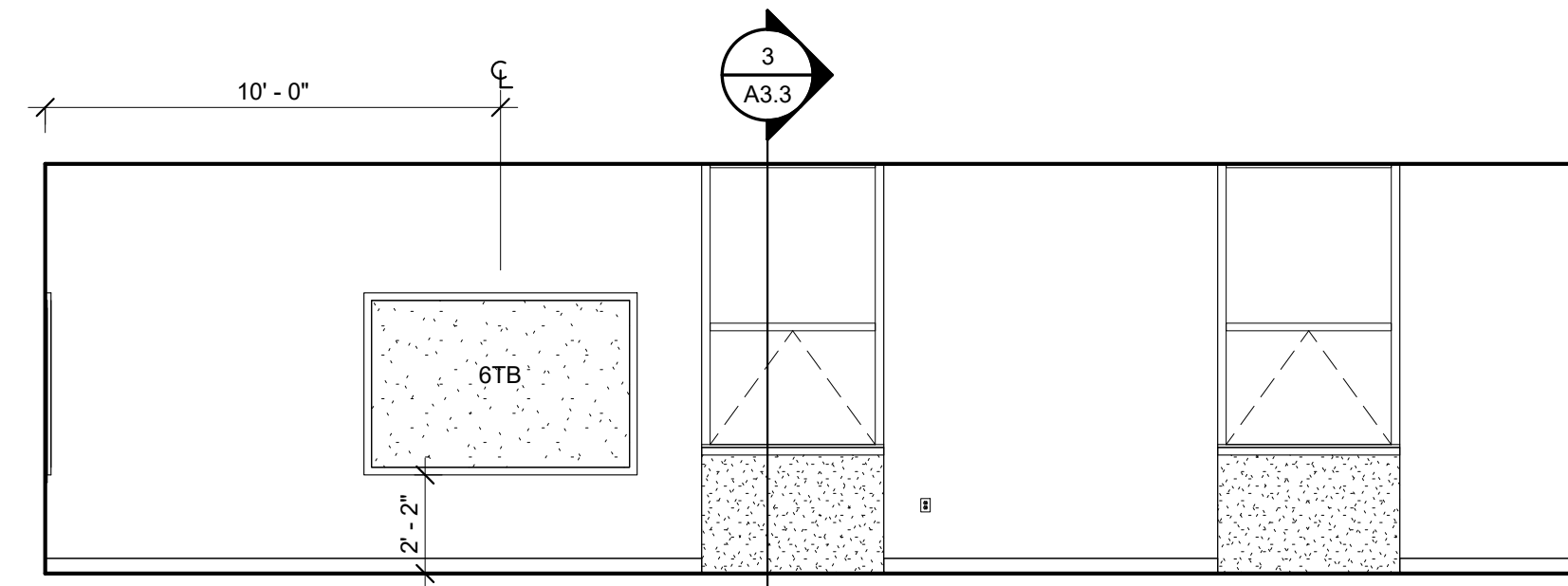


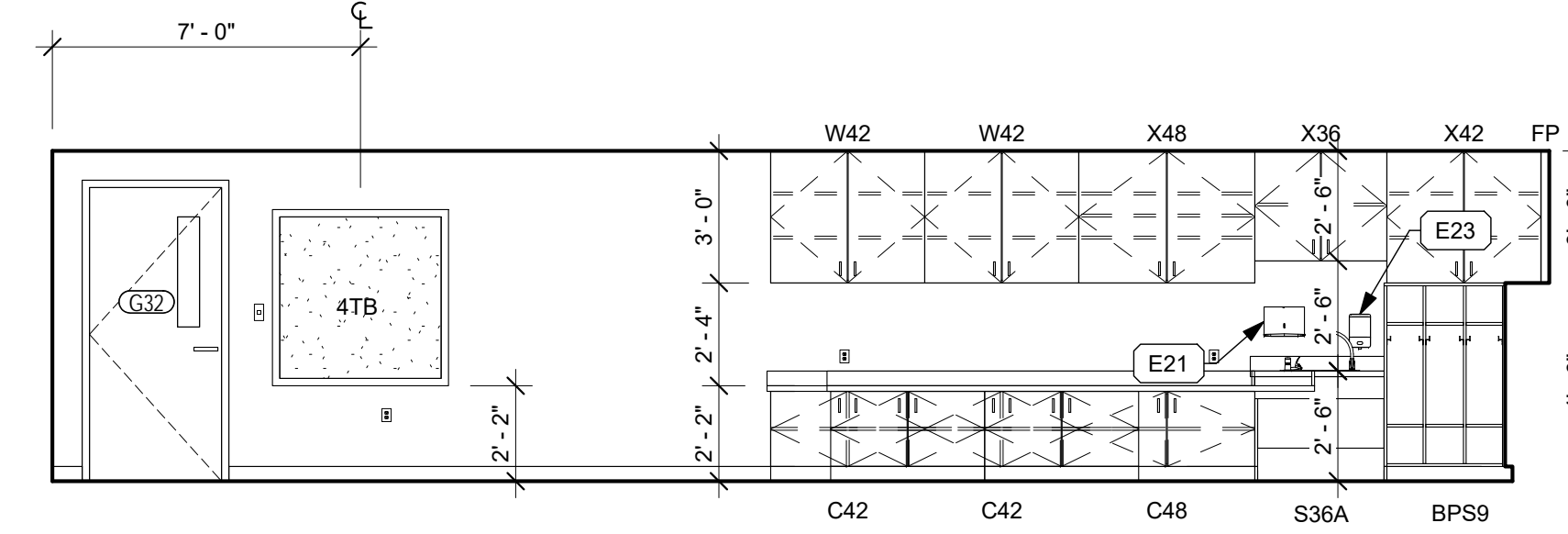
1 CLASSROOM - PRE K CLASSROOM
1/4" = 1'-0"



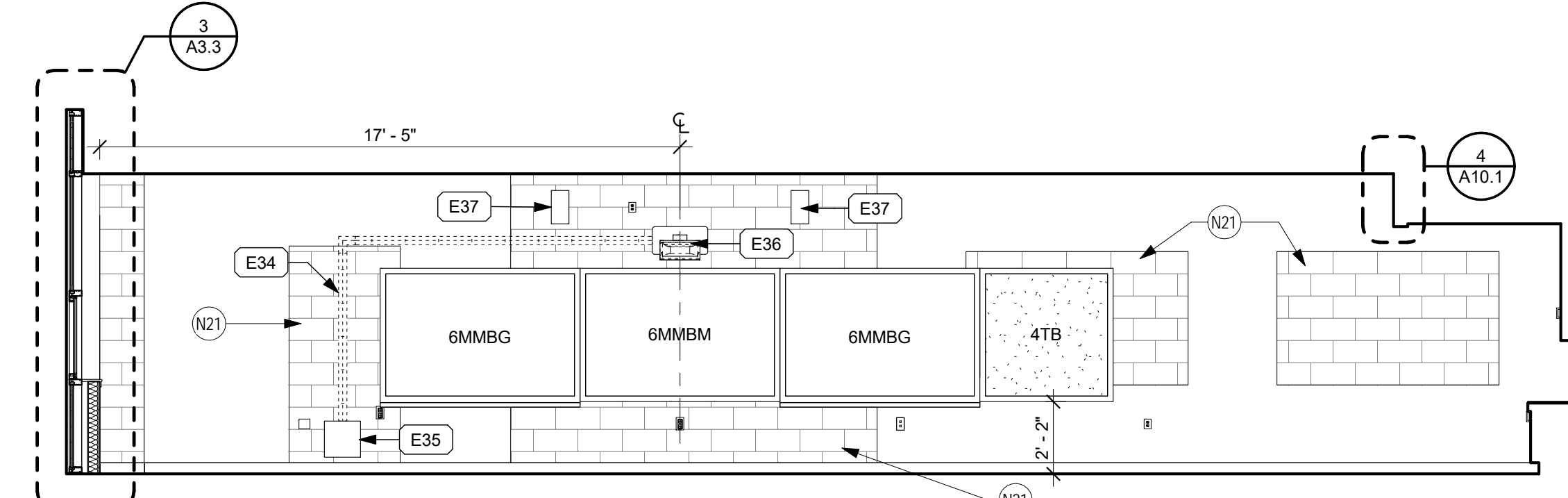
6 CLASSROOM - KINDERGARTEN
1/4" = 1'-0"



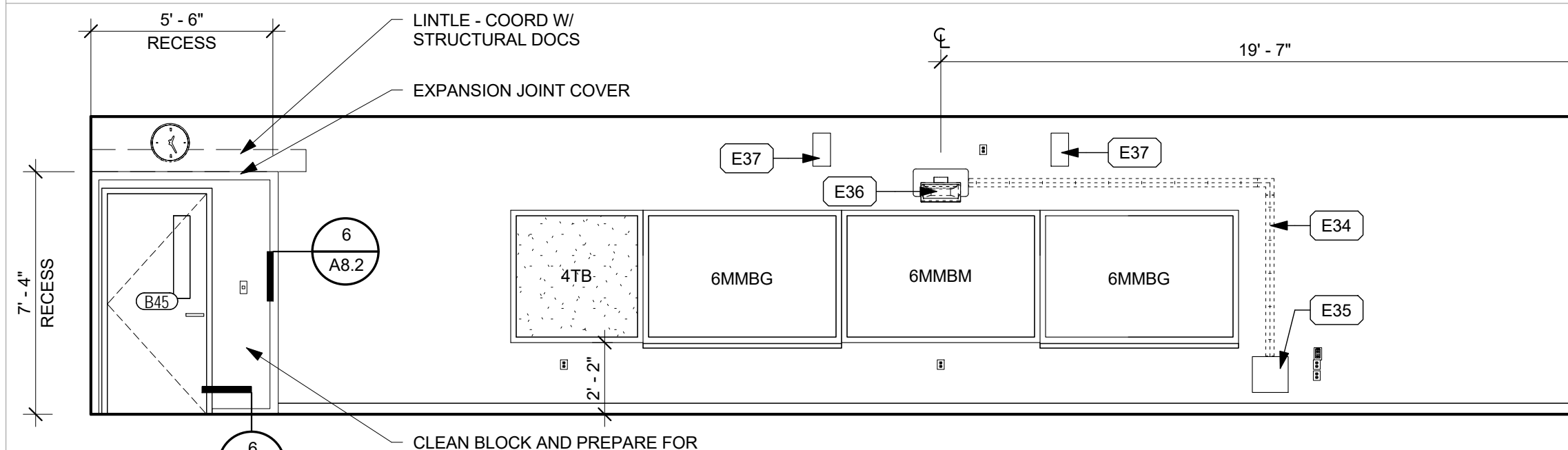
2 PRE-K
1/4" = 1'-0"



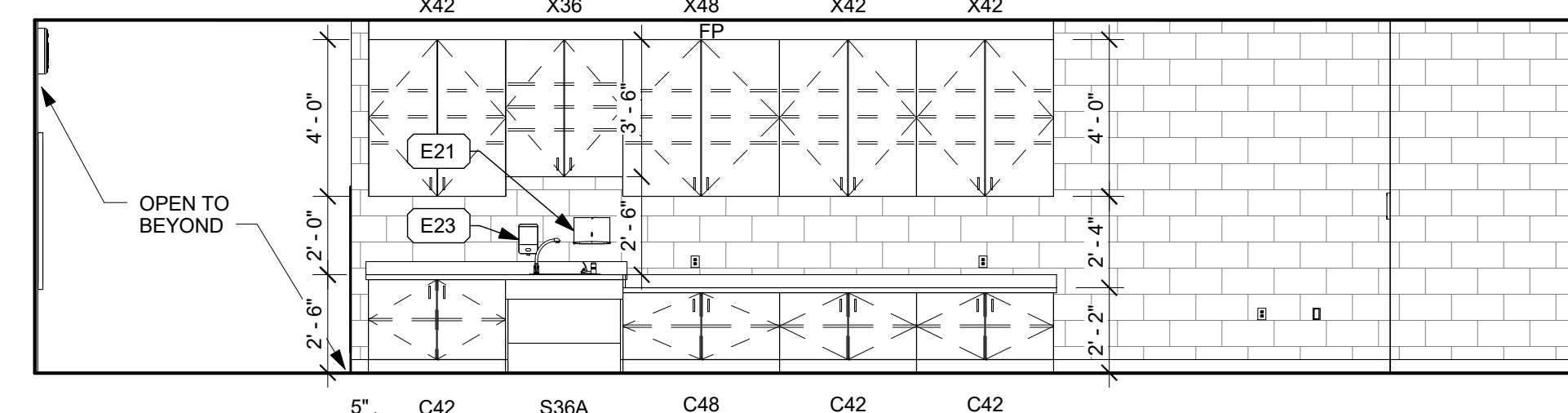
4 PRE-K WET WALL
1/4" = 1'-0"



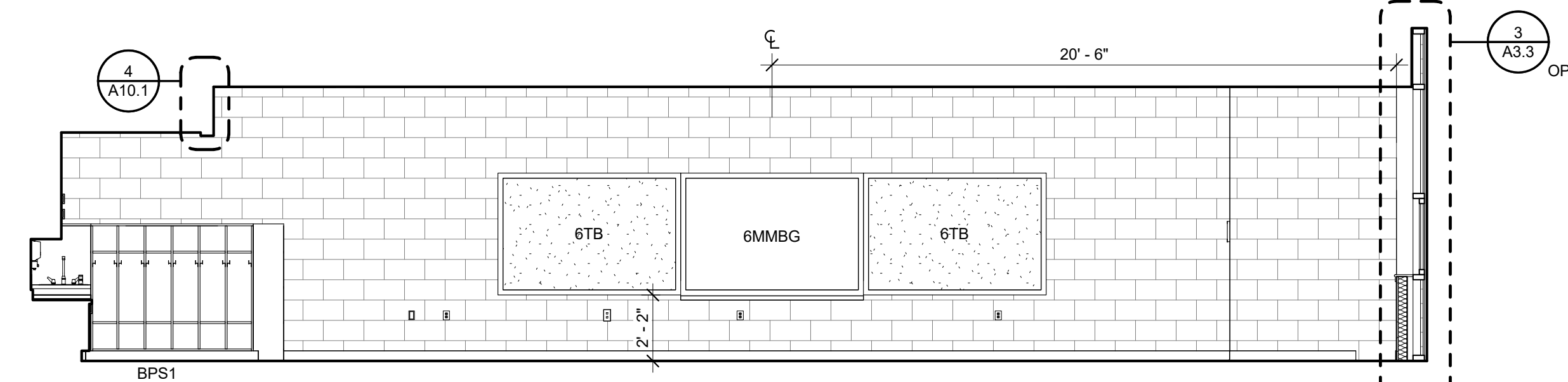
7A KINDERGARTEN MAIN TEACHING WALL
1/4" = 1'-0"



7B KINDERGARTEN (MAIN TEACHING WALL)
1/4" = 1'-0"



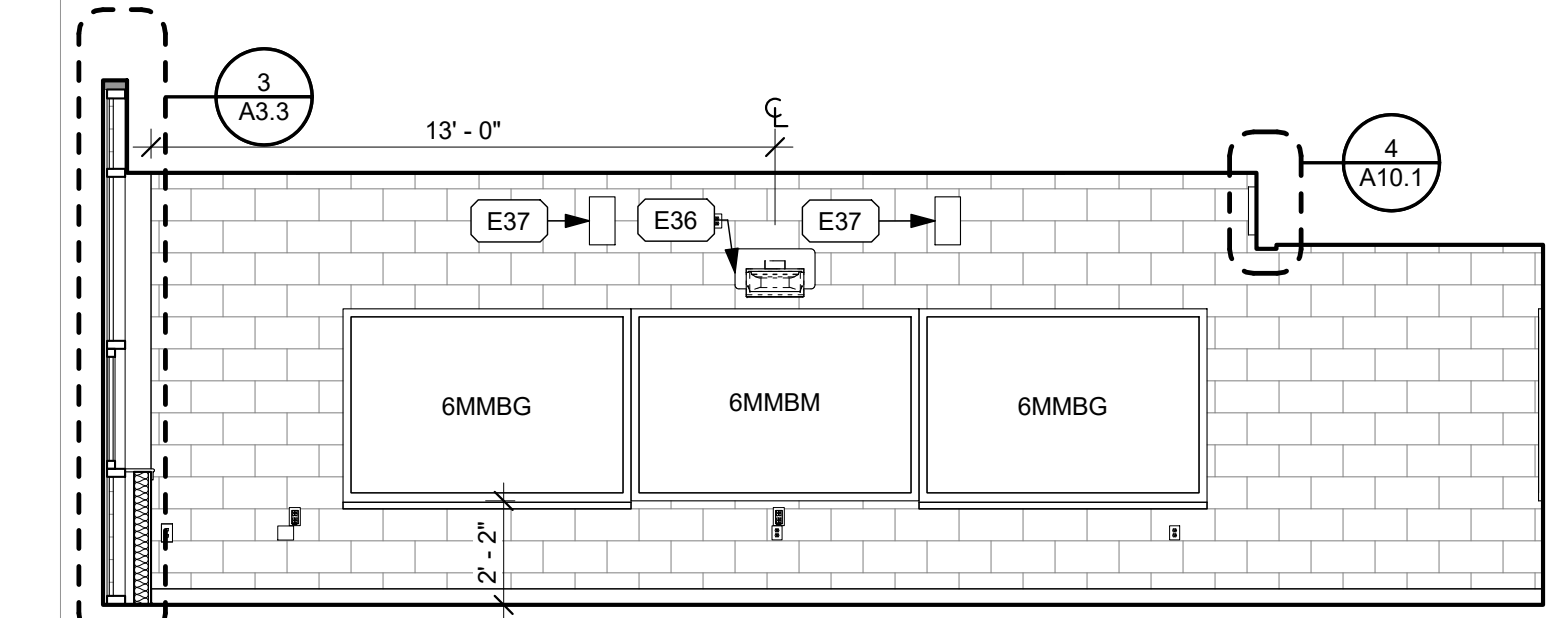
8C KINDERGARTEN
1/4" = 1'-0"



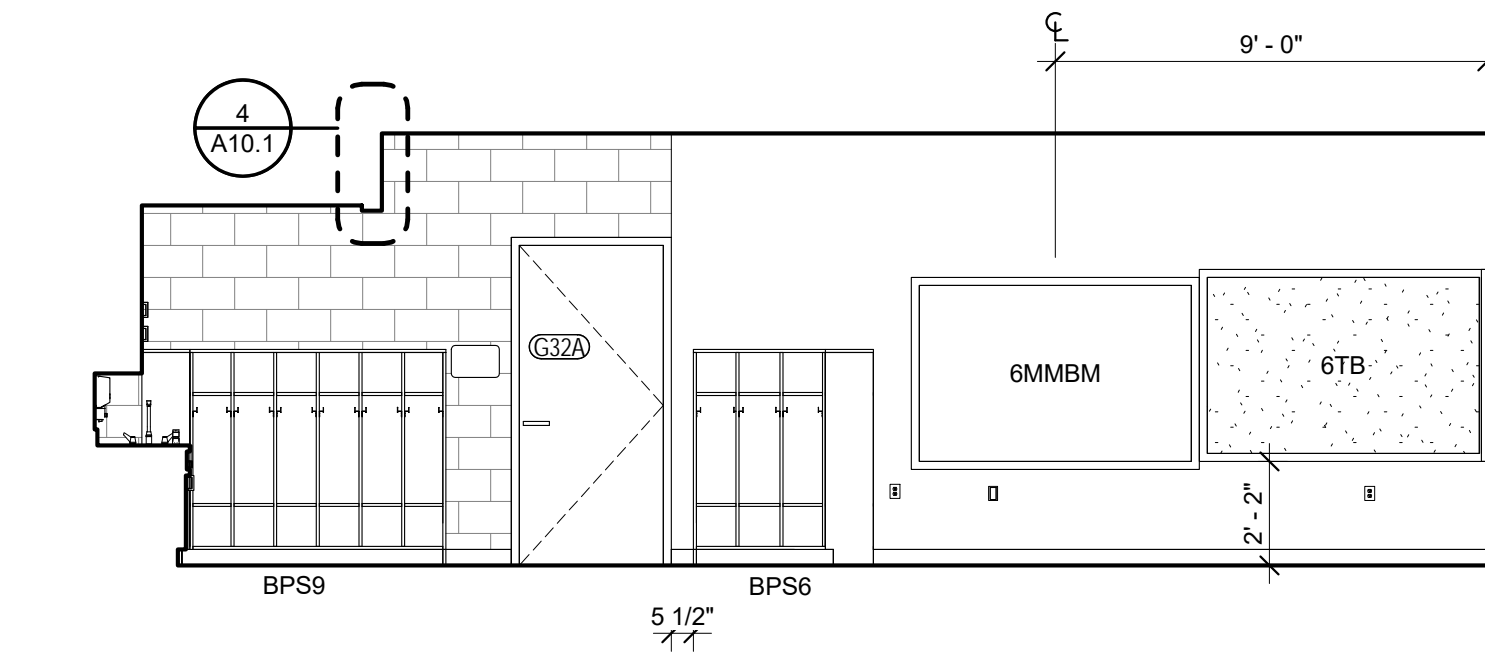
9 KINDERGARTEN SECONDARY TEACHING WALL
1/4" = 1'-0"

INTERIOR ELEVATION NOTES:

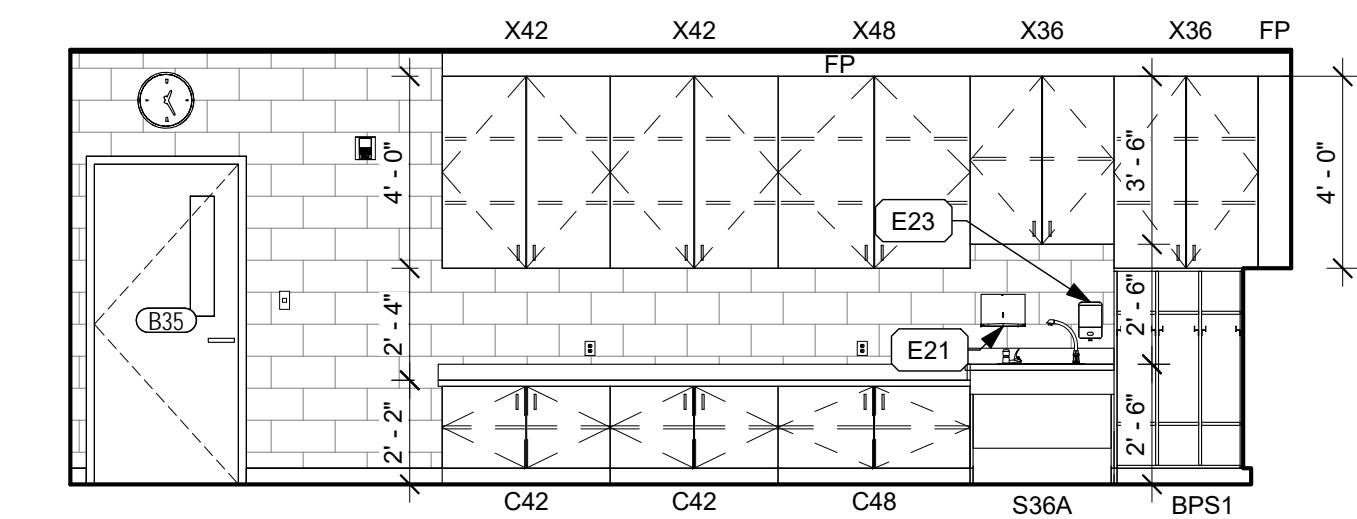
1. SEE SHEET A6.1 FOR EQUIPMENT SCHEDULE AND KEYED WORK NOTES FOR THIS SHEET.
2. REFER TO SHEET F0.1 FOR FINISH SCHEDULE AND MATERIALS
3. REFER TO SHEET F2.2 FOR TILE PATTERNS
4. REFER TO SHEET F3.1 FOR FINISH DETAILS



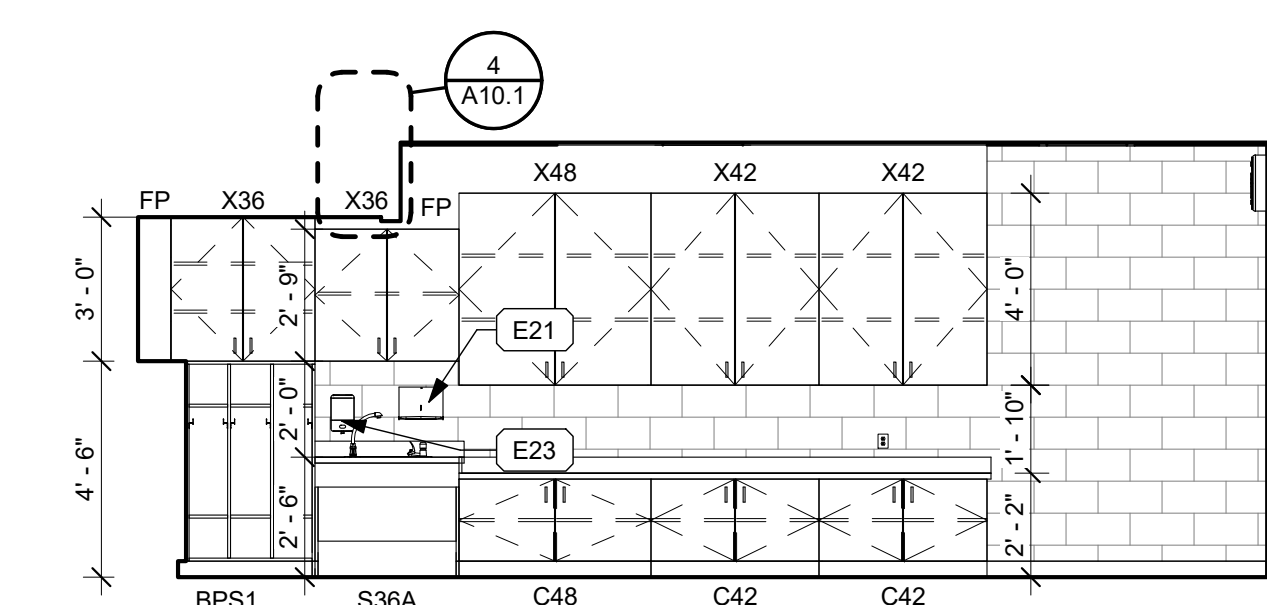
3 PRE-K MAIN TEACHING WALL
1/4" = 1'-0"



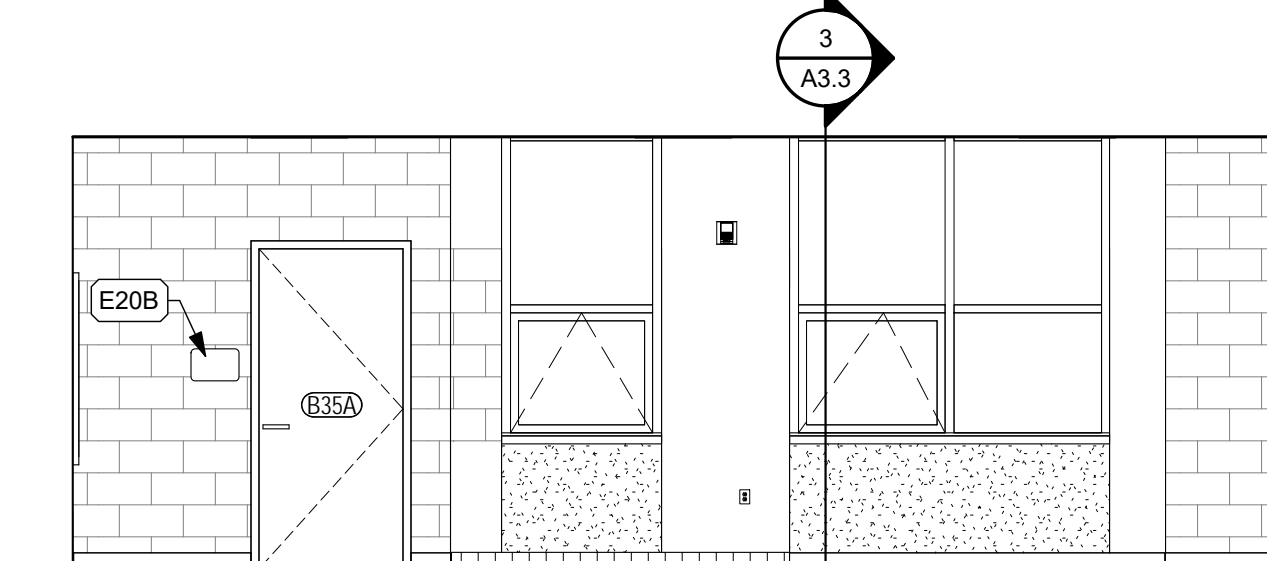
5 PRE-K SECONDARY TEACHING WALL
1/4" = 1'-0"



8A KINDERGARTEN WET WALL
1/4" = 1'-0"



8B KINDERGARTEN WET WALL
1/4" = 1'-0"



10 KINDERGARTEN
1/4" = 1'-0"



architecture
incorporated

1902 campus commons drive
suite 101
reston, virginia 20191
Tel: 703.476.3900
Fax: 703.264.0733
www.archinc.com

Construction Documents for:
ROCKINGHAM CO. PUBLIC SCHOOLS
JOHN WAYLAND ES
RENOVATION AND ADDITION
801 N. MAIN STREET,
BRIDGEWATER, VA 22812

Project: 16034-01

Issued 02-01-2017

BID SET

Revisions

1 ADDENDUM 1 02/15/17

ENLARGED
CLASSROOM
PLANS - PK &
KG

Scale: As indicated
Drawn: KBEL4
Checked: CRS

A6.7

BID SET