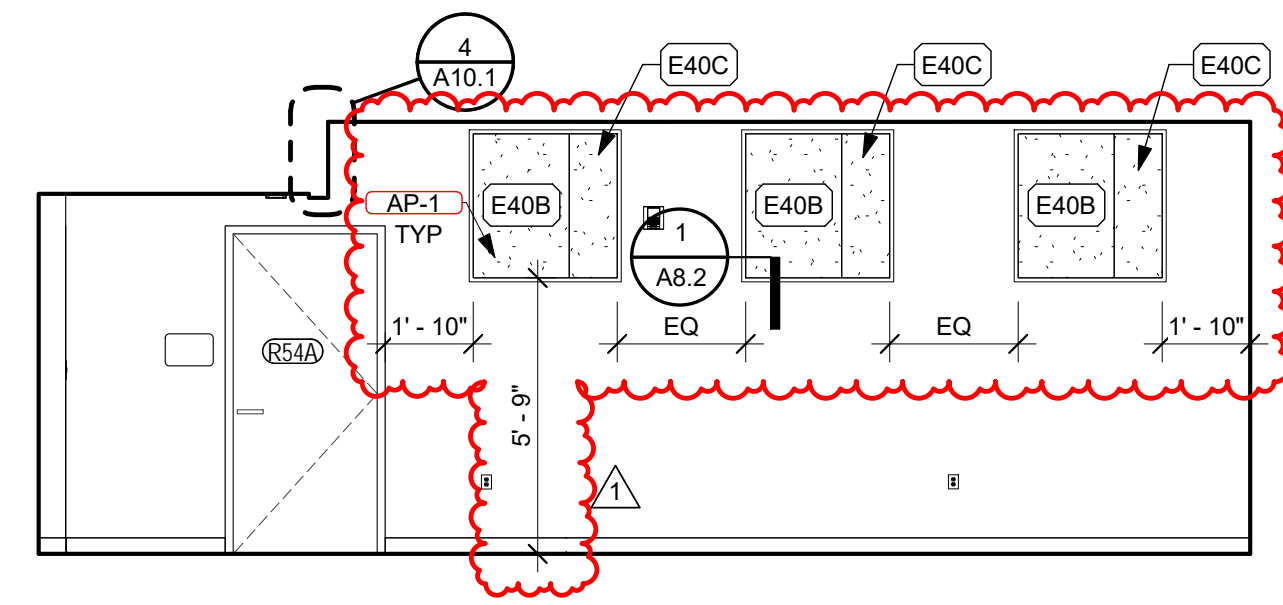
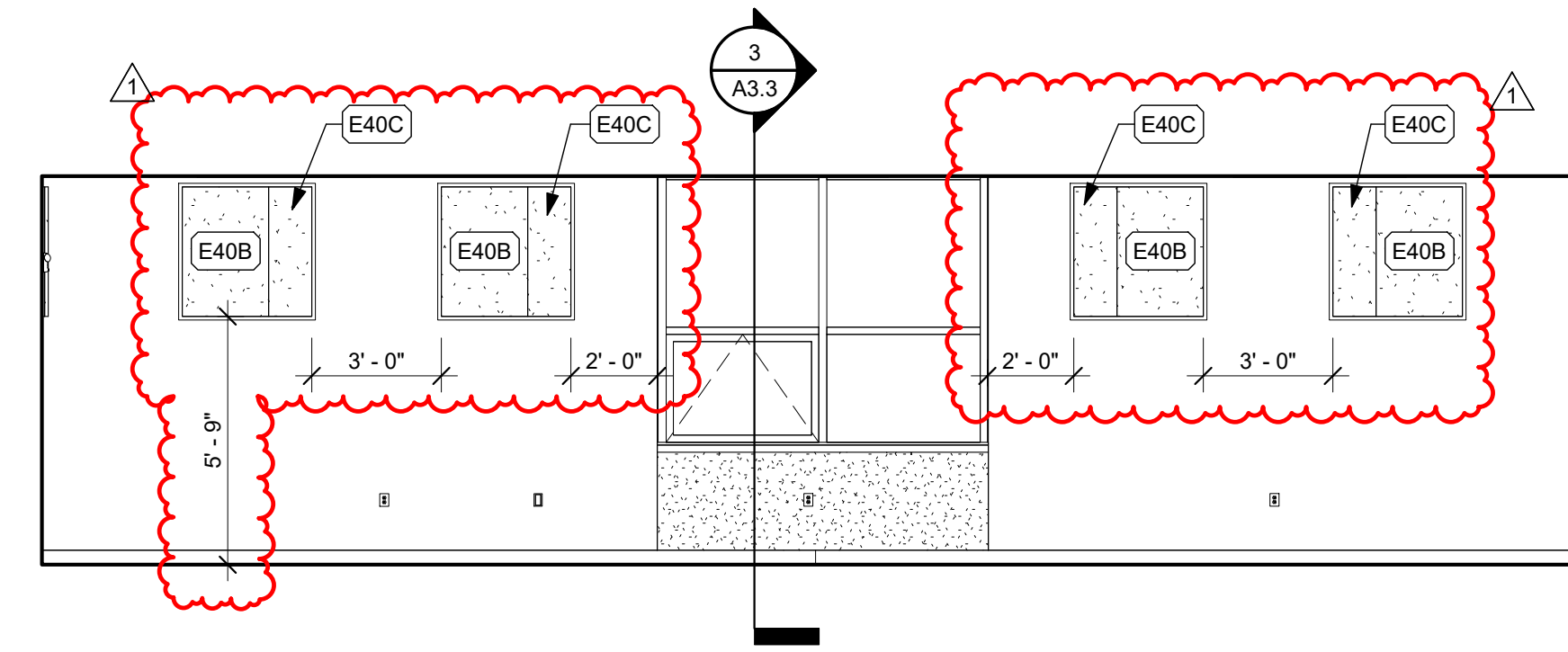


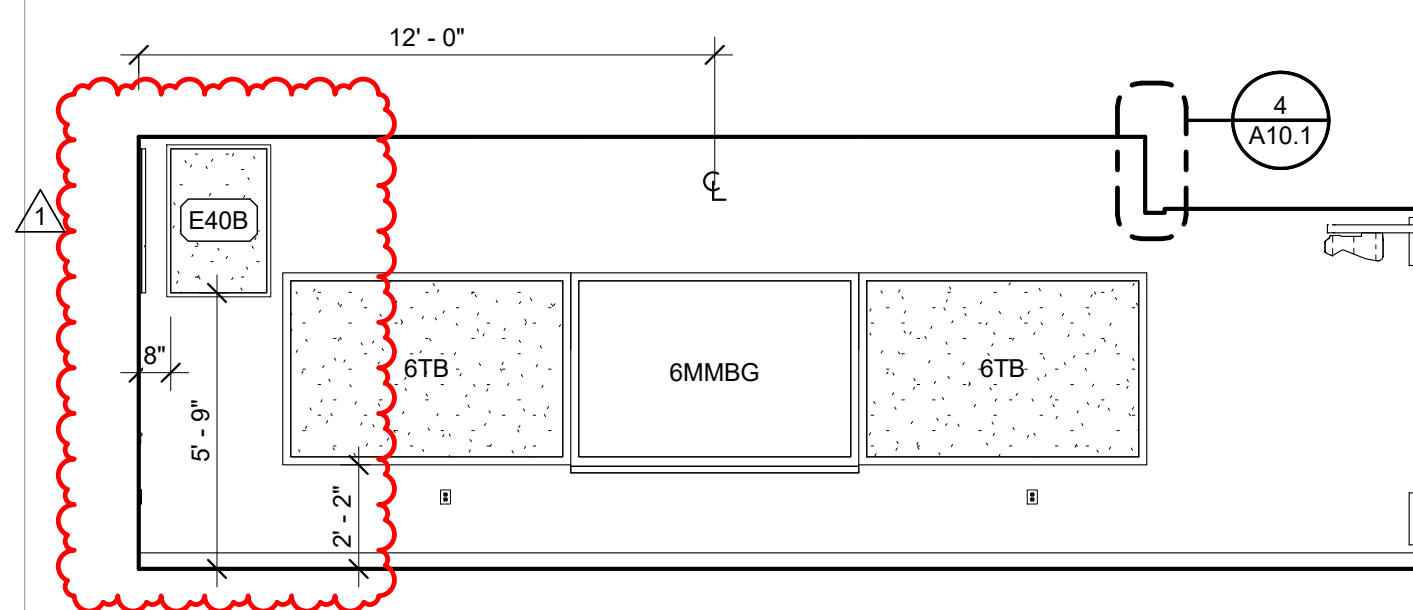
**1 MUSIC**  
1/4" = 1'-0"



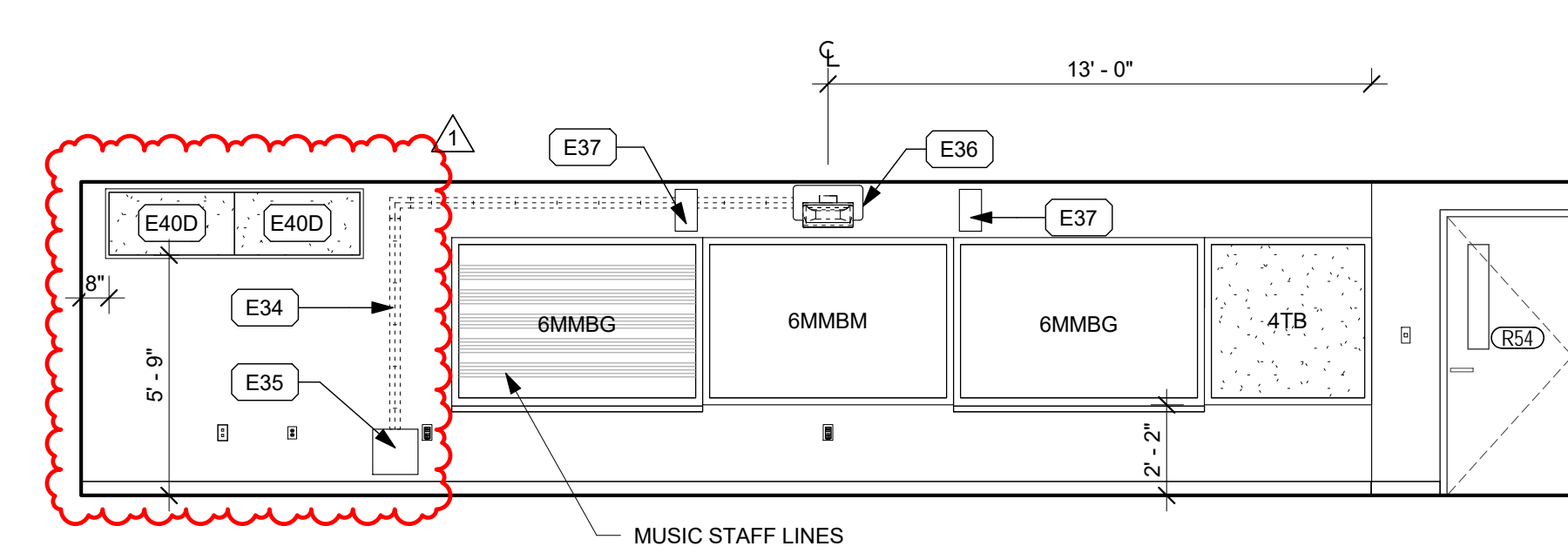
**2 MUSIC 1**  
1/4" = 1'-0"



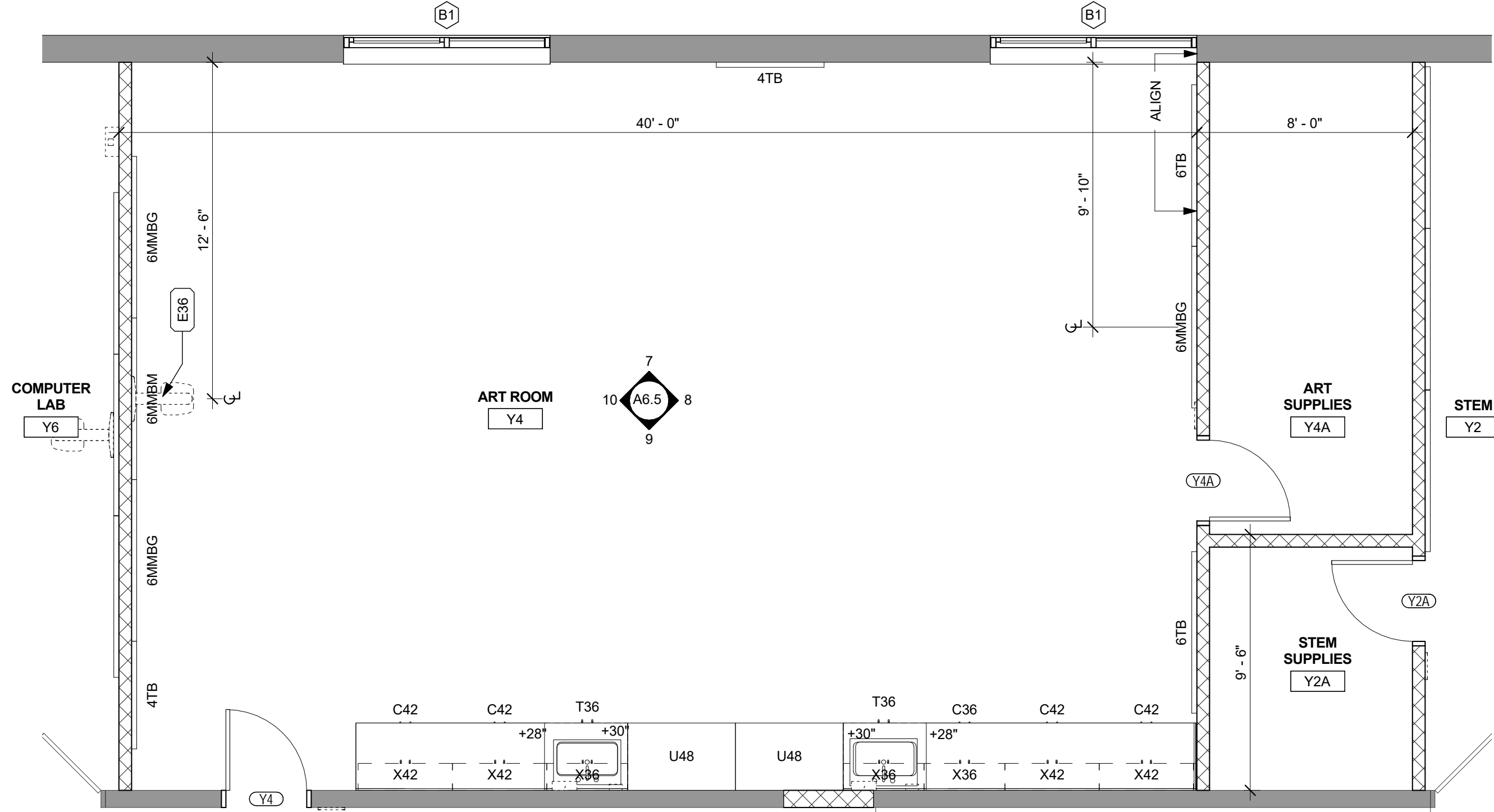
**3 MUSIC 2**  
1/4" = 1'-0"



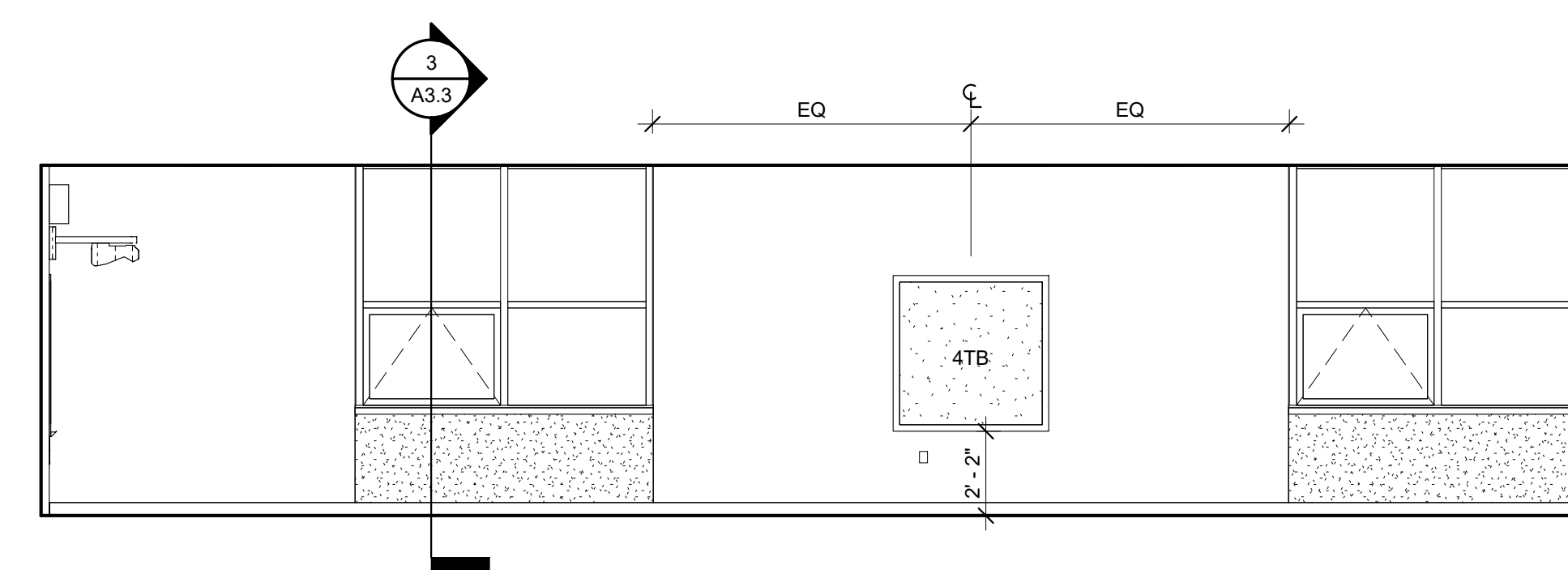
**4 MUSIC 3**  
1/4" = 1'-0"



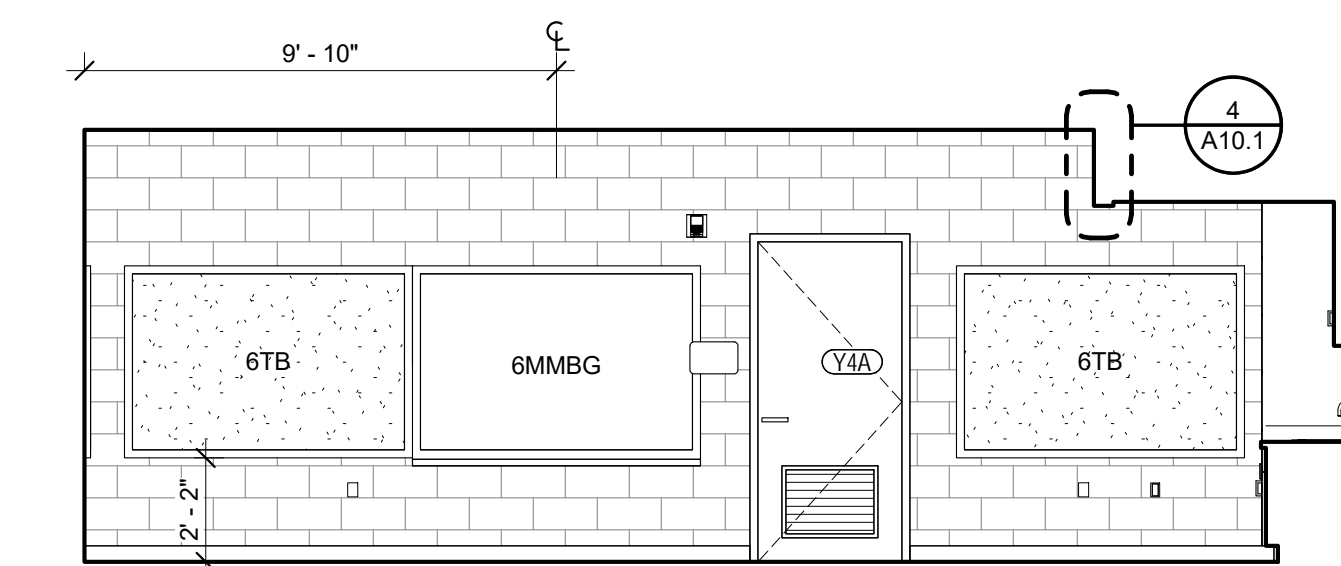
**5 MUSIC 4**  
1/4" = 1'-0"



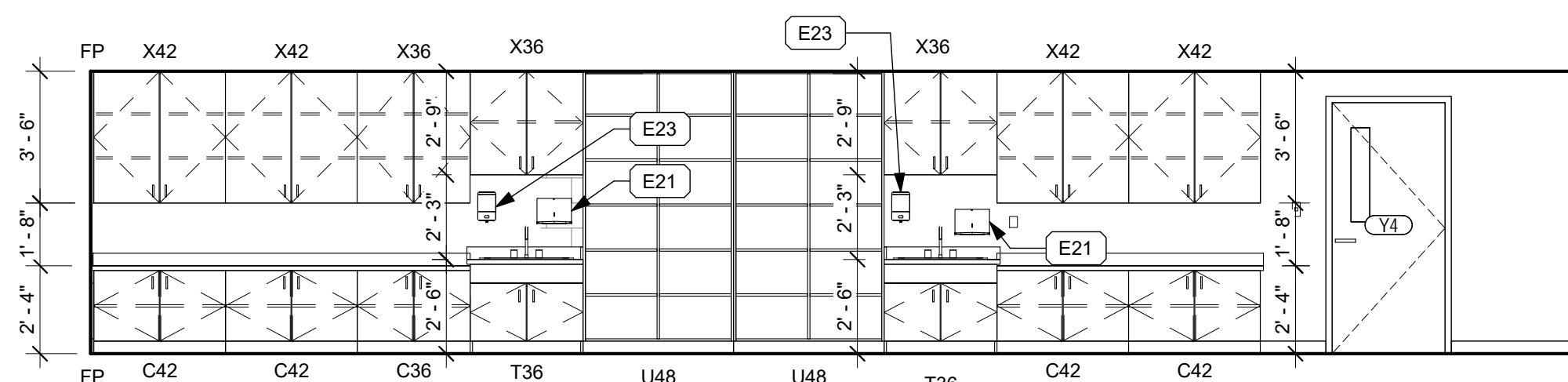
**6 ART**  
1/4" = 1'-0"



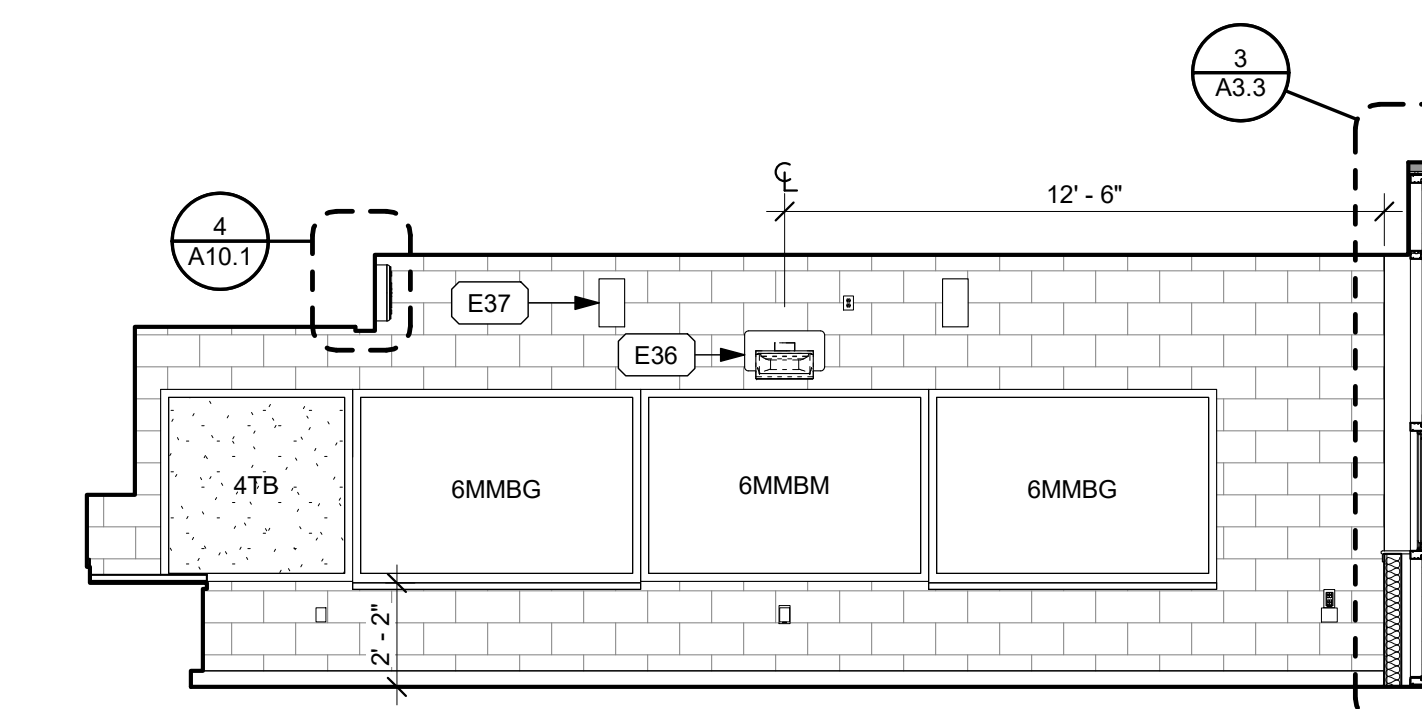
**7 ART 1**  
1/4" = 1'-0"



**8 ART 2**  
1/4" = 1'-0"



**9 ART 3**  
1/4" = 1'-0"



**10 ART 4**  
1/4" = 1'-0"

**INTERIOR ELEVATION NOTES:**

1. SEE SHEET A6.1 FOR EQUIPMENT SCHEDULE AND KEYED WORK NOTES FOR THIS SHEET.
2. REFER TO SHEET F0.1 FOR FINISH SCHEDULE AND MATERIALS
3. REFER TO SHEET F2.2 FOR TILE PATTERNS
4. REFER TO SHEET F3.1 FOR FINISH DETAILS

**architecture**  
incorporated

1902 campus commons drive  
suite 101  
reston, virginia 20191  
Tel: 703.476.3900  
Fax: 703.264.0733  
www.archinc.com

Construction Documents for:  
**ROCKINGHAM CO. PUBLIC SCHOOLS**  
**JOHN WAYLAND ES**  
**RENOVATION AND ADDITION**  
801 N. MAIN STREET,  
BRIDGEWATER, VA 22812

Project: 16034-01

Issued 02-01-2017

BID SET

Revisions	
1	ADDENDUM 1 02/15/17

**ENLARGED PLAN - MUSIC AND ART**

Scale: As indicated  
Drawn: KBEL4  
Checked: CRS

**A6.5**

BID SET