

COUNTY OF ALBEMARLE

PANTOPS
PUBLIC SAFETY
FACILITY

IFB # 2017-11223-20

CHARLOTTEVILLE,
VIRGINIA

REVISIONS

NO.	DATE	DESCRIPTION

DATE	DESCRIPTION

COMMISSION NUMBER
2160310

SCALE: **AS NOTED**

DESIGNED: **DOB**

DRAWN: **DOB**

CHECKED: **DFB**

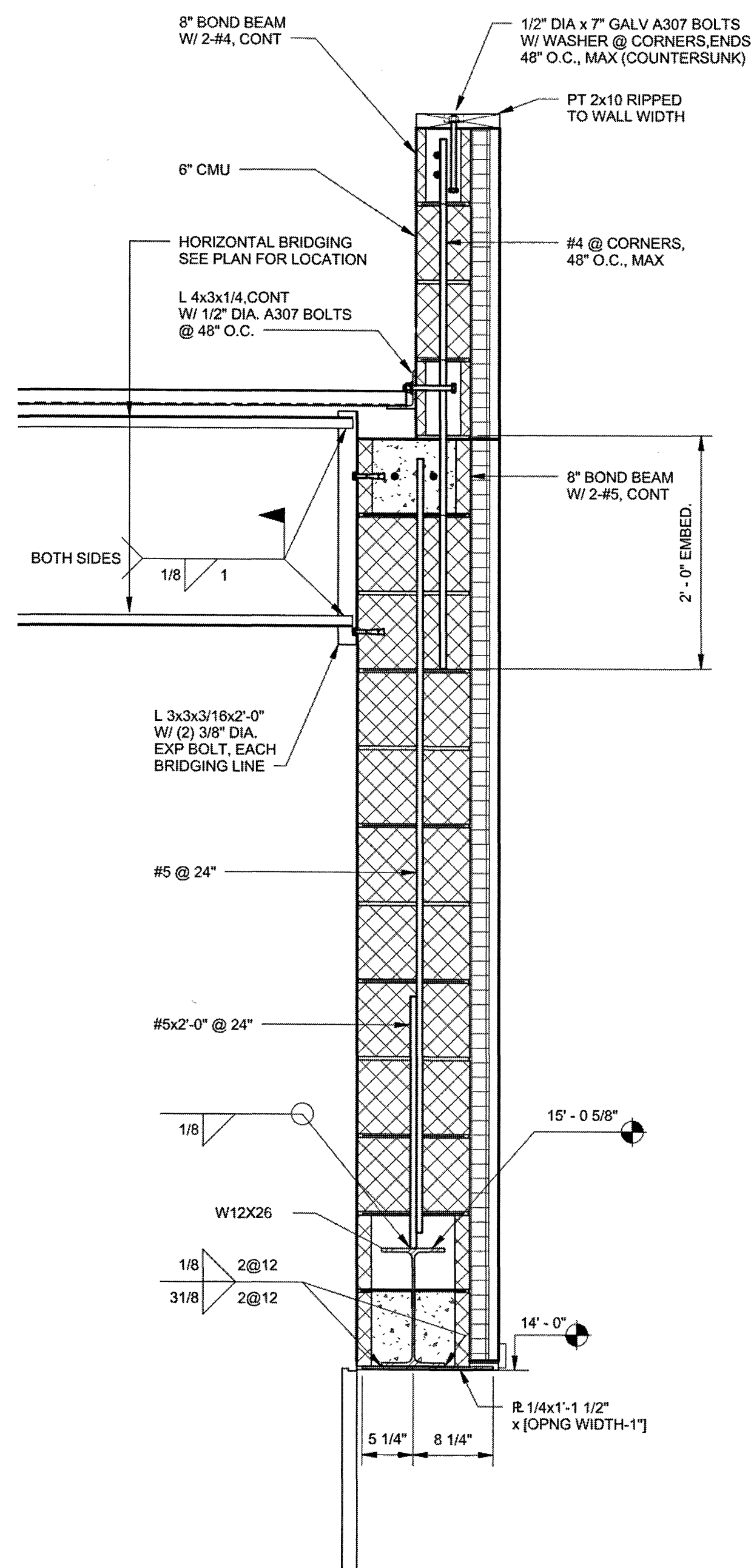
DATE: **10.28.2016**

THIS DOCUMENT CONTAINS PROPRIETARY INFORMATION TO DJG, INC. AND IS FURNISHED IN CONFIDENCE AS AN INSTRUMENT OF SERVICE FOR THE LIMITED PURPOSE OF EVALUATION, BIDDING AND REVIEW, OR CONSTRUCTION OF A SPECIFIC PROJECT. REPRODUCTION OF THIS DOCUMENT, IN WHOLE OR IN PART, OR THE MODIFICATION OF ANY DETAIL OR DESIGN WITHOUT THE EXPRESSED WRITTEN CONSENT OF DJG, INC. IS PROHIBITED. ALL RIGHTS RESERVED. COPYRIGHT DJG, INC. (C) 2016

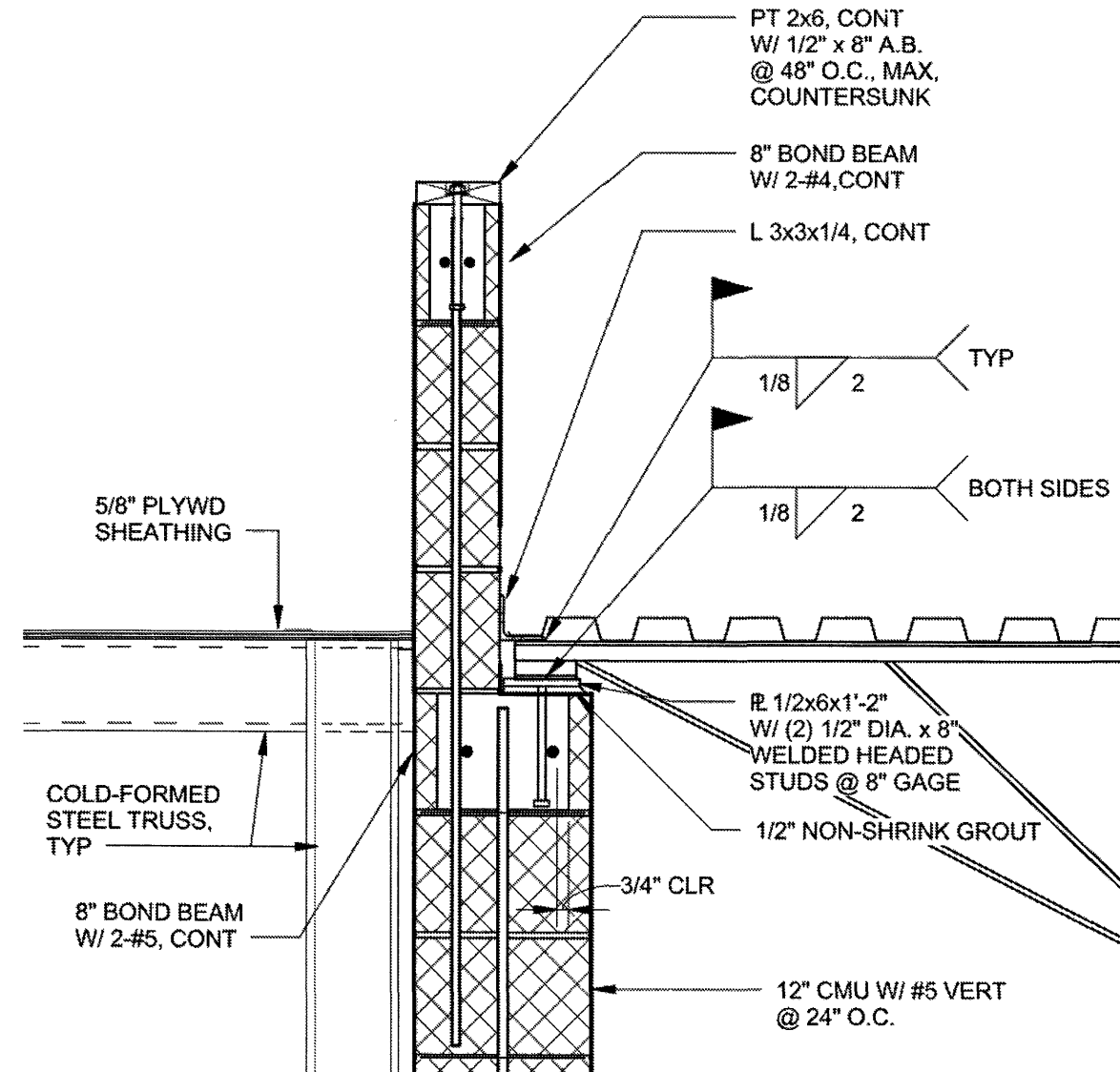
SECTIONS AND
DETAILS

SHEET NUMBER
S-303

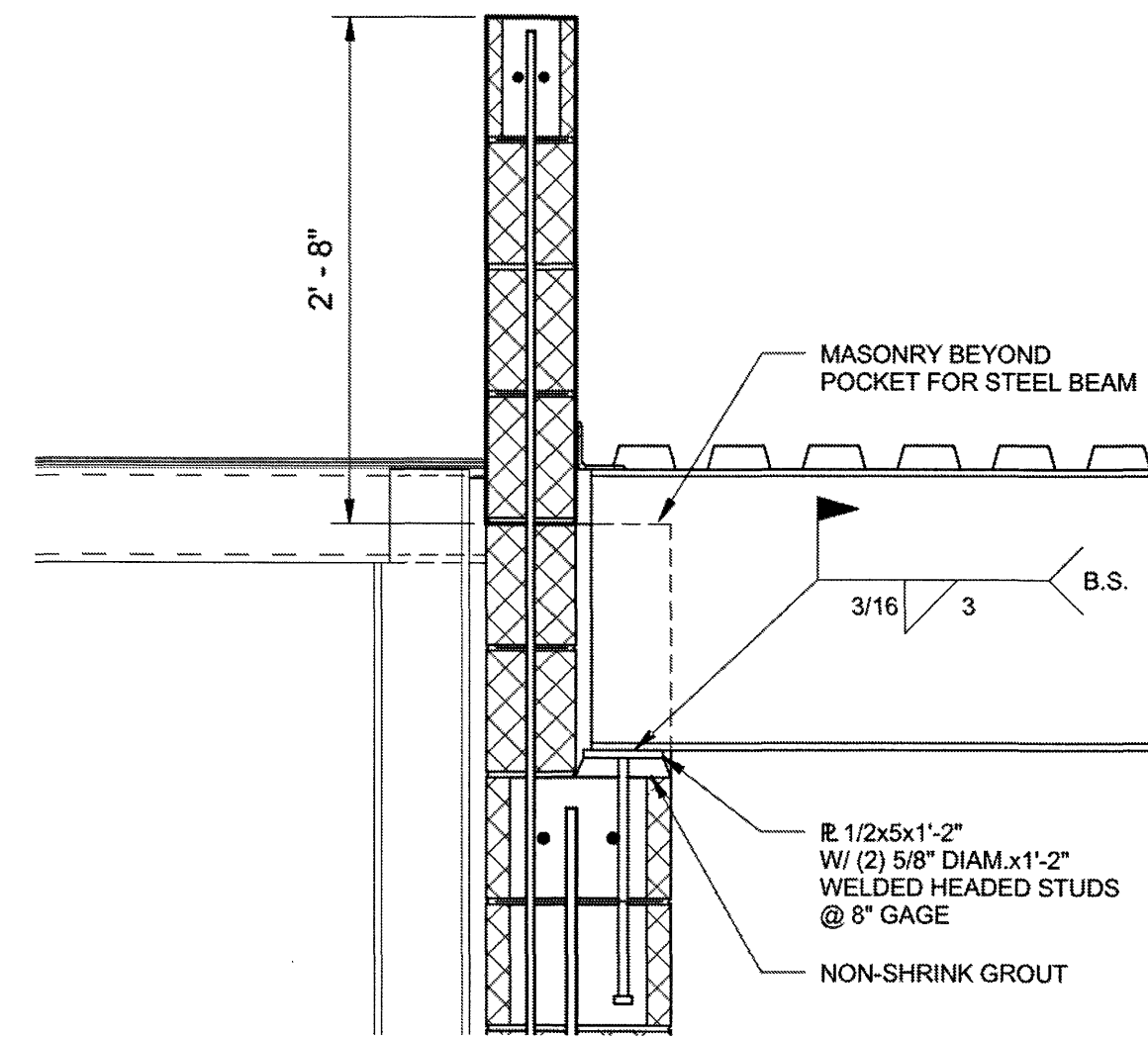
45 OF 68



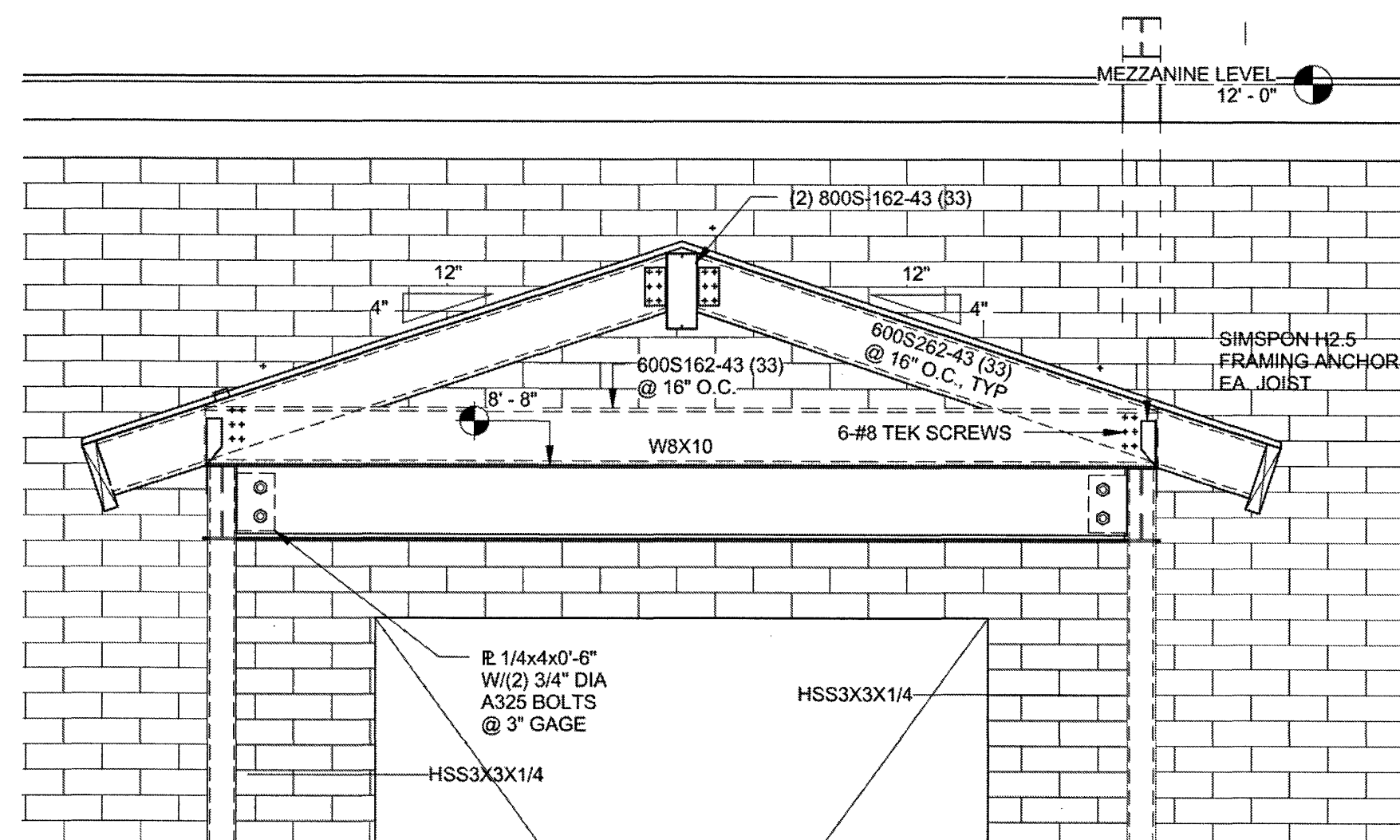
1 SECTION - OVERHEAD DOOR
1" = 1'-0"



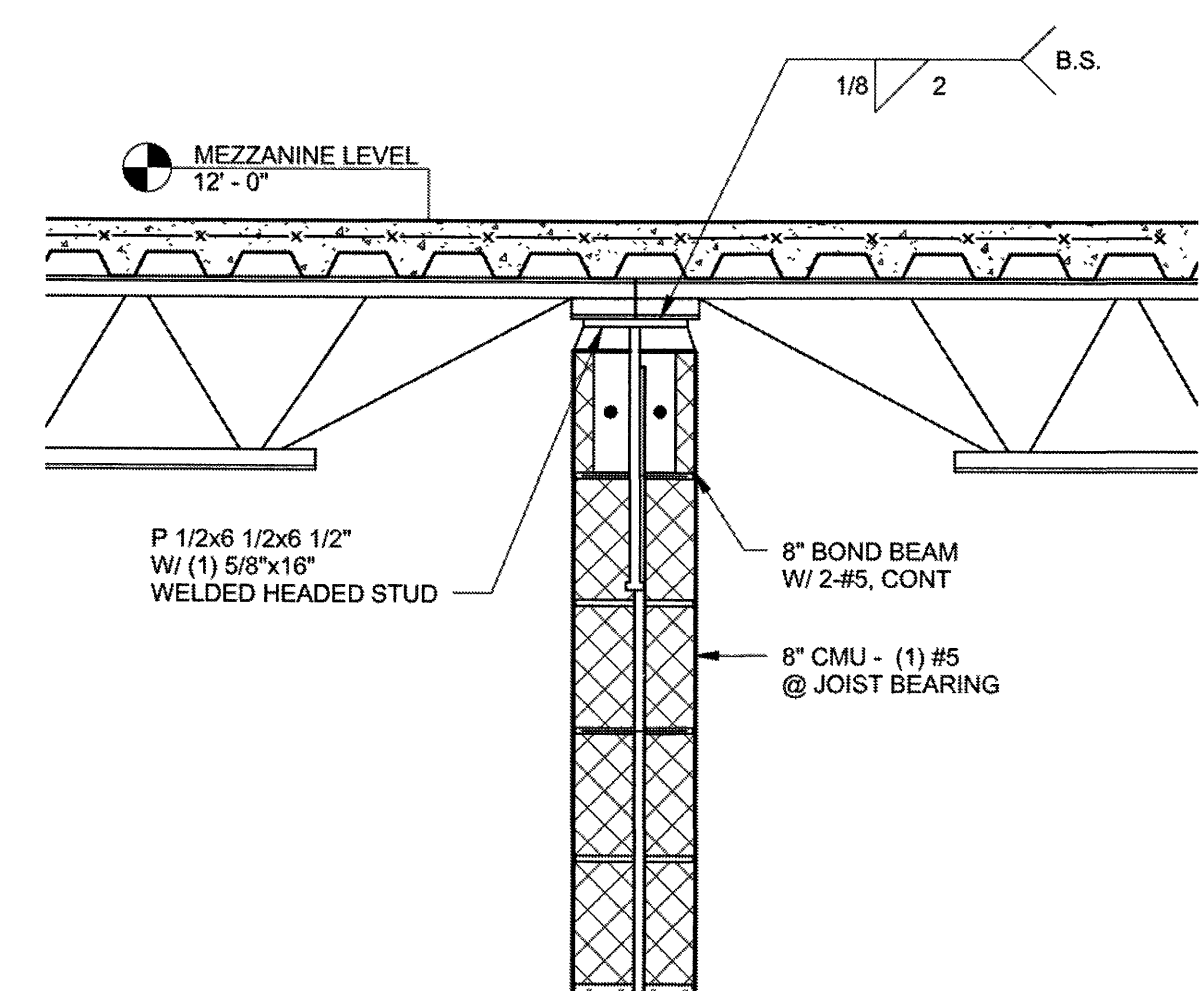
2 OWSJ BEARING @ ROOF
1" = 1'-0"



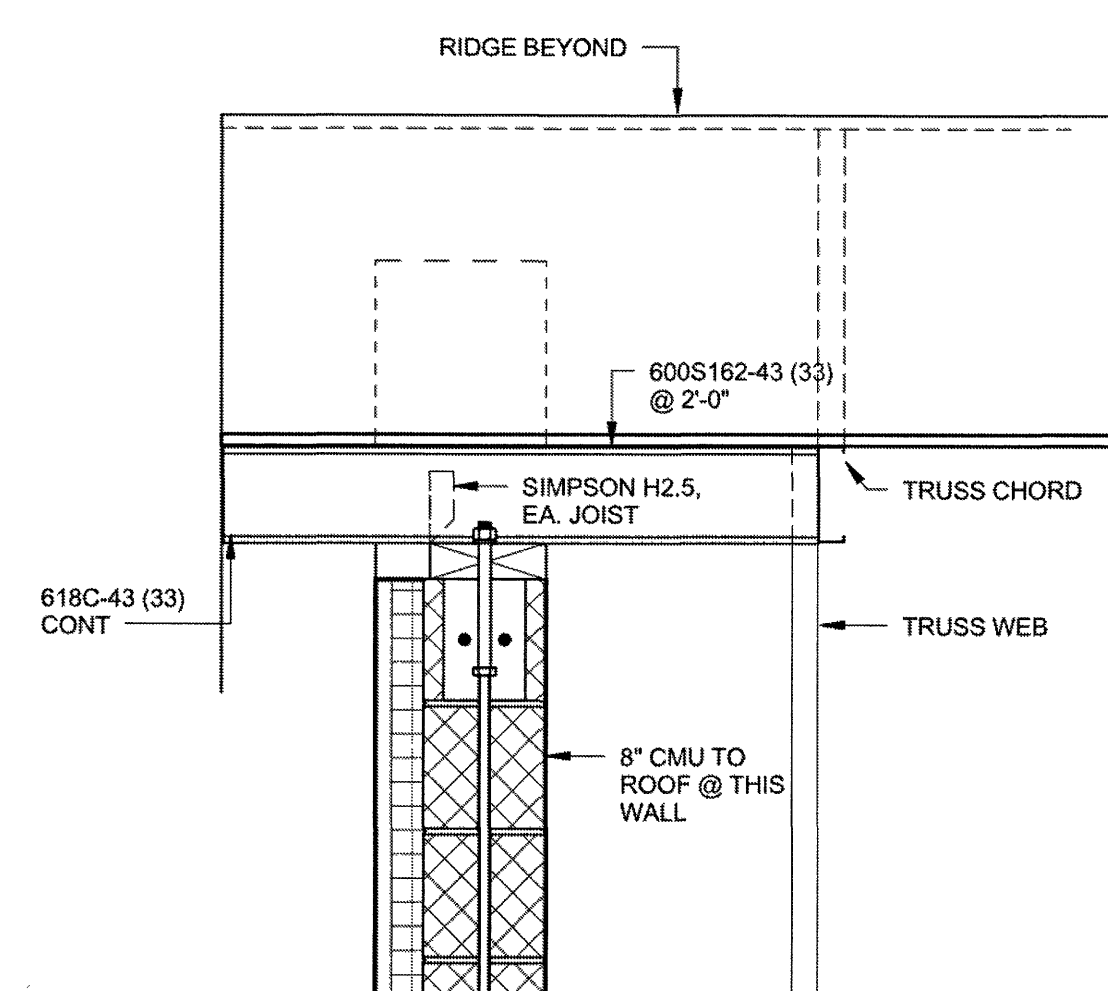
3 SECTION @ STEEL BEAM BR'G
1" = 1'-0"



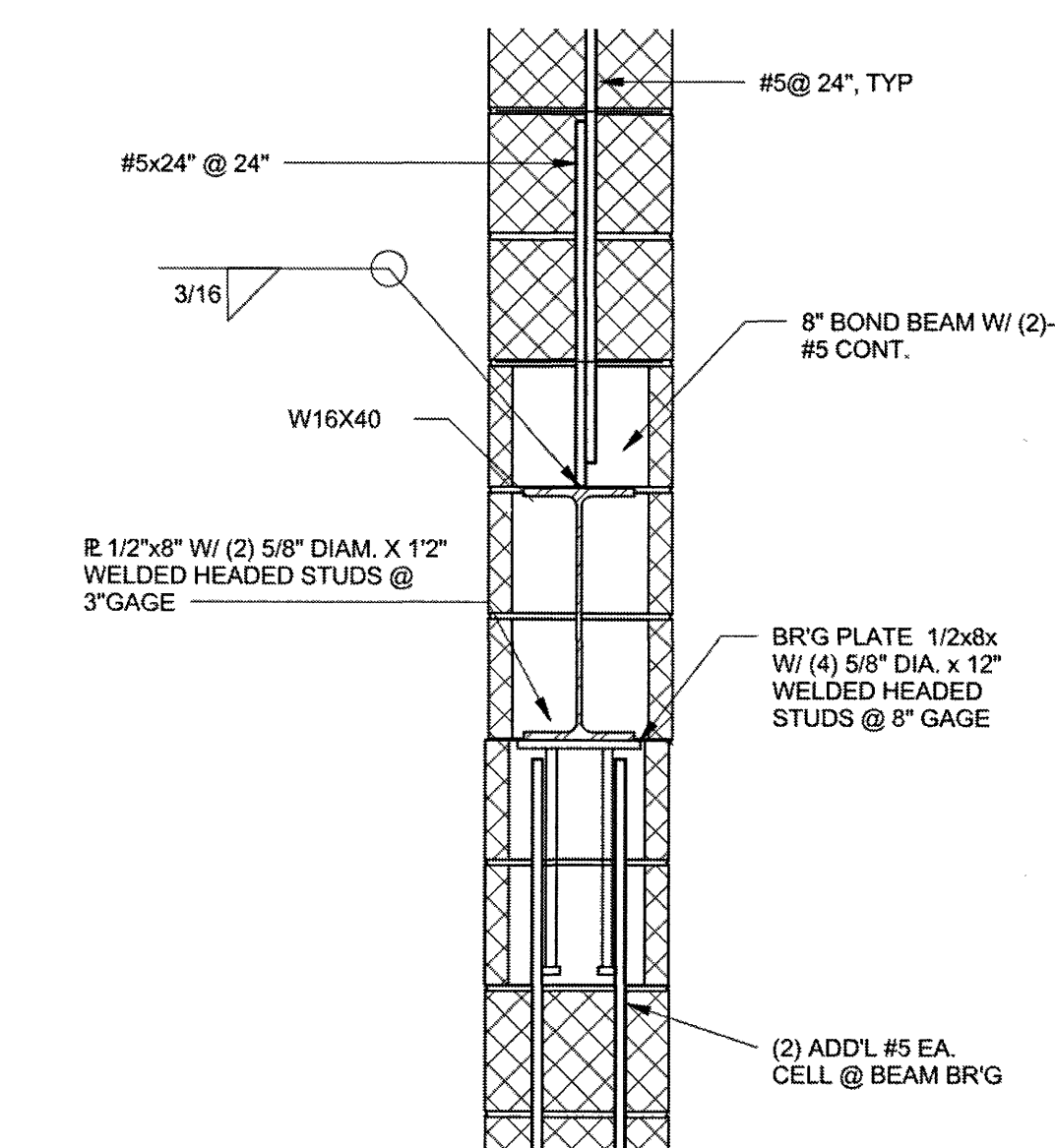
4 SECTION @ ENTRY ROOF
3/4" = 1'-0"



5 SECTION - FLOOR JOIST BEARING
1" = 1'-0"



16 SECTION - ROOF @ MECH. ROOM
1" = 1'-0"



6 SECTION @ FITNESS ROOM BEAM
1" = 1'-0"