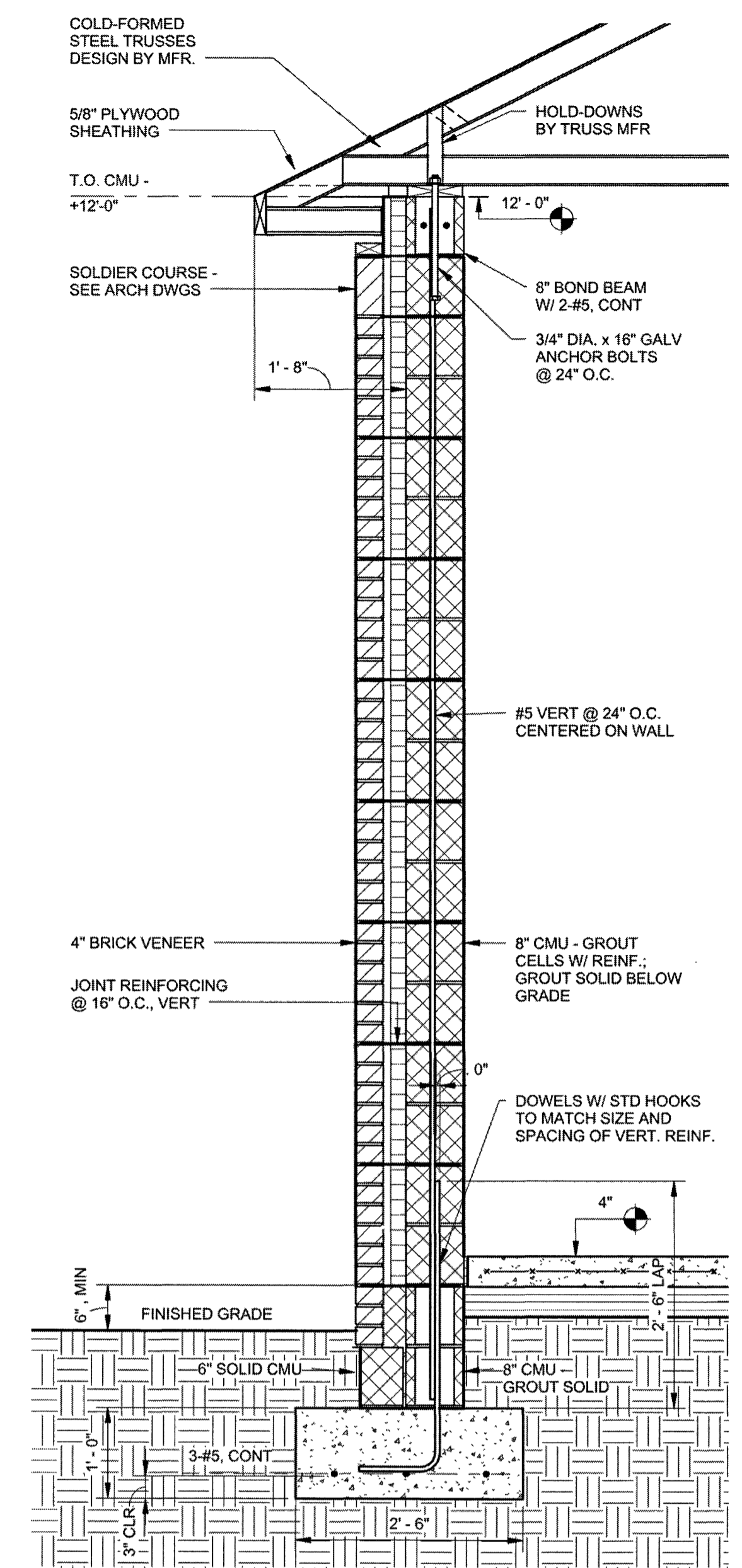
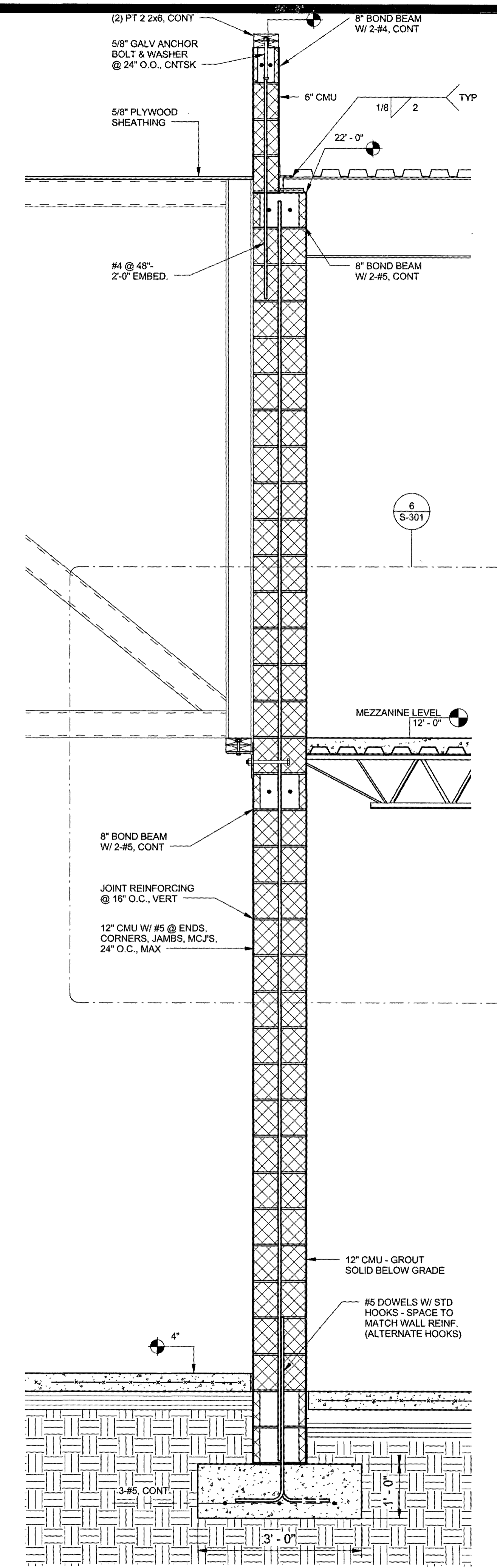


1 FOUNDATION PLAN
1/8" = 1'-0"



2 SECTION @ WEST WALL
3/4" = 1'-0"

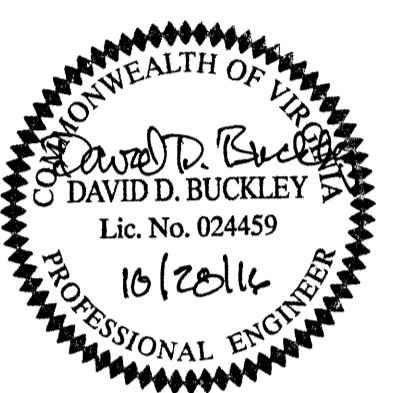


3 SECTION @ DIVIDING WALL
3/4" = 1'-0"



**ENGINEERS
ARCHITECTS
PLANNERS**

449 McLAWS CIRCLE
WILLIAMSBURG, VA 23185
(757) 253-0673 VOICE
(757) 253-2319 FAX
www.djginc.com



COUNTY OF ALBEMARLE

**PANTOPS
PUBLIC SAFETY
FACILITY**

IFB # 2017-11223-20

CHARLOTTESVILLE,
VIRGINIA

REVISIONS

DATE	DESCRIPTION
COMMISSION NUMBER	
2160310	
SCALE: 1/4"=1'-0"	
DESIGNED:	DDB
DRAWN:	DDB
CHECKED:	DFB
DATE:	10.28.2016

THIS DOCUMENT CONTAINS INFORMATION PROPRIETARY TO DJG, INC. AND IS FURNISHED IN CONFIDENCE AS AN INSTRUMENT OF SERVICE FOR THE LIMITED PURPOSE OF EVALUATION, BIDDING AND REVIEW OR CONSTRUCTION OF A SPECIFIC PROJECT. REPRODUCTION OF THIS DOCUMENT, IN WHOLE OR IN PART, OR THE MODIFICATION OF ANY DETAIL OR DESIGN WITHOUT THE EXPRESSED WRITTEN CONSENT OF DJG, INC. IS PROHIBITED. ALL RIGHTS RESERVED. COPYRIGHT DJG, INC. © 2016.

SHEET TITLE
**FOUNDATION
PLAN**

SHEET NUMBER
S-102
41 OF 68