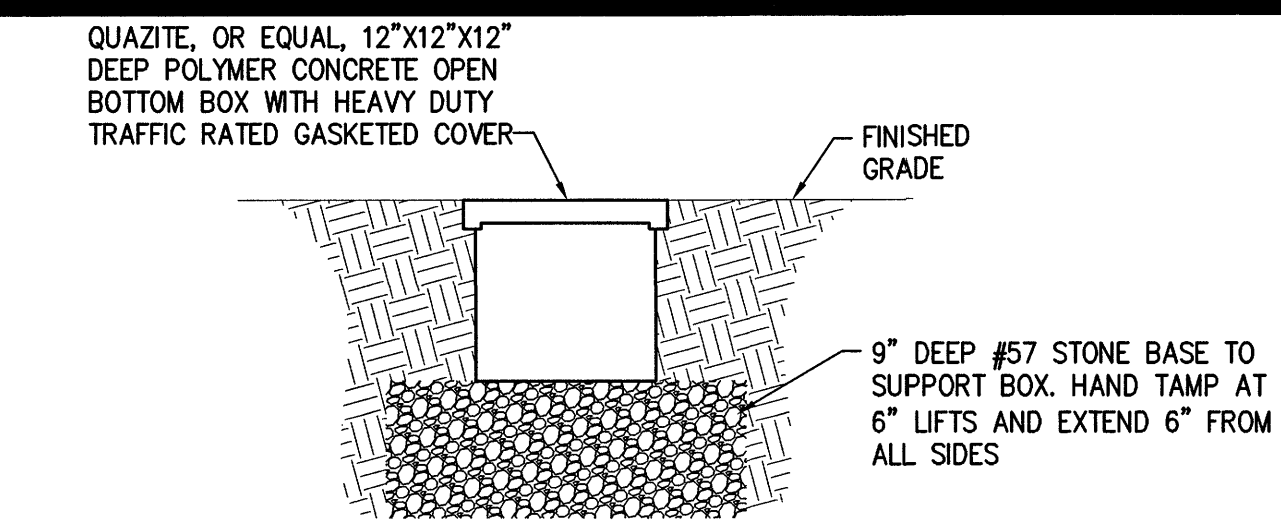


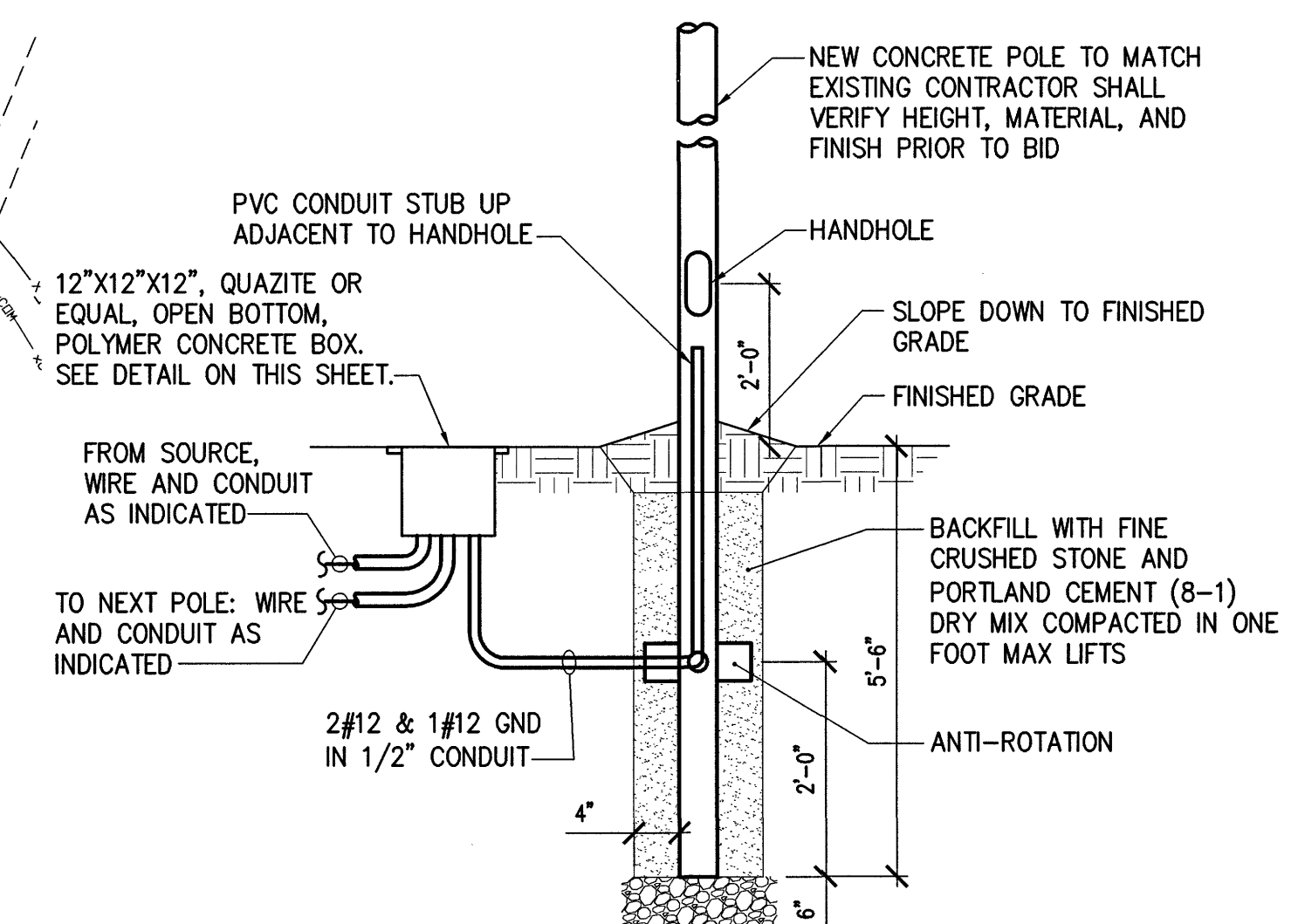
LIGHTING FIXTURE SCHEDULE						
MARK	MANUFACTURER	CATALOG NO.	VOLTS	LAMPS	MOUNTING	NOTES
A	CREE	OSQ A 3ME B 40K BZ	120	LED 11000 LUMENS	POLE MOUNT	1,2
B	HYDREL	TPS2 36LED WHT41K MVOLT NSP LDM DDB	120	LED 5300 LUMENS	SURFACE MOUNT AT GRADE	3,4

LIGHTING FIXTURE SCHEDULE NOTES:

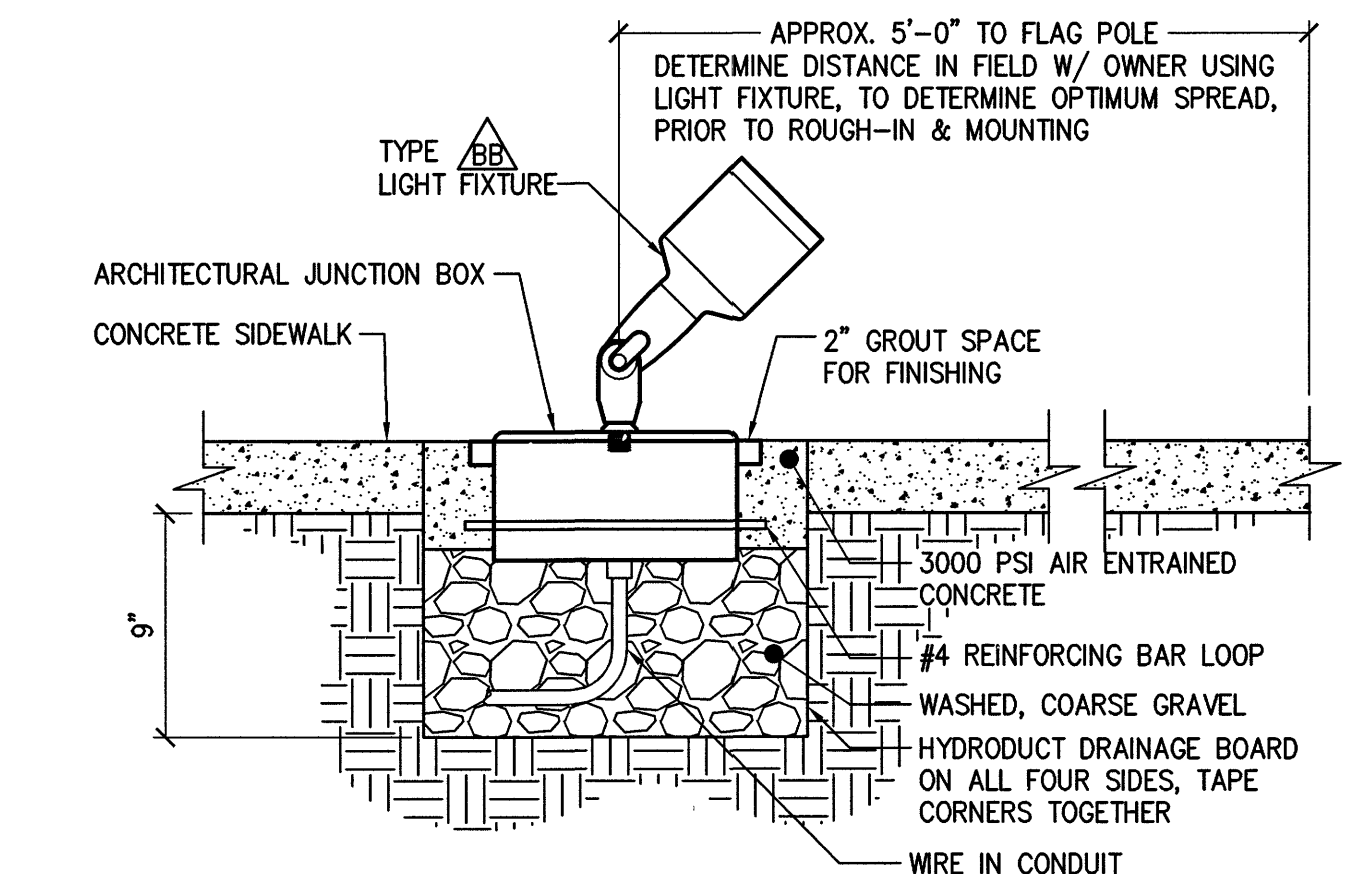
1. PROVIDE FIXTURE WITH FUSE AND MINIMUM 10YR WARRANTY.
2. PROVIDE WHATLEY TR34-25-DE-DB2-SMS POLE. SEE POLE FOUNDATION DETAIL ON SHEET ES-101.
3. SEE FOUNDATION DETAIL, THIS SHEET.
4. PROVIDE FIXTURE WITH 0-10V DIMMING. CONNECT TO DIMMER NEAR MAIN ENTRANCE. SEE LIGHTING PLAN SHEET E-101 AND CONTACTOR DETAIL, SHEET E-501.



TYPICAL IN-GRADE JUNCTION/PULL BOX DETAIL  
NOT TO SCALE



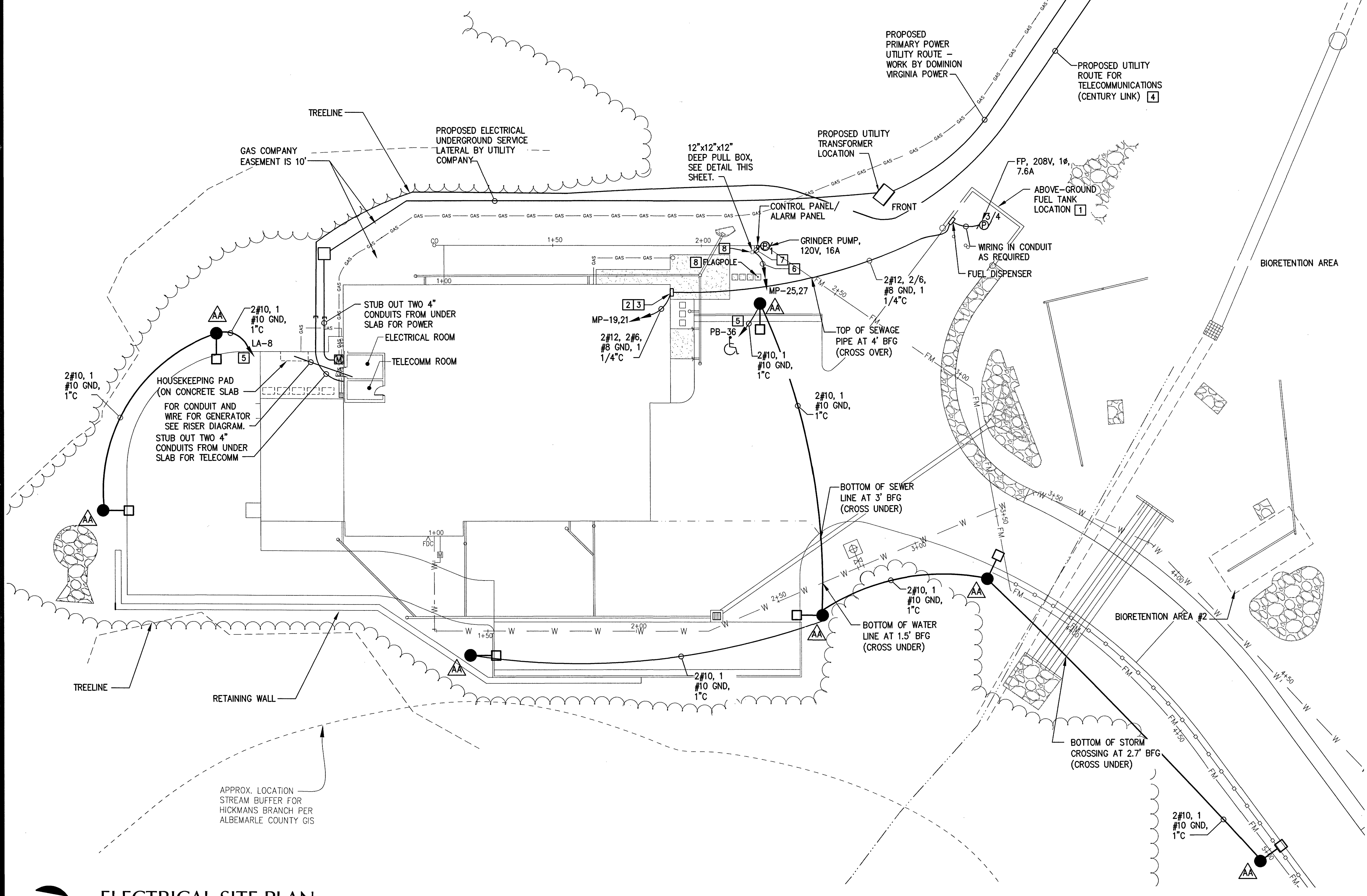
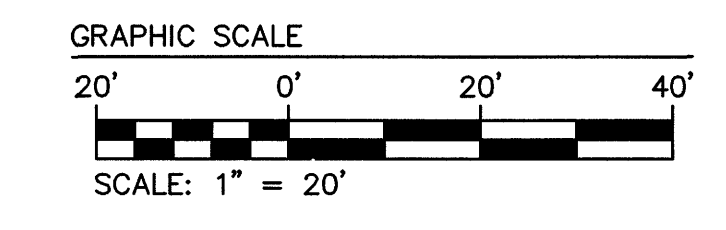
CONCRETE LIGHT POLE FOUNDATION DETAIL  
NOT TO SCALE



FLAG LIGHTING DETAIL - TYPE "BB"  
NOT TO SCALE (TYP. 2)

ELECTRICAL NEW WORK NOTES (THIS SHEET ONLY)

1. CLASS 1 AND 2 HAZARDOUS AREA. PROVIDE SEAL-OFF AS FIRST FITTING WHEN EXITING/ENTERING SLAB. USE THREADED RIGID STEEL CONDUIT ABOVE GRADE AND MINIMUM FIRST 2' BELOW GRADE. USE EXPLOSION PROOF BOXES AND FITTINGS. CONNECT EQUIPMENT GROUNDS TO BOXES.
2. PROVIDE NEMA 3R EMERGENCY-PUSH-OFF SWITCH (UL LISTED, MUSHROOM HEAD, 4 CONTACT, 20A CONTINUOUS LOAD, 120/240V, RED PUSHBUTTON, KEY RESET) TO DISCONNECT ALL LINE AND THE NEUTRAL CONDUCTOR FOR THE FUEL TANK AND CONTROLLER. PROVIDE PERMANENT PLAQUE "FUEL PUMP EMERGENCY DISCONNECT."
3. PROVIDE SEAL-OFF AS FIRST FITTING WHEN EXITING FROM FUEL TANK AREA. USE THREADED RIGID STEEL CONDUIT FROM FITTING TO 2' BFG.
4. CONTRACTOR WILL COORDINATE WITH CENTURY LINK AND MEET NECESSARY REQUIREMENTS FOR ROUTING COMMUNICATIONS SERVICE ENTRY.
5. COMBINE HOMERUNS (2 INDICATED ON THIS SHEET) FOR AA TYPE FIXTURES PRIOR TO LIGHTING CONTACTOR CONNECTION.
6. 2#4 AND 1#4GND FOR PUMP AND 2#10 FOR ALARM PANEL IN 1 1/2" CONDUIT.
7. 2#10 AND 1#10GND FOR PUMP AND 2#12 FOR ALARM PANEL IN 1" CONDUIT.
8. 12"x12"x12" DEEP BOX FOR GRINDER PUMP WIRING. TRANSITION FROM #4 WIRING TO #10 WIRING FOR PUMP AND #10 TO #12 FOR ALARM PANEL HERE.
9. PROVIDE TWO TYPE BB FLOOD LIGHTS TO ILLUMINATE FLAG POLE. MOUNT AS INDICATED ON SCHEDULE AND FLAG LIGHTING DETAIL. CONNECT FLOOD LIGHTS TO SITE LIGHTING CIRCUIT THRU CONTACTOR, SEE CONTACTOR DETAIL, SHEET E-501.

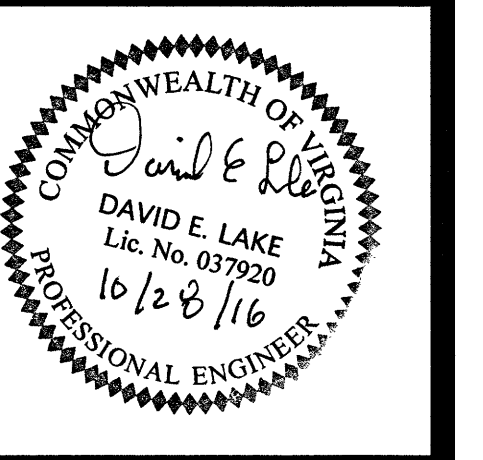


ELECTRICAL SITE PLAN  
SCALE: 1"=20'



ENGINEERS  
ARCHITECTS  
PLANNERS

449 McLAWS CIRCLE  
WILLIAMSBURG, VA 23185  
(757) 253-0673 VOICE  
(757) 253-2319 FAX  
www.djginc.com



COUNTY OF ALBEMARLE

PANTOPS  
PUBLIC SAFETY  
FACILITY

IFB # 2017-11223-20

CHARLOTTEVILLE,  
VIRGINIA

REVISIONS

NO.	DATE	DESCRIPTION

DATE	DESCRIPTION

COMMISSION NUMBER  
**2160310**

SCALE: AS SHOWN

DESIGNED: DEL

DRAWN: DEL

CHECKED: JAM

DATE: 10.28.2016

SHEET TITLE

ELECTRICAL SITE  
PLAN

SHEET NUMBER

ES-101

64 OF 68