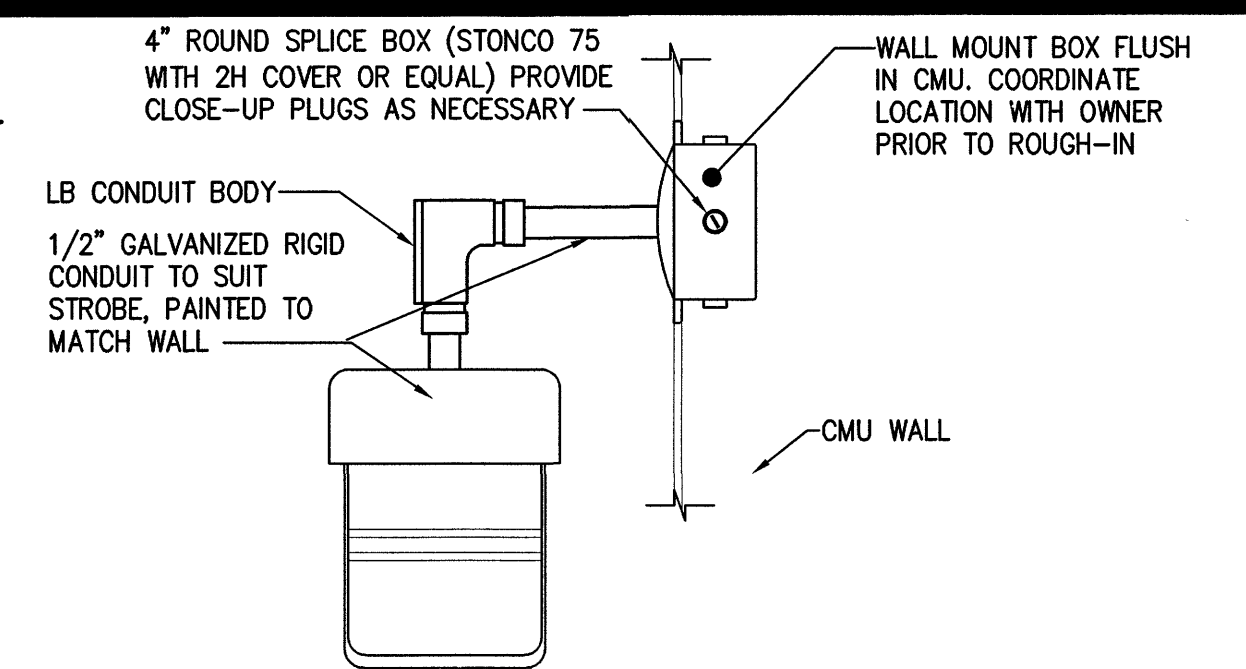


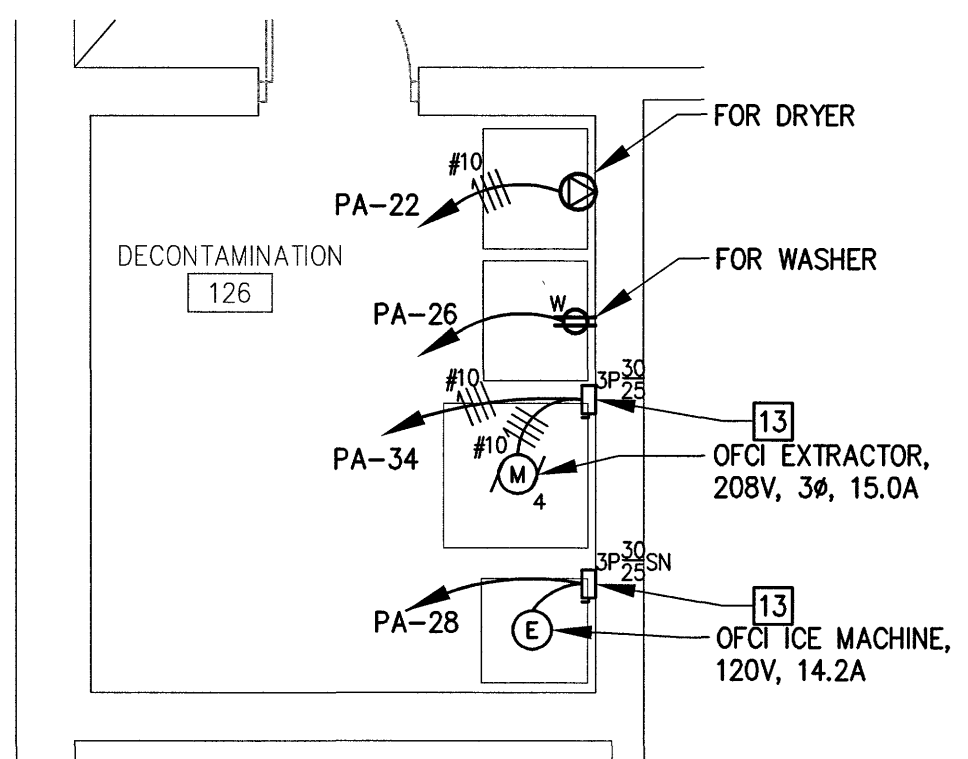
ELECTRICAL POWER PLAN - GROUND FLOOR
SCALE: 1/8" = 1'-0"

ELECTRICAL NEW WORK NOTES (THIS SHEET ONLY)

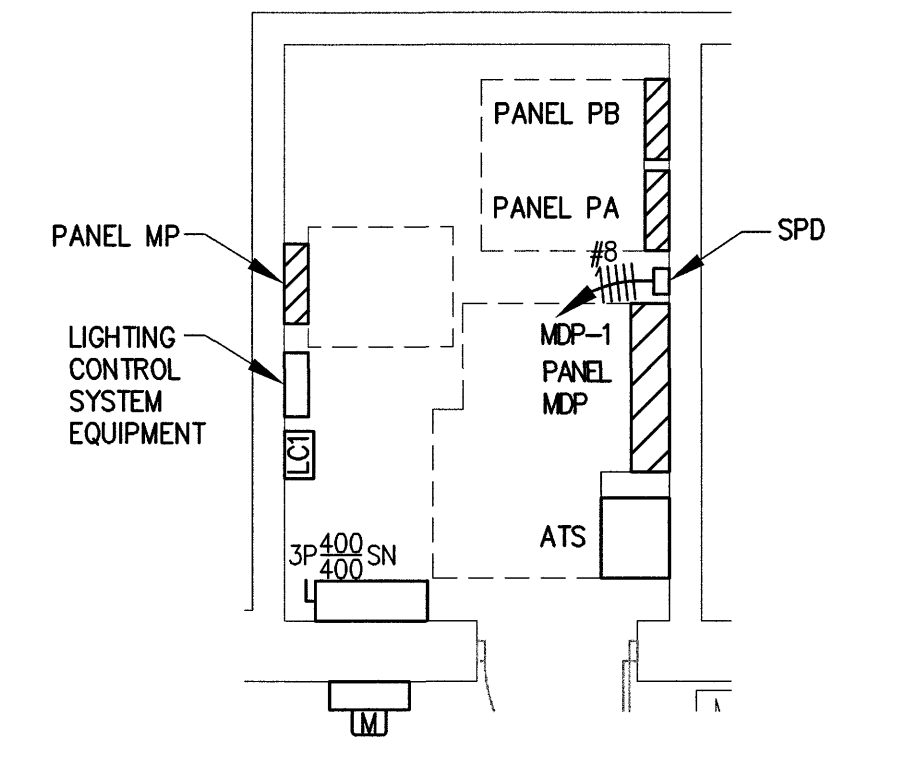
- 1 CIRCUIT IN AND OUT OF DISCONNECT WITH 2#8, #10G IN 3/4"C.
- 2 FOR GAS-FIRED INFRARED HEATER. MOUNT RECEPTACLE TO ROOF STRUCTURE ADJACENT TO UNIT HEATER.
- 3 MOUNT 12" UNDER COUNTER.
- 4 CONNECT TO LIGHTING CIRCUIT SERVING TURN-OUT GEAR RM 120. CONNECT TO LIGHTING CONTROLS SUCH THAT FAN IS INTERLOCKED WITH LIGHTING.
- 5 CONNECT TO LIGHTING CIRCUIT SERVING SPACE. CONNECT TO LIGHTING CONTROLS SUCH THAT FAN IS INTERLOCKED WITH LIGHTING CONTROLS.
- 6 CONDUIT RUN IN APPARATUS BAYS AND THE BAY OF THE MAINTENANCE BUILDING SHALL BE CONCEALED IN WALLS, BELOW FLOOR SLAB OR SURFACE MOUNTED ALONG THE ROOF STRUCTURE ABOVE. IF SPECIAL ALLOWANCE IS GRANTED BY THE ENGINEER OF RECORD TO RUN SURFACE-MOUNTED CONDUIT ON WALLS, THIS CONDUIT SHALL BE RMC WITH CAST METAL BOXES.
- 7 CONNECT STROBE LIGHT TO RESPECTIVE DOOR MOTOR CIRCUIT.
- 8 OVERHEAD DOOR OPERATOR, 120V, 9.8A. DOOR OPERATING MECHANISMS WITH ALL NECESSARY CONTROL AND SAFETY DEVICES WILL BE FURNISHED WITH DOOR. ELECTRICAL CONTRACTOR SHALL PROVIDE ALL NECESSARY CONNECTIONS TO INTERCONNECT THE DEVICES AND MAKE THE DOOR FULLY OPERABLE. PROVIDE ALL NECESSARY CONNECTIONS BETWEEN DOOR OPERATORS AND APPARATUS BAY EXHAUST SYSTEM TO PROVIDE THE SEQUENCE OF OPERATION AS INDICATED IN EXHAUST SYSTEM SKETCH. PROVIDE ALL BOXES, FITTINGS, CONDUIT AND WIRE AS NECESSARY.
- 9 MOUNT DISCONNECT SWITCH ADJACENT TO OPERATOR.
- 10 OVERHEAD DOOR OPERATOR, 120V, 9.8A.
- 11 OFCI AIR COMPRESSOR, 208V, 3#, 5HP, 16.7A.
- 12 MOUNT DUPLEX CONVENIENCE RECEPTACLES 24" AFF IN APPARATUS BAYS.
- 13 MOUNT SWITCH AFF TO SUIT EQUIPMENT. CONTRACTOR SHALL COORDINATE ROUGH IN AND SWITCH LOCATION WITH EQUIPMENT FURNISHED.
- 14 OFCI SCBA COMPRESSOR, 208V, 3#, 7.5HP, 24.2A, SERVE WITH 3#8 AND 1#10 GND IN 3/4"C.
- 15 DISCONNECT SWITCH FOR P-1, MOUNT ADJACENT TO PUMP, WIRE AHEAD OF CONTROL TIMER AND THERMOSTAT SUCH THAT ALL CONTROLS ARE ON LOAD SIDE OF SWITCH. COORDINATE WITH PLUMBING DRAWINGS PRIOR TO ROUGH IN.
- 16 PROVIDE JUNCTION BOX ABOVE PANELBOARD AND TIE HOMERUNS TOGETHER HERE. EXTEND A SINGLE SET OF CONDUCTORS TO CIRCUIT BREAKER.



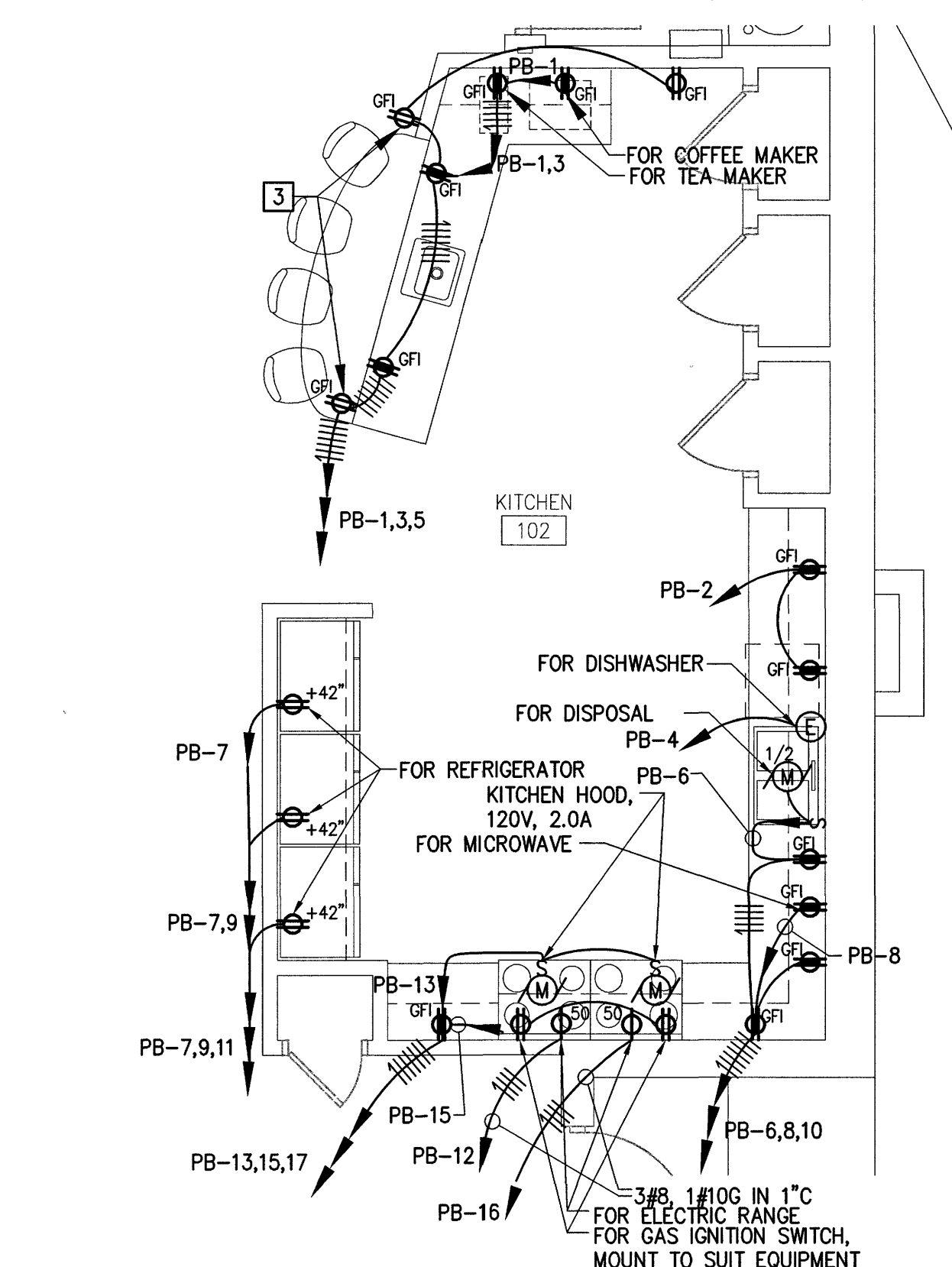
STROBE LIGHT DETAIL
NOT TO SCALE (TYPICAL FOR 5)



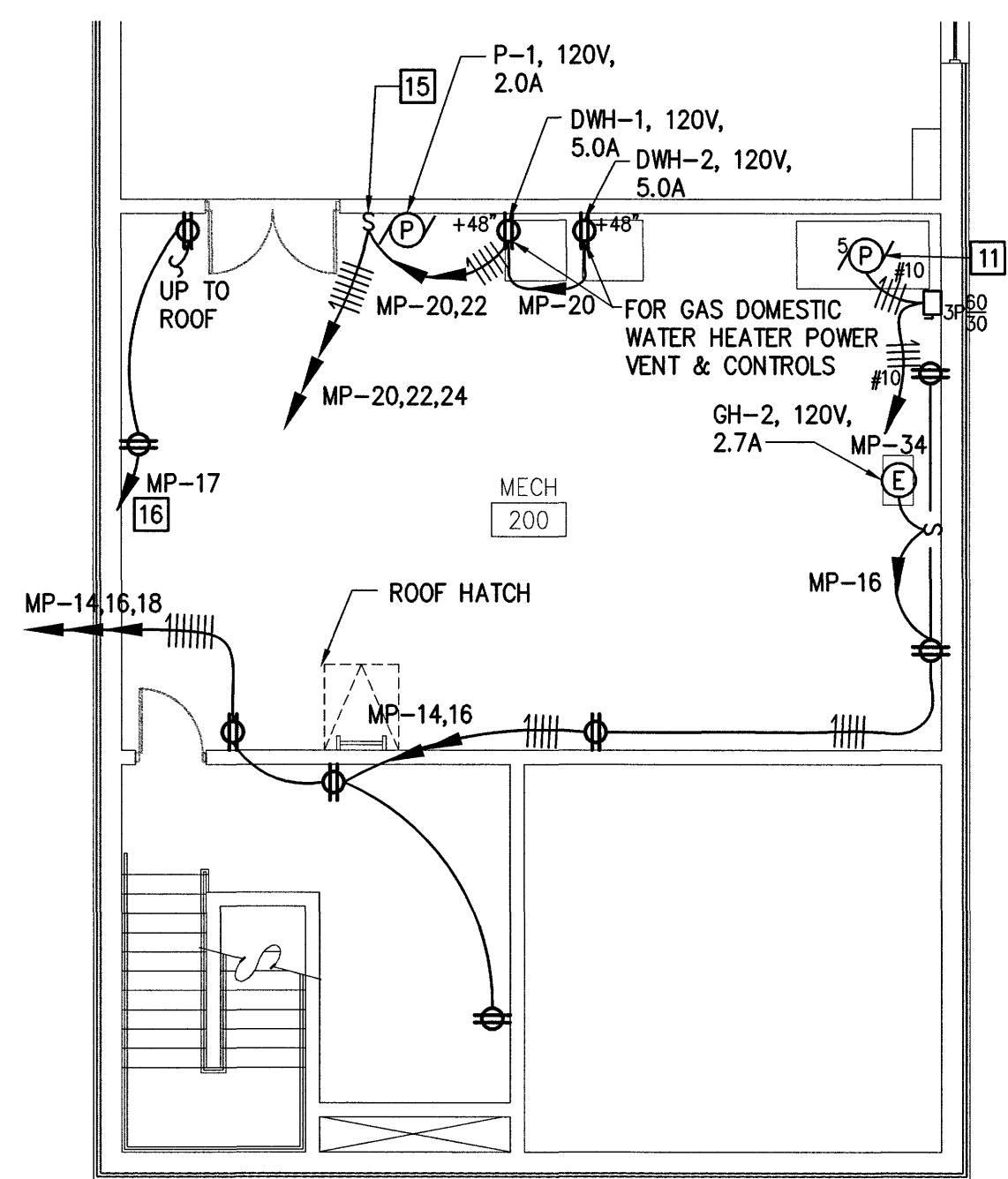
ELECTRICAL POWER PLAN - DECONTAMINATION ROOM
SCALE: 1/4" = 1'-0"



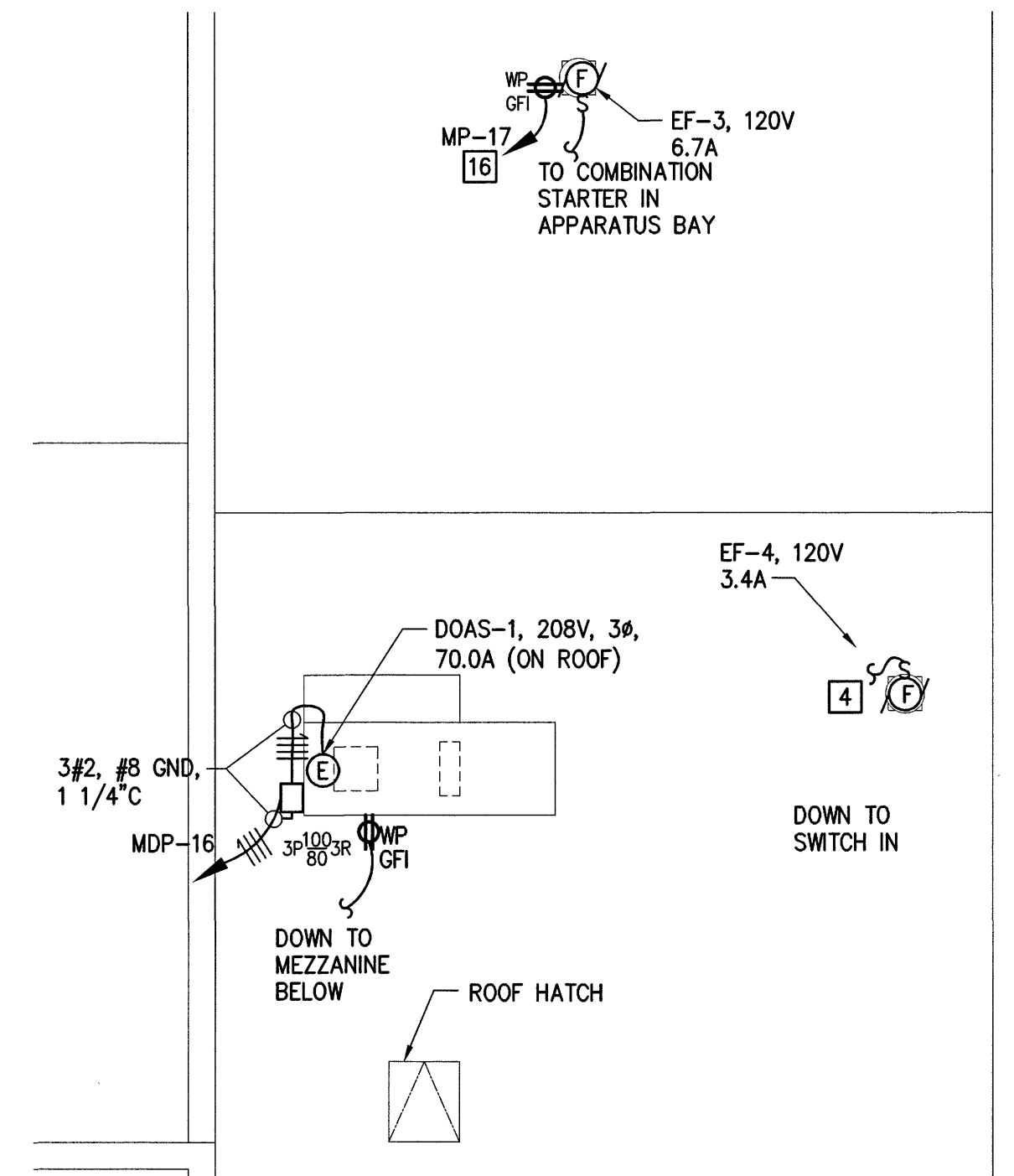
ELECTRICAL POWER PLAN - ELECTRICAL ROOM
SCALE: 1/4" = 1'-0"



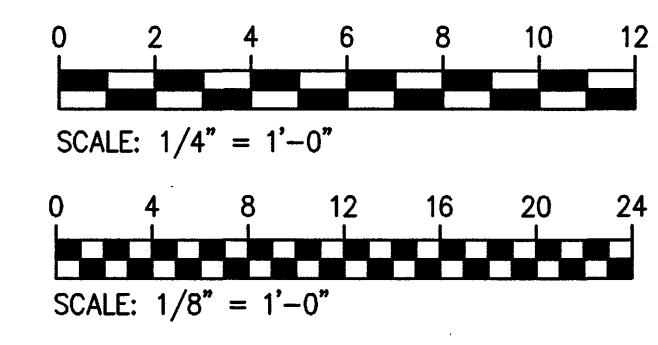
ELECTRICAL POWER PLAN - MEZZANINE
SCALE: 1/4" = 1'-0"



ELECTRICAL POWER PLAN - MEZZANINE
SCALE: 1/8" = 1'-0"

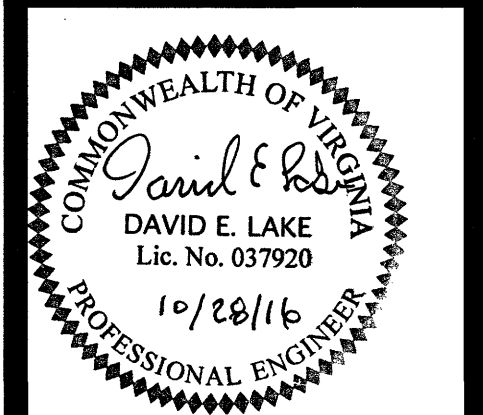


ELECTRICAL POWER PLAN - ROOF
SCALE: 1/8" = 1'-0"



**ENGINEERS
ARCHITECTS
PLANNERS**

449 McLAWS CIRCLE
WILLIAMSBURG, VA 23185
(757) 253-0673 VOICE
(757) 253-2319 FAX
www.djginc.com



COUNTY OF ALBEMARLE

**PANTOPS
PUBLIC SAFETY
FACILITY**

IFB # 2017-11223-20

CHARLOTTEVILLE,
VIRGINIA

REVISIONS

NO.	DATE	DESCRIPTION

COMMISSION NUMBER	2160310
SCALE:	AS NOTED
DESIGNED:	DEL
DRAWN:	DEL
CHECKED:	JAM
DATE:	10.28.2016

THIS DOCUMENT CONTAINS INFORMATION PROPRIETARY TO DJG, INC. AND IS FURNISHED IN CONFIDENCE AS AN INSTRUMENT OF SERVICE FOR THE LIMITED PURPOSE OF EVALUATION, BIDDING AND REVIEW. REPRODUCTION OR CONSTRUCTION OF ANY PART OF THIS DOCUMENT, IN WHOLE OR IN PART, OR THE MODIFICATION OF ANY DETAIL OR DESIGN WITHOUT THE WRITTEN CONSENT OF DJG, INC. IS PROHIBITED. ALL RIGHTS RESERVED. COPYRIGHT DJG, INC. (C) 2016.

SHEET TITLE
**ELECTRICAL
POWER PLAN**

SHEET NUMBER

E-102

59 OF 68