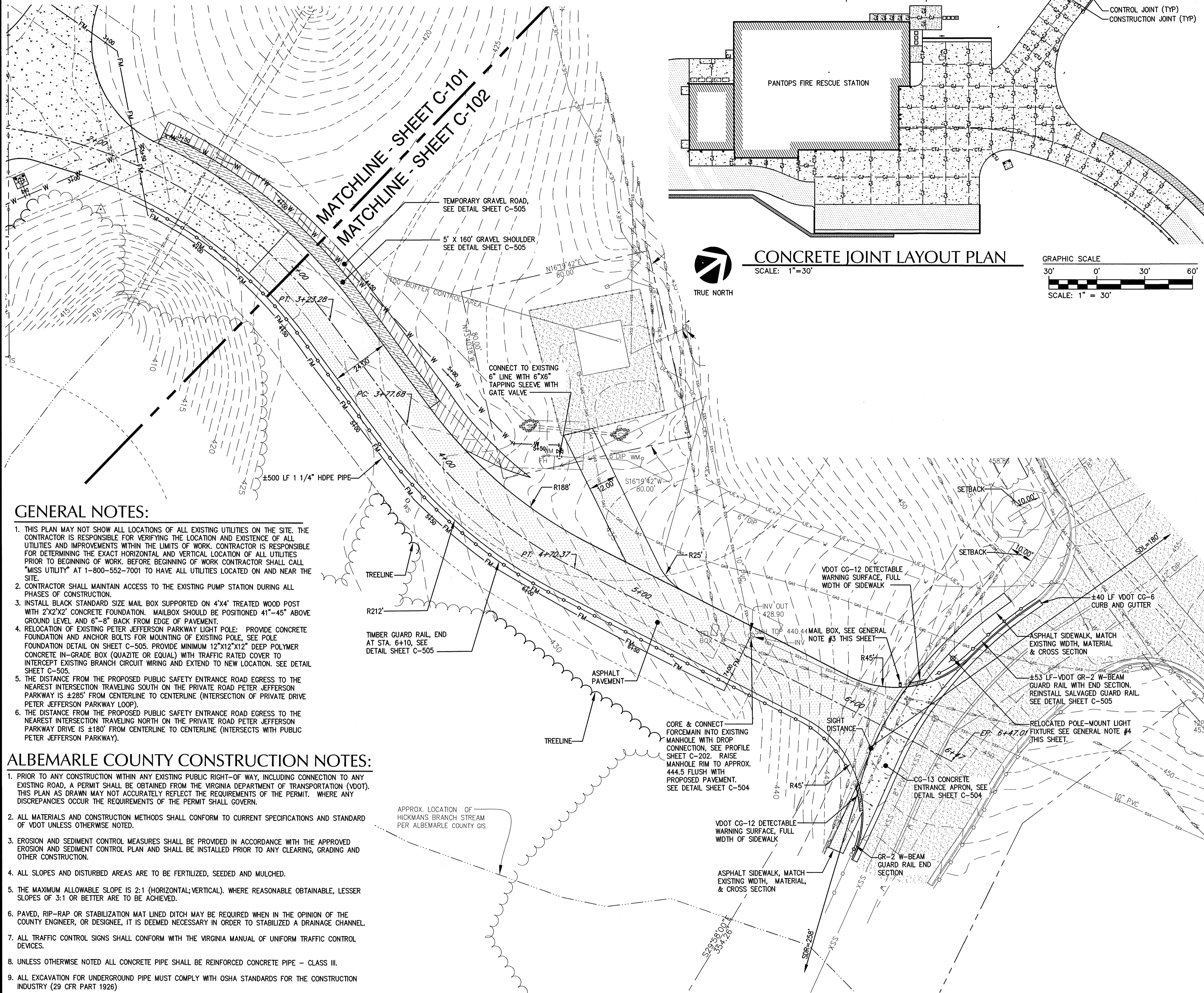


BEFORE YOU DIG, CALL MISS UTILITY AT 811 (1-800-552-7001)



GENERAL NOTES:

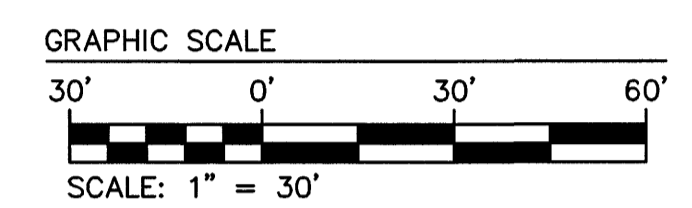
1. THIS PLAN MAY NOT SHOW ALL LOCATIONS OF ALL EXISTING UTILITIES ON THE SITE. THE CONTRACTOR IS RESPONSIBLE FOR VERIFYING THE LOCATION AND EXISTENCE OF ALL UTILITIES AND IMPROVEMENTS WITHIN THE LIMITS OF WORK. CONTRACTOR IS RESPONSIBLE FOR DETERMINING THE EXACT HORIZONTAL AND VERTICAL LOCATION OF ALL UTILITIES PRIOR TO BEGINNING OF WORK. BEFORE BEGINNING OF WORK CONTRACTOR SHALL CALL "MISS UTILITY" AT 1-800-552-7001 TO HAVE ALL UTILITIES LOCATED ON AND NEAR THE SITE.
2. CONTRACTOR SHALL MAINTAIN ACCESS TO THE EXISTING PUMP STATION DURING ALL PHASES OF CONSTRUCTION.
3. INSTALL BLACK STANDARD SIZE MAIL BOX SUPPORTED ON 4'x4' TREATED WOOD POST WITH 2'x2'x2' CONCRETE FOUNDATION. MAILBOX SHOULD BE POSITIONED 41"-45" ABOVE GROUND LEVEL AND 6"-8" BACK FROM EDGE OF PAVEMENT.
4. RELOCATION OF EXISTING PETER JEFFERSON PARKWAY LIGHT POLE: PROVIDE CONCRETE FOUNDATION AND ANCHOR BOLTS FOR MOUNTING OF EXISTING POLE, SEE POLE FOUNDATION DETAIL ON SHEET C-505. PROVIDE MINIMUM 12"x12"x12" DEEP POLYMER CONCRETE IN-GRADE BOX (QUAZITE OR EQUAL) WITH TRAFFIC RATED COVER TO INTERCEPT EXISTING BRANCH CIRCUIT WIRING AND EXTEND TO NEW LOCATION. SEE DETAIL SHEET C-505.
5. THE DISTANCE FROM THE PROPOSED PUBLIC SAFETY ENTRANCE ROAD EGRESS TO THE NEAREST INTERSECTION TRAVELING SOUTH ON THE PRIVATE ROAD PETER JEFFERSON PARKWAY IS ±285' FROM CENTERLINE TO CENTERLINE (INTERSECTION OF PRIVATE DRIVE PETER JEFFERSON PARKWAY LOOP).
6. THE DISTANCE FROM THE PROPOSED PUBLIC SAFETY ENTRANCE ROAD EGRESS TO THE NEAREST INTERSECTION TRAVELING NORTH ON THE PRIVATE ROAD PETER JEFFERSON PARKWAY DRIVE IS ±180' FROM CENTERLINE TO CENTERLINE (INTERSECTS WITH PUBLIC PETER JEFFERSON PARKWAY).

ALBEMARLE COUNTY CONSTRUCTION NOTES:

1. PRIOR TO ANY CONSTRUCTION WITHIN ANY EXISTING PUBLIC RIGHT-OF-WAY, INCLUDING CONNECTION TO ANY EXISTING ROAD, A PERMIT SHALL BE OBTAINED FROM THE VIRGINIA DEPARTMENT OF TRANSPORTATION (VDOT). THIS PLAN AS DRAWN MAY NOT ACCURATELY REFLECT THE REQUIREMENTS OF THE PERMIT. WHERE ANY DISCREPANCIES OCCUR THE REQUIREMENTS OF THE PERMIT SHALL GOVERN.
2. ALL MATERIALS AND CONSTRUCTION METHODS SHALL CONFORM TO CURRENT SPECIFICATIONS AND STANDARD OF VDOT UNLESS OTHERWISE NOTED.
3. EROSION AND SEDIMENT CONTROL MEASURES SHALL BE PROVIDED IN ACCORDANCE WITH THE APPROVED EROSION AND SEDIMENT CONTROL PLAN AND SHALL BE INSTALLED PRIOR TO ANY CLEARING, GRADING AND OTHER CONSTRUCTION.
4. ALL SLOPES AND DISTURBED AREAS ARE TO BE FERTILIZED, SEEDED AND MULCHED.
5. THE MAXIMUM ALLOWABLE SLOPE IS 2:1 (HORIZONTAL:VERTICAL). WHERE REASONABLE OBTAINABLE, LESSER SLOPES OF 3:1 OR BETTER ARE TO BE ACHIEVED.
6. PAVED, RIP-RAP OR STABILIZATION MAT LINED DITCH MAY BE REQUIRED WHEN IN THE OPINION OF THE COUNTY ENGINEER, OR DESIGNEE, IT IS DEEMED NECESSARY IN ORDER TO STABILIZED A DRAINAGE CHANNEL.
7. ALL TRAFFIC CONTROL SIGNS SHALL CONFORM WITH THE VIRGINIA MANUAL OF UNIFORM TRAFFIC CONTROL DEVICES.
8. UNLESS OTHERWISE NOTED ALL CONCRETE PIPE SHALL BE REINFORCED CONCRETE PIPE - CLASS III.
9. ALL EXCAVATION FOR UNDERGROUND PIPE MUST COMPLY WITH OSHA STANDARDS FOR THE CONSTRUCTION INDUSTRY (29 CFR PART 1926)

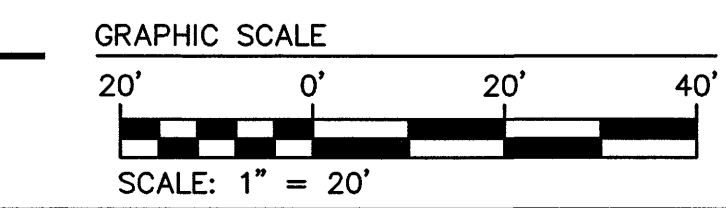
SITE & UTILITY PLAN
SCALE: 1"=20'
TRUE NORTH

CONCRETE JOINT LAYOUT PLAN
SCALE: 1"=30'
TRUE NORTH



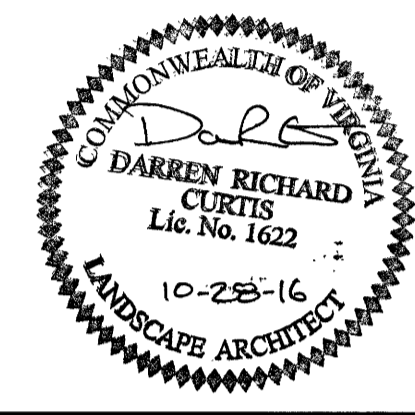
LEGEND

EXISTING:	
CMP	CORRUGATED METAL PIPE
CO	CLEAN OUT
CONC	CONCRETE
CPP	CORRUGATED PLASTIC PIPE
DIP	DUCTILE IRON PIPE
EM	ELECTRIC METER
FH	FIRE HYDRANT
FM	FORCE MAIN
FOC	FIBER OPTIC CABLE
GM	GAS METER
GNDL	GROUND LIGHT
IF	IRON FOUND
IS	IRON SET
LP	LIGHT POLE
PVC	POLYVINYL CHLORIDE PIPE
RCP	REINFORCED CONCRETE PIPE
SMH	SANITARY SEWER MANHOLE
TC	TOP OF CURB
WM	WATER METER
WV	WATER VALVE
6TR10	TREE DIA. IN INCHES/TREE/CANOPY DIA. IN FEET
x 419.68	SPOT ELEVATION
---	PROPERTY BOUNDARY
---	UTILITY EASEMENT
---	CONTOURS
---	STORMWATER PIPE
---	SANITARY LINE
---	SANITARY MANHOLE
---	GAS LINE
---	COMMUNICATIONS LINE (UNDERGROUND)
---	ELECTRICAL LINE (UNDERGROUND)
---	WATER LINE
---	GUARD RAIL
---	ASPHALT PAVEMENT
---	CONCRETE PAVEMENT
---	TREE LINE
---	TREE
---	SIGN
---	LIGHT
---	HANDICAPPED ACCESSIBLE SPACE
---	PARKING SPACE COUNTRY
---	TEMPORARY GRAVEL ROAD
---	ASPHALT PAVEMENT
---	WIRE REINFORCED CONCRETE PAVEMENT
---	HEAVY DUTY CONCRETE PAVEMENT
---	GRAVEL SHOULDER
---	UTILITY EASEMENT
---	SANITARY LINE
---	SANITARY FORCE MAIN
---	WATER LINE
---	GAS LINE
---	METAL GUARD RAIL
---	TIMBER GUARD RAIL
---	RAILING AT RETAINING WALL
---	TREE LINE
---	SIGN
---	RELOCATED STREET LIGHT
---	SDR
---	SDL



**ENGINEERS
ARCHITECTS
PLANNERS**

449 McLAWS CIRCLE
WILLIAMSBURG, VA 23185
(757) 253-0673 VOICE
(757) 253-2319 FAX
www.djginc.com



COUNTY OF ALBEMARLE

**PANTOPS
PUBLIC SAFETY
FACILITY**

IFB # 2017-11223-20

CHARLOTTESVILLE,
VIRGINIA

REVISIONS

NO.	DATE	DESCRIPTION

COMMISSION NUMBER	2160310
SCALE:	AS SHOWN
DESIGNED:	DJG
DRAWN:	DRC/MC
CHECKED:	DFB
DATE:	10.28.2016

THIS DOCUMENT CONTAINS INFORMATION PROPRIETARY TO DJG, INC. AND IS FURNISHED IN CONFIDENCE AS AN INSTRUMENT OF SERVICE FOR THE LIMITED PURPOSE OF EVALUATION, BIDDING AND REVIEW, OR CONSTRUCTION OF A SPECIFIC PROJECT. REPRODUCTION OF THIS DOCUMENT, IN WHOLE OR IN PART, OR THE MODIFICATION OF ANY DETAIL OR SECTION WITHOUT THE EXPRESS WRITTEN CONSENT OF DJG, INC. IS PROHIBITED. ALL RIGHTS RESERVED. COPYRIGHT DJG, INC. (2016)

**SITE & UTILITY
PLAN**

SHEET NUMBER
C-102
9 OF 68