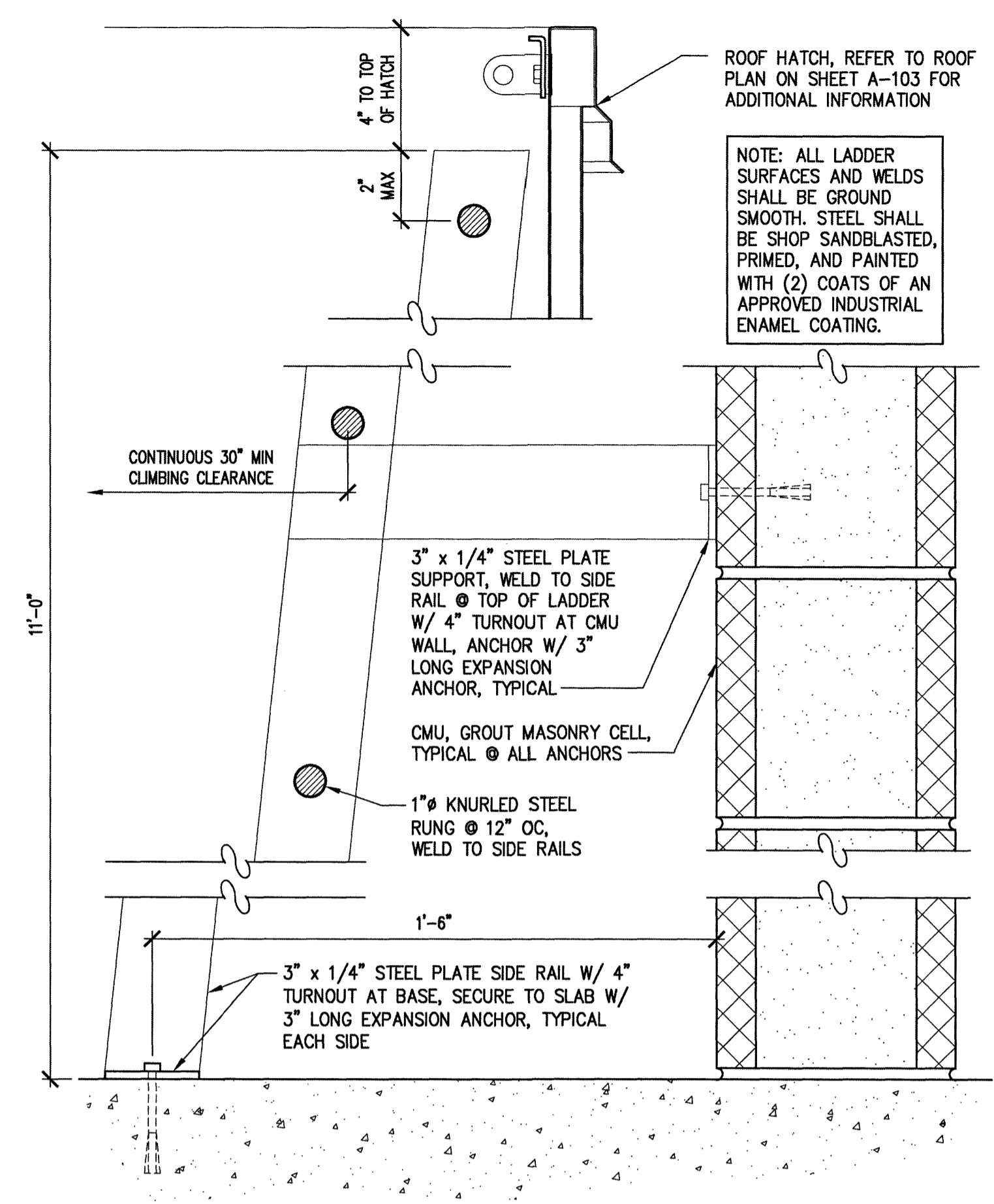
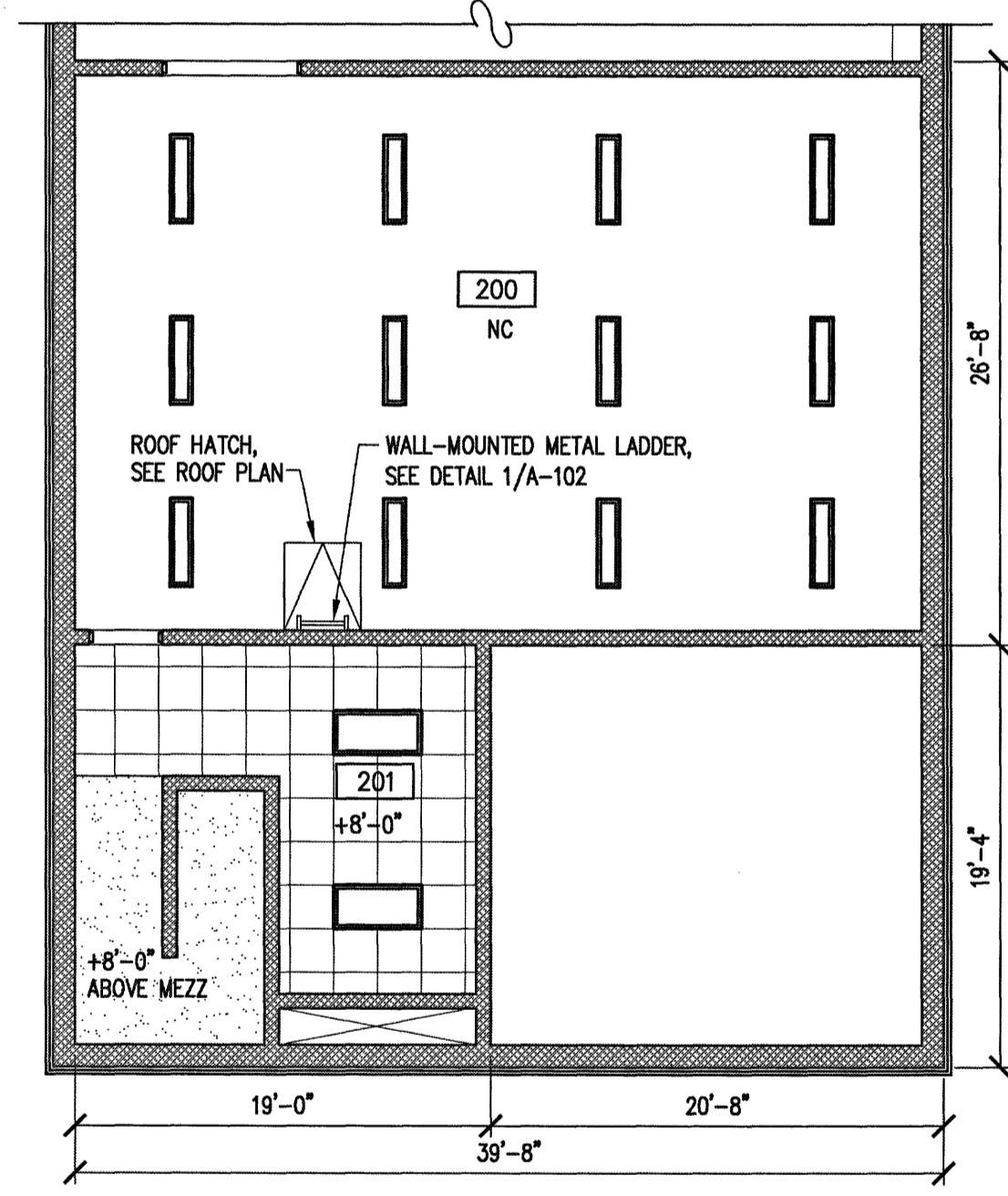


**FIRST FLOOR REFLECTED CEILING PLAN**  
SCALE: 1/8" = 1'-0"



**ROOF LADDER DETAIL**  
SCALE: 3" = 1'-0"



**MECHANICAL PLATFORM REFLECTED CEILING PLAN**  
SCALE: 1/8" = 1'-0"

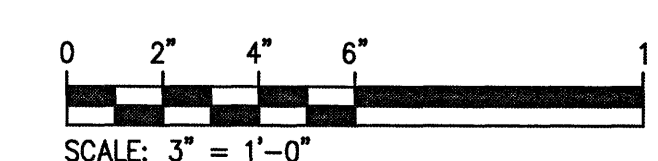
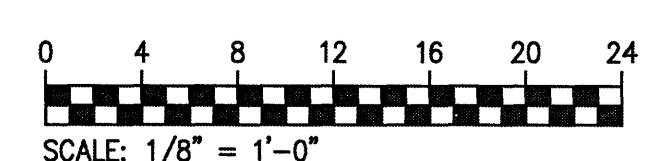


**REFLECTED CEILING PLAN SYMBOL LEGEND:**

- 1X4 RECESSED LIGHT FIXTURE, SEE ELECT DWGS
- 2'X4' RECESSED FLUORESCENT LIGHT FIXTURE, SEE ELECT DWGS
- 6" RECESSED DOWNLIGHTING FIXTURE, SEE ELECT DWGS
- SUPPLY AIR DIFFUSER, SEE MECH DWGS
- RETURN, TRANSFER, OR AIR GRILLE, SEE MECH DWGS
- FAN COIL UNITS
- EXHAUST DIFFUSER, SEE MECH DRAWINGS
- 2'X2' LAY-IN ACOUSTIC TILE CEILING SYSTEM, SEE DETAIL 1/A-503
- SUSPENDED GWB/BULKHEAD, SEE DETAIL 2/A-503, UNLESS OTHERWISE NOTED
- NC NO CEILING - EXPOSED STRUCTURE
- CEILING HEIGHT AFF
- EXIT LIGHT, SEE ELEC DRAWINGS
- OCCUPANCY SENSOR, SEE ELEC DRAWINGS
- SMOKE DETECTOR, SEE FIRE ALARM DRAWINGS

**GENERAL NOTES:**

- REFER TO SHEET A-101 FOR TYPICAL GENERAL NOTES.



**ENGINEERS  
ARCHITECTS  
PLANNERS**

449 McLAWS CIRCLE  
WILLIAMSBURG, VA 23185  
(757) 253-0873 VOICE  
(757) 253-2319 FAX  
[www.djginc.com](http://www.djginc.com)



COUNTY OF ALBEMARLE

**PANTOPS  
PUBLIC SAFETY  
FACILITY**

IFB # 2017-11223-20

CHARLOTTESVILLE,  
VIRGINIA

**REVISIONS**

NO.	DATE	DESCRIPTION

DATE	DESCRIPTION

COMMISSION NUMBER  
**2160310**

SCALE: **AS NOTED**

DESIGNED: **RTL**

DRAWN: **KAH**

CHECKED: **DFB**

DATE: **10.28.2016**

SHEET TITLE  
**REFLECTED  
CEILING PLAN  
AND DETAILS**

SHEET NUMBER  
**A-102**  
23 OF 68