

**GENERAL NOTES:**

1. CONTRACTOR SHALL VERIFY ALL EXISTING DIMENSIONS AND CONDITIONS IN FIELD PRIOR TO STARTING WORK. VARIANCES SHALL BE BROUGHT TO THE ATTENTION OF THE PROJECT MANAGER IN WRITING PRIOR TO COMMENCING WORK OR ORDERING MATERIALS FOR THAT AREA. VERIFY EXISTING UTILITIES W/ OWNER AND SCHEDULE ALL UTILITY OUTAGES REQUIRED FOR COMPLETION OF THE WORK FOR OWNER'S APPROVAL.
2. ALL FLOOR PLAN DIMENSIONS NOTED AS "CLEAR" SHALL REFER TO THE DISTANCE BETWEEN FINISHED SURFACES. ALL DIMENSIONS TO EXTERIOR WALLS, MASONRY, OR CONCRETE, SHALL BE TO FACE OF MATERIAL. ALL OTHER DIMENSIONS ARE TO FACE OF STUD. TYPICAL, UNLESS OTHERWISE NOTED.
3. THE ARCHITECT/ENGINEER RESERVES THE RIGHT TO EXAMINE ANY WORK PERFORMED ON THIS PROJECT AT ANY TIME TO DETERMINE THE CONFORMANCE WITH THE REQUIREMENTS OF THE CONTRACT DOCUMENTS AS INTENDED AND INTERPRETED BY THE ARCHITECT/ENGINEER.
4. WHERE DISSIMILAR METALS ARE IN DIRECT PHYSICAL CONTACT, PROVIDE ADEQUATE SEPARATION, TO PREVENT GALVANIC ACTION.
5. REFER TO SHEET A-401 AND A-402 FOR INTERIOR ELEVATION INFORMATION.
6. REFER TO SHEET A-602 FOR DOOR AND WINDOW INFORMATION.
7. REFER TO SHEET A-601 FOR FINISH SCHEDULE INFORMATION.
8. REFER TO SHEET A-304 FOR WALL TYPES.
9. FURNITURE LAYOUTS SHOWN ARE NOT IN CONTRACT, TYPICAL UNLESS OTHERWISE NOTED.
10. REFER TO SHEET A-301 FOR ENLARGED PARTIAL STAIR PLAN.

**KEYED NOTES:**

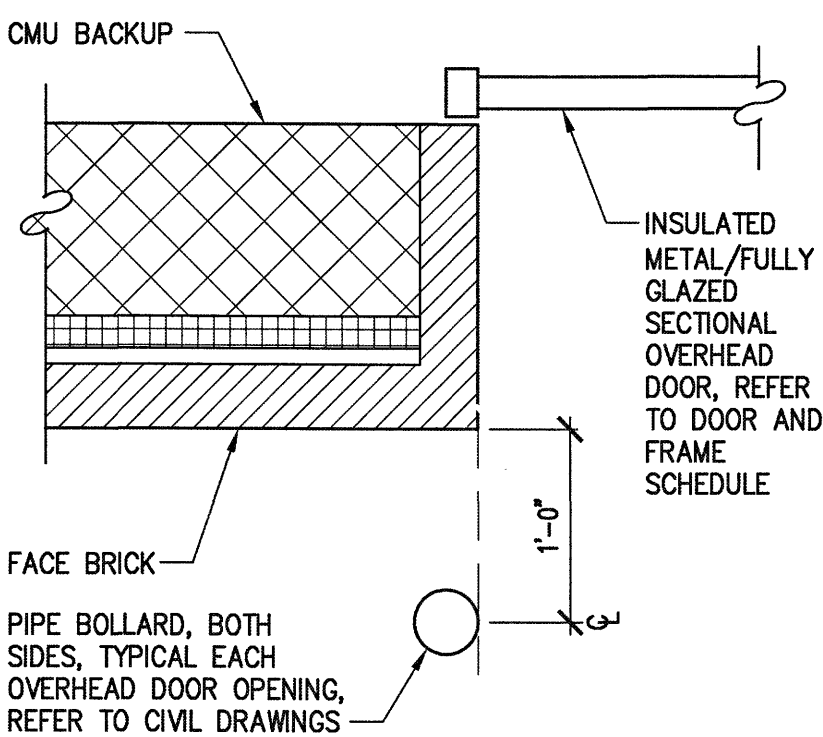
- 1 4'-0" HIGH x 12'-0" WIDE DRY-ERASE BOARD, CFCL. MOUNT TOP @ 7'-6" AFF, CENTER ON WALL.
- 2 PROVIDE FURRING ON WALLS INSIDE OFFICE. SEE WALL SECTION 3/A-302.
- 3 SINGLE TIER METAL LOCKERS, SEE INTERIOR ELEVATIONS.
- 4 TURN OUT GEAR LOCKERS, CFCL, SEE INTERIOR ELEVATIONS.
- 5 PROVIDE (5) SHELVES HIGH - 3/4" HARDWOOD AND NOSING. PROVIDE GUSSETS @ 3'-0" OC. SPACE SHELVES 1'-4" OC VERTICALLY.
- 6 BOTH SIDES OF WALL - CERAMIC TILE - BRICK PATTERN, SEE FINISH SCHEDULE.
- 7 WALL MOUNTED FDC
- 8 ICE MACHINE, OFCI, SEE INTERIOR ELEVATIONS.
- 9 SCBA COMPRESSOR, OFCI
- 10 COMMERCIAL EXTRACTOR, OFCI, SEE INTERIOR ELEVATIONS.
- 11 PIPE BOLLARD, SEE CIVIL DRAWINGS FOR ADDITIONAL INFORMATION. REFER TO DETAIL 1/A-101 FOR BOLLARD LOCATION @ OVERHEAD DOOR, TYPICAL.
- 12 FIXED BENCH, 1'-0" X 5'-0" SEE SPECIFICATIONS.
- 13 FIXED BENCH, 1'-0" X 8'-0" SEE SPECIFICATIONS.
- 14 WALL-MOUNTED METAL ROOF ACCESS LADDER, REFER TO DETAIL 1/A-102 FOR ADDITIONAL INFORMATION.
- 15 ADDITIVE BID ITEM 7: 18"D X 48"W (5 SHELVES HIGH) ADJUSTABLE STEEL SHELVING WITH POWDER COATED FINISH. POST SHALL BE 14 GAUGE AND SHELVES SHALL BE 16 GAUGE, SHELF CAPACITY MINIMUM 2,500 LBS.
- 16 ADDITIVE BID ITEM 7: 18"D X 72"W (5 SHELVES HIGH) ADJUSTABLE STEEL SHELVING WITH POWDER COATED FINISH. POST SHALL BE 14 GAUGE AND SHELVES SHALL BE 16 GAUGE, SHELF CAPACITY MINIMUM 2,500 LBS.
- 17 PROVIDE 1 HOUR RATED HORIZONTAL ASSEMBLY UL D780 FOR FLOOR/CEILING ABOVE AT HATCHED AREA.
- 18 CONTINUE METAL FURRING AND GWB AT WINDOW OPENING. REFER TO WINDOW DETAILS ON SHEET A-502 FOR ADDITIONAL INFORMATION.

**FLOOR PLAN SYMBOLS LEGEND:**

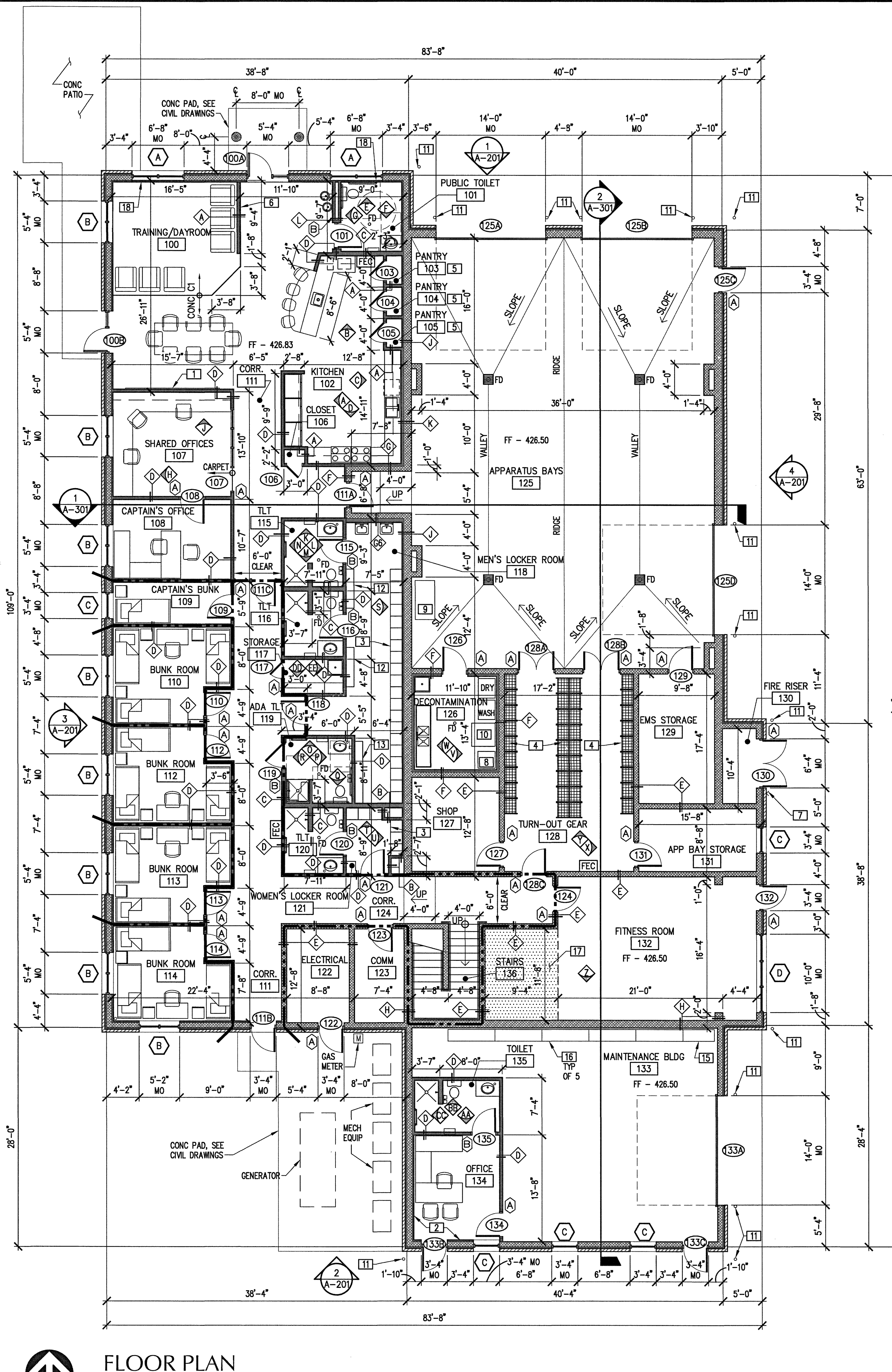
- 1 HOUR RATED FIRE PARTITION
- ⊗ SHOWER BED, REFER TO DETAIL 3/A-402
- FEC FIRE EXTINGUISHER CABINET W/ CLASS A FIRE EXTINGUISHER

SIGNAGE LEGEND		
SIGN TYPE	MOUNTING HEIGHT	SIGNAGE TEXT
(A)	60" TO CENTER NEXT TO LATCH SIDE OF DOOR	(ROOM NAME & NO.), BRAILLE
(B)	60" TO CENTER NEXT TO LATCH SIDE OF DOOR	'MEN', (OR) 'WOMEN', PICTOGRAPH, HC SYMBOL (WHERE OCCURS), BRAILLE

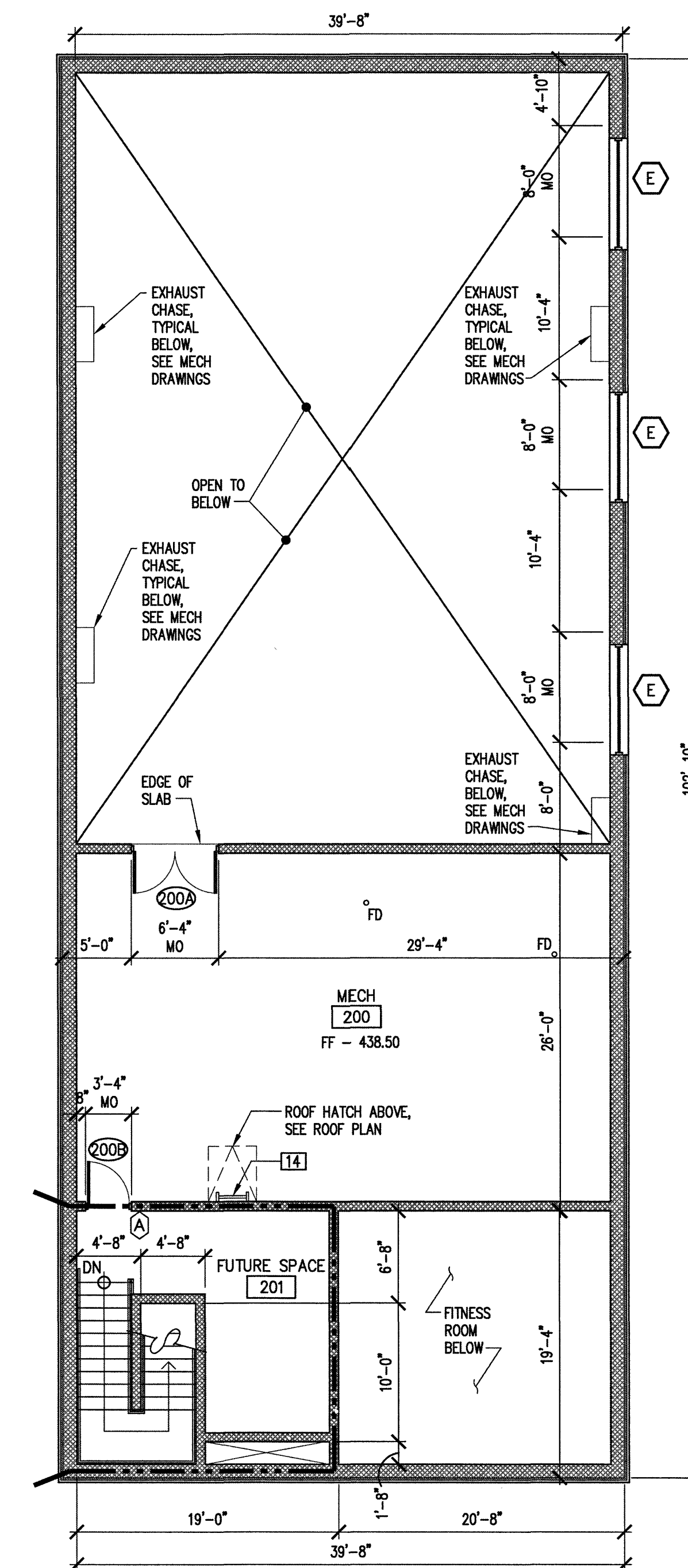
- SIGNAGE NOTES:**
- ALL SIGNS SHALL BE ADA COMPLIANT.
  - COORDINATE THE ROOM NAMES ON SIGNAGE WITH OWNER.
  - ALL SIGNS ARE 8" WIDE, HEIGHTS MAY VARY DEPENDING ON TEXT.
  - SEE SPECIFICATIONS FOR SIGNAGE INFORMATION.
  - MOUNT EDGE OF SIGN 3" FROM FRAME OF DOOR IF POSSIBLE.
  - DO NOT ABBREVIATE ROOM NAMES, SUBMIT SCHEDULE TO OWNER FOR APPROVAL OF ROOM NAMES AND LOCATIONS.



**PIPE BOLLARD DETAIL**  
SCALE: 1" = 1'-0"

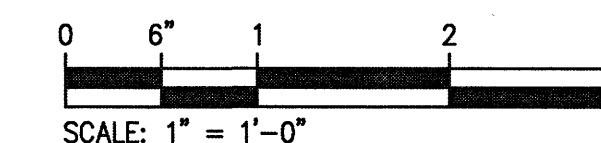
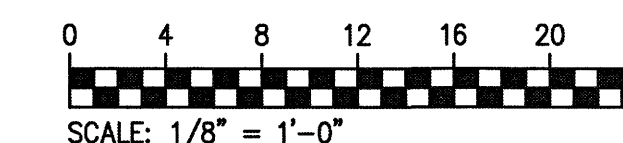


**FLOOR PLAN**  
SCALE: 1/8" = 1'-0"



**MECHANICAL PLATFORM PLAN**  
SCALE: 1/8" = 1'-0"

PROJECT NORTH



**ENGINEERS  
ARCHITECTS  
PLANNERS**

449 McLAWS CIRCLE  
WILLIAMSBURG, VA 23185  
(757) 253-0673 VOICE  
(757) 253-2319 FAX

www.djginc.com



COUNTY OF ALBEMARLE

**PANTOPS  
PUBLIC SAFETY  
FACILITY**

IFB # 2017-11223-20

CHARLOTTESVILLE,  
VIRGINIA

**REVISIONS**

NO.	DATE	DESCRIPTION

COMMISSION NUMBER  
**2160310**

SCALE: **AS NOTED**  
DESIGNED: **RTL**  
DRAWN: **RTL**  
CHECKED: **DFB**  
DATE: **10.28.2016**

THIS DOCUMENT CONTAINS INFORMATION PROPRIETARY TO DJG, INC. AND IS FURNISHED IN CONFIDENCE AS AN INSTRUMENT OF SERVICE FOR THE LIMITED PURPOSE OF EVALUATION, BIDDING AND REVIEW, OR CONSTRUCTION OF A SPECIFIC PROJECT. REPRODUCTION OF THIS DOCUMENT, IN WHOLE OR IN PART, OR THE MODIFICATION OF ANY DETAIL OR DESIGN WITHOUT THE EXPRESS WRITTEN CONSENT OF DJG, INC. IS PROHIBITED. ALL RIGHTS RESERVED. COPYRIGHT DJG, INC. (C) 2016

SHEET TITLE

**FLOOR PLANS**

SHEET NUMBER

**A-101**

22 OF 68