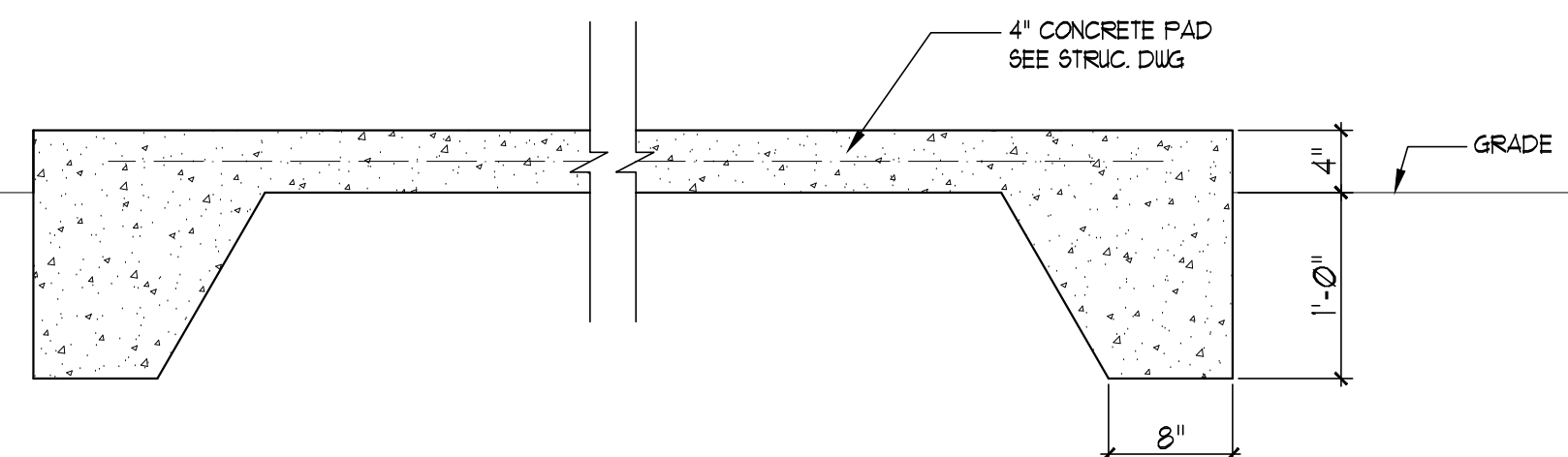
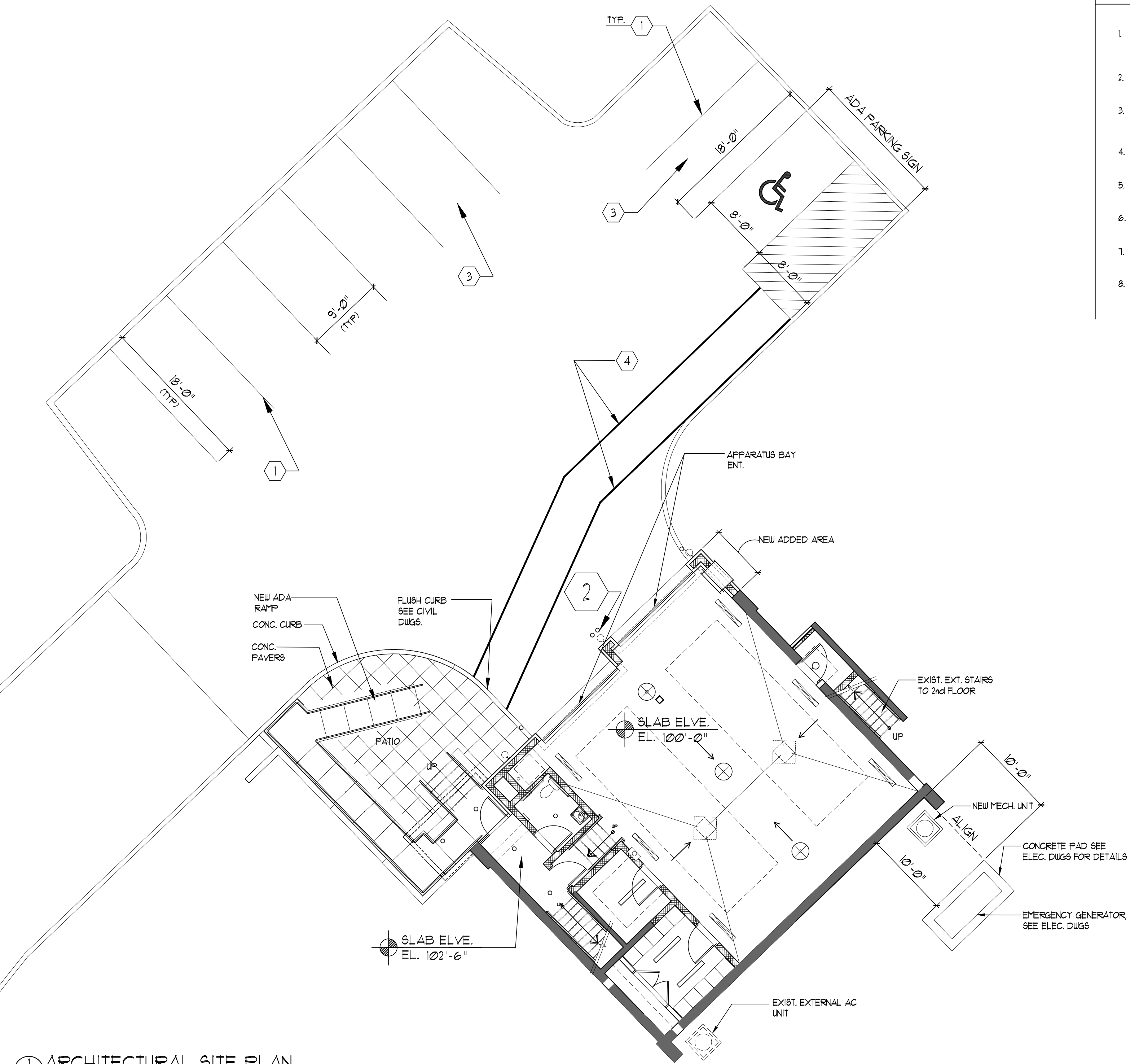


2 BOLLARD SECTION
AS1 SCALE: 1/4"=1'-0"

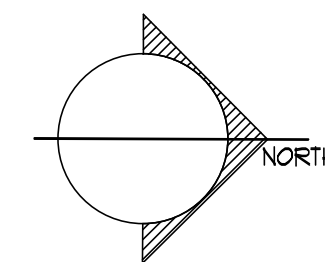


3 CONCRETE PAD SECTION
AS1 SCALE: 1/4"=1'-0"

NOTE: GENERATOR PAD SIZE PER MANUFACTURER'S REQUIREMENTS



1 ARCHITECTURAL SITE PLAN
AS1 SCALE: 1/8"=1'-0"



KEY NOTES:

- 1 PAINTED PARKING STRIPE ON PAVEMENT SURFACE, TYP.
- 2 BOLLARDS SEE DETAIL 1 / AS1
- 3 ACCESSIBLE PARKING SPACES, SIGNAGE, LOGOS, WHEEL STOPS & ACCESS AISLES MUST MEET ALL ACCESSIBILITY REQUIREMENTS - PROVIDE SPACES IN SIZE, QUANTITY & LOCATIONS REQ'D BY ACCESSIBILITY AND BY APPLICABLE CODES AS DETERMINED BY LOCAL JURISDICTION. PROVIDE A MAXIMUM SLOPE IN EITHER DIRECTION OF 1:48 (1:64 RECOMMENDED). REFER TO HADG FOR FURTHER INFORMATION.
- 4 2'-4" WIDE WHITE STRIPES FOR ADA PATH

GENERAL NOTES:

- 1. BLDG. LIMITATIONS, AREA REQUIREMENTS, & SETBACKS ARE TO CONFORM TO APPLICABLE CODES AS DETERMINED BY LOCAL JURISDICTION
- 2. PROVIDE FIRE ACCESS LANE AS REQUIRED BY APPLICABLE CODES AS DETERMINED BY LOCAL JURISDICTION.
- 3. PROVIDED APPROPRIATE NUMBER OF CURB CUTS AND DRIVEWAY ACCESS WIDTHS TO SITE AS REQUIRED BY APPLICABLE CODES AS DETERMINED BY LOCAL JURISDICTION.
- 4. TYP. PARKING SPACE SIZES SHALL BE AS REQ'D BY APPLICABLE CODES AS DETERMINED BY LOCAL JURISDICTION. 9'x18' MIN.
- 5. REFER TO BRAND'S SIGNAGE STANDARDS FOR ADDITIONAL INFORMATION AND PRECISE SIGNAGE REQUIREMENTS.
- 6. ALL SITE DIMENSIONS ARE MINIMUM REQUIREMENTS. COMPLY WITH APPLICABLE CODES AS DETERMINED BY LOCAL JURISDICTION.
- 7. PROVIDE AN ACCESSIBLE MEANS OF TRAVEL TO SITE PROPERTY LINE THAT MEETS ALL ACCESSIBILITY REQUIREMENTS.
- 8. PARKING LOT STRIPES MUST BE WHITE, EXCEPT WHERE OTHER COLORS ARE REQUIRED FOR FIRE LANES & NO PARKING ZONES.



ARCHITECT
ZHA ARCHITECTS

4801 GREENBERRY DRIVE, SUITE 100, FARMERSVILLE, VA 22039
PHONE: (703) 232-4900 FAX: (703) 232-4911

CIVIL
TIMMONS GROUP, INC.
919 2ND STREET S.E.
CHARLOTTESVILLE, VA 22902
PHONE: (434) 295-5624
FAX: (434) 295-8317

STRUCTURAL
EHLERT/ BRYAN INC.
1451 DOLLY MADISON BLVD. SUITE #220
MCLEAN, VA 22101
PHONE: (703) 827 9552

MEP/ ELECT./ PLUMBING
AJ ENGINEERS, INC.
4304 EVERGREEN LANE, SUITE # 204
ANNANDALE, VA 22003
PHONE: (703) 914 1416

THIS DRAWING & THE DESIGN SHOWN THEREON ARE THE PROPERTY OF ZIVIC & HURDLE ARCHITECTS. THE REPRODUCTION, COPYING, OR USE OF THIS DRAWING W/O THEIR SPECIFIC WRITTEN CONSENT IS PROHIBITED & ANY INFRINGEMENT WILL BE SUBJECT TO LEGAL ACTION.

REVISION	DATE	DESCRIPTION
	09/30/2016	BID / PERMIT SET
	06/03/2016	DESIGN DEVELOPMENT
	05/06/2016	SCHEMATIC DESIGN

DESIGNED BY: _____ CHECKED BY: _____
DRAWN BY: _____ APPROVED BY: _____



RESCUE 8 STATION
ALBEMARLE COUNTY, VA

3045 BERKMAR DR.
CHARLOTTESVILLE, VA
ZHA PROJECT NUMBER: 15115.00



SHEET TITLE:
SITE PLAN

SCALE:
SHEET NO: AS.1

ISSUE DATE:

