

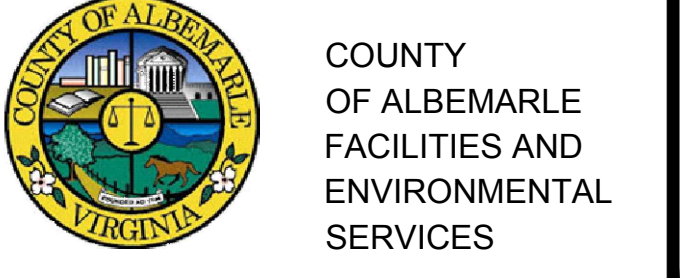
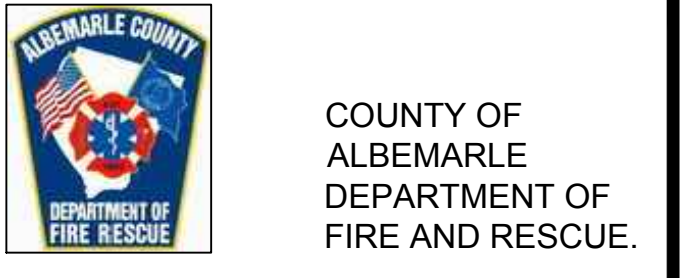
CIVIL
TIMMONS GROUP, INC.
919 2ND STREET S.E.
CHARLOTTESVILLE, VA 22902
PHONE: (434) 295-5624
FAX: (434) 295-8317

STRUCTURAL
EHLERT/ BRYAN INC.
1451 DOLLY MADISON BLVD. SUITE #220
McLEAN, VA 22101
PHONE: (703) 827 9552

MEP/ ELECT./ PLUMBING
AJ ENGINEERS, INC.
4304 EVERGREEN LANE, SUITE # 204
ANNANDALE, VA 22003
PHONE: (703) 914 1416

THIS DRAWING & THE DESIGN SHOWN THEREON ARE THE PROPERTY OF ZVIC & HURDLE ARCHITECTS. THE REPRODUCTION, COPYING, OR USE OF THIS DRAWING W/O THEIR SPECIFIC WRITTEN CONSENT IS PROHIBITED & ANY INFRINGEMENT WILL BE SUBJECT TO LEGAL ACTION.

09/30/2016	BID / PERMIT SET	
06/03/2016	DESIGN DEVELOPMENT	
05/06/2016	SCHEMATIC DESIGN	
REVISION	DATE	DESCRIPTION
DESIGNED BY:	CHECKED BY:	APPROVED BY:
DRAWN BY:		



RESCUE 8 STATION
ALBEMARLE COUNTY, VA

3045 BERKMAR DR.
CHARLOTTESVILLE, VA
ZHA PROJECT NUMBER: 15115.00

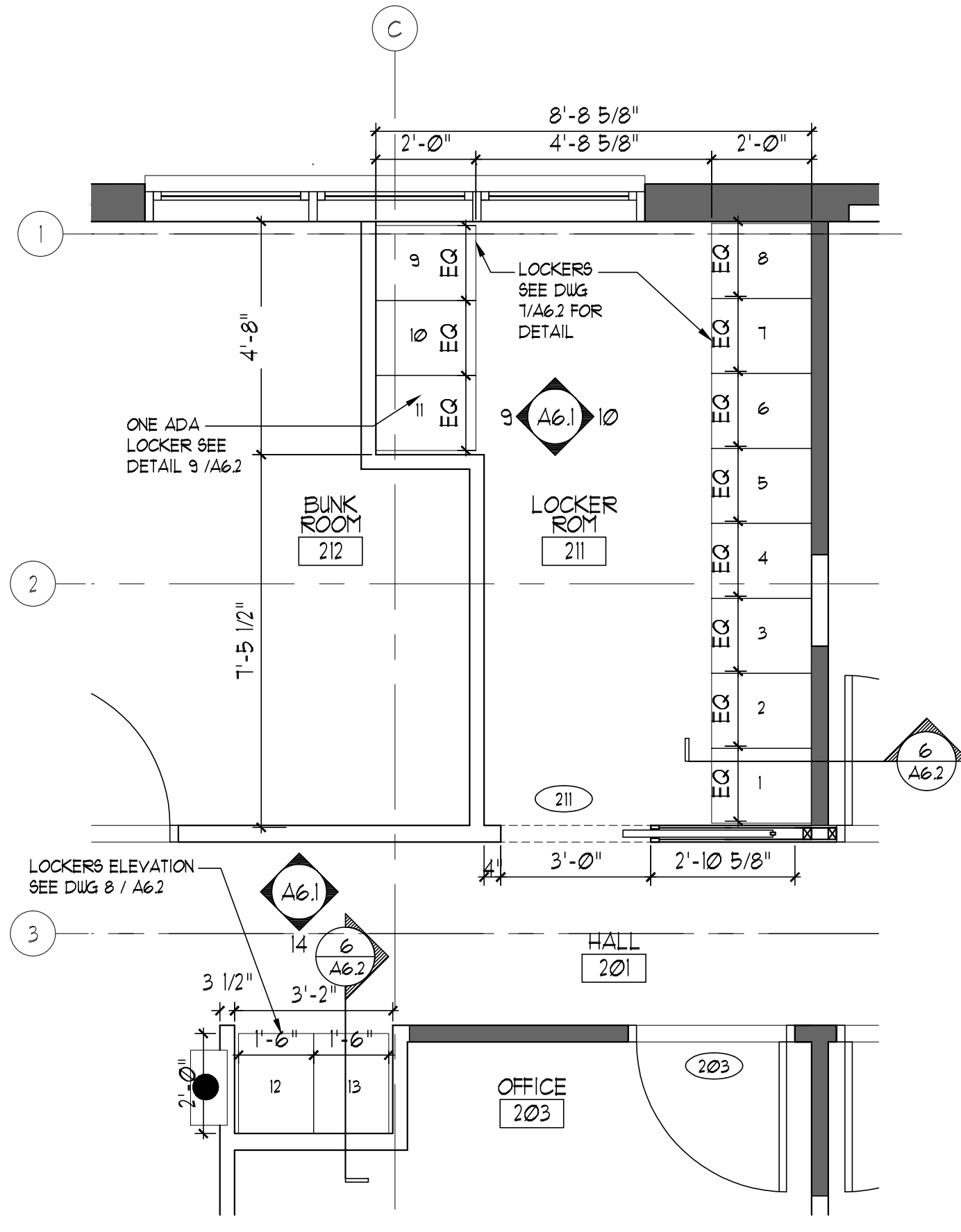
STAMP AND SEAL:

SHEET TITLE:
ENLARGED FLOOR PLANS

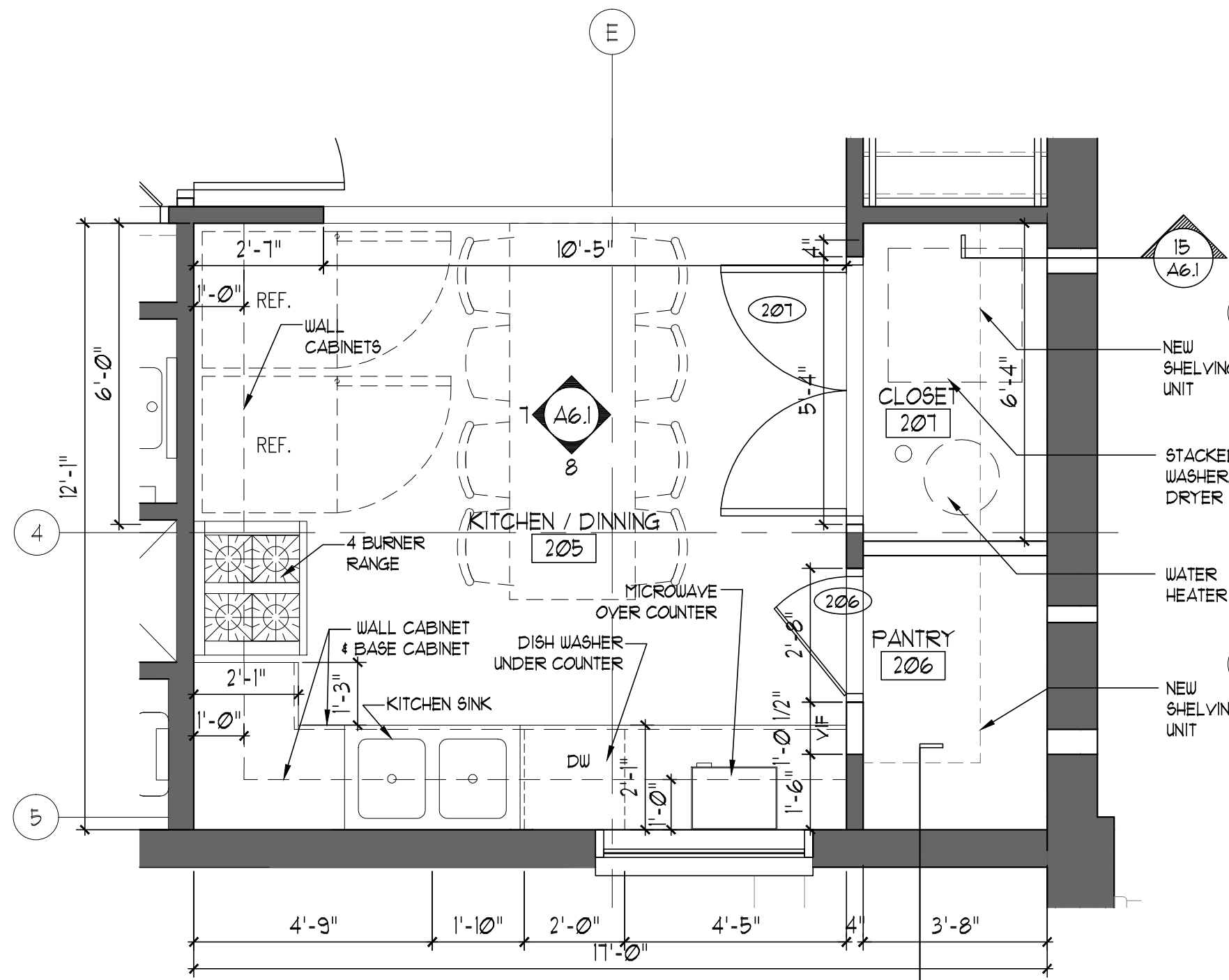
SCALE:

SHEET NO: A13

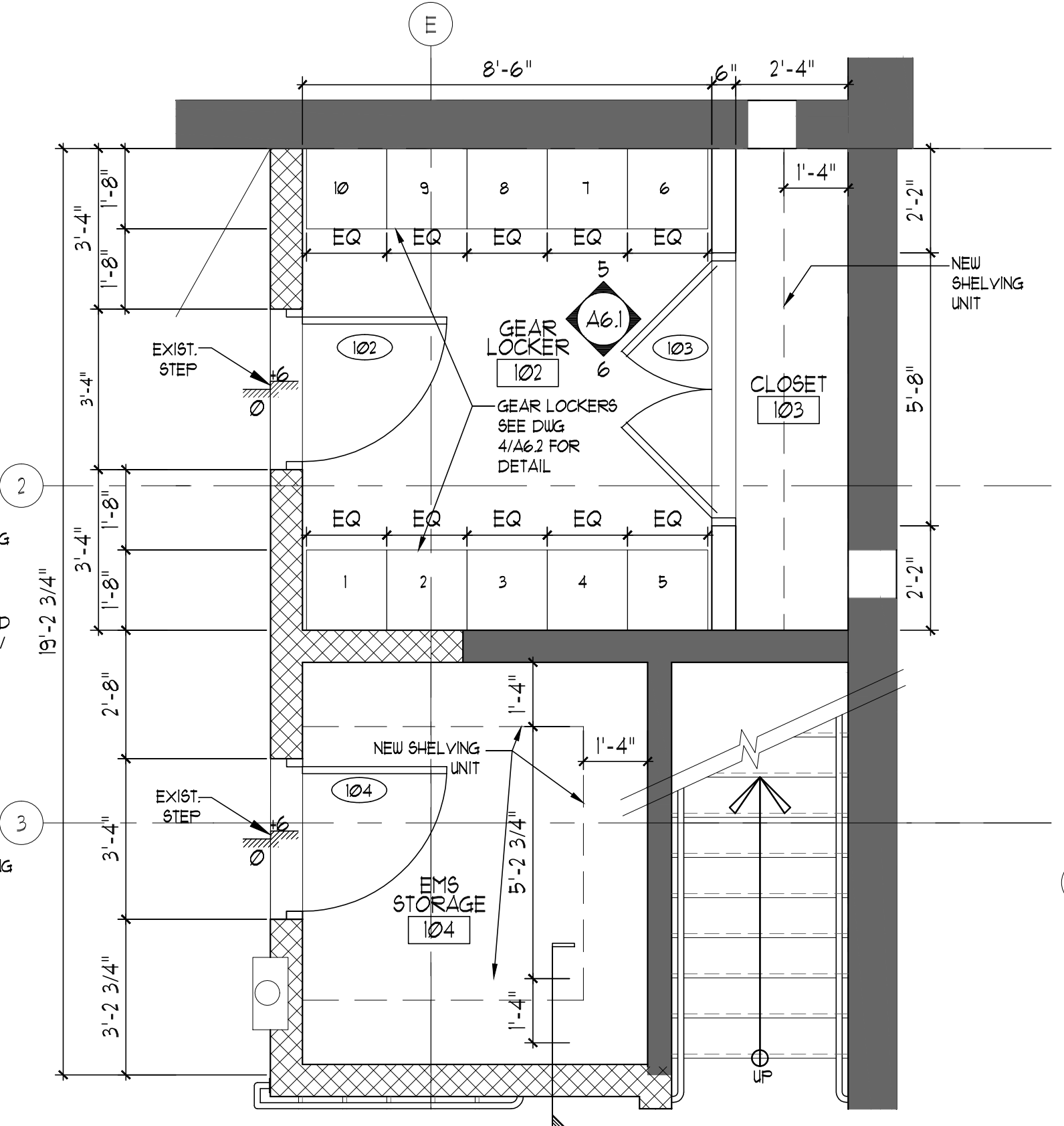
ISSUE DATE:



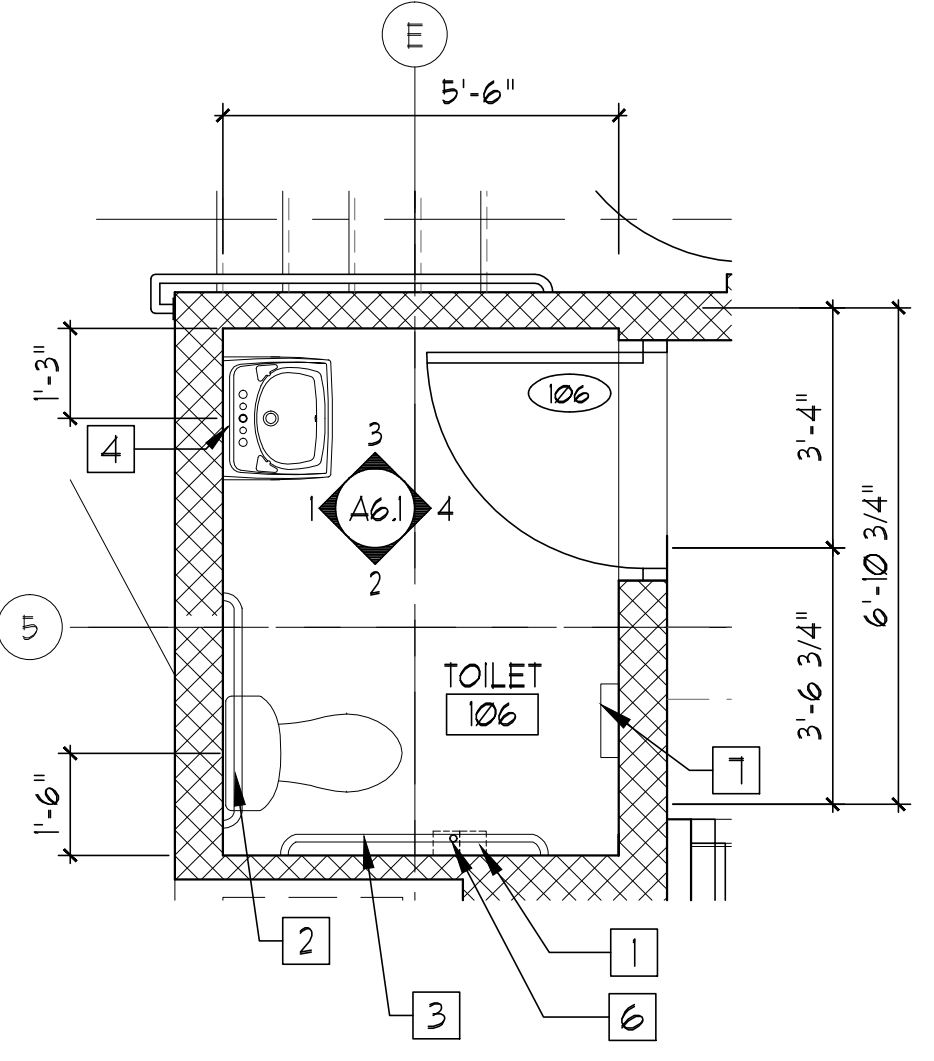
4 PLAN @ LOCKER ROOM
A13 SCALE: 3/8"=1'-0"



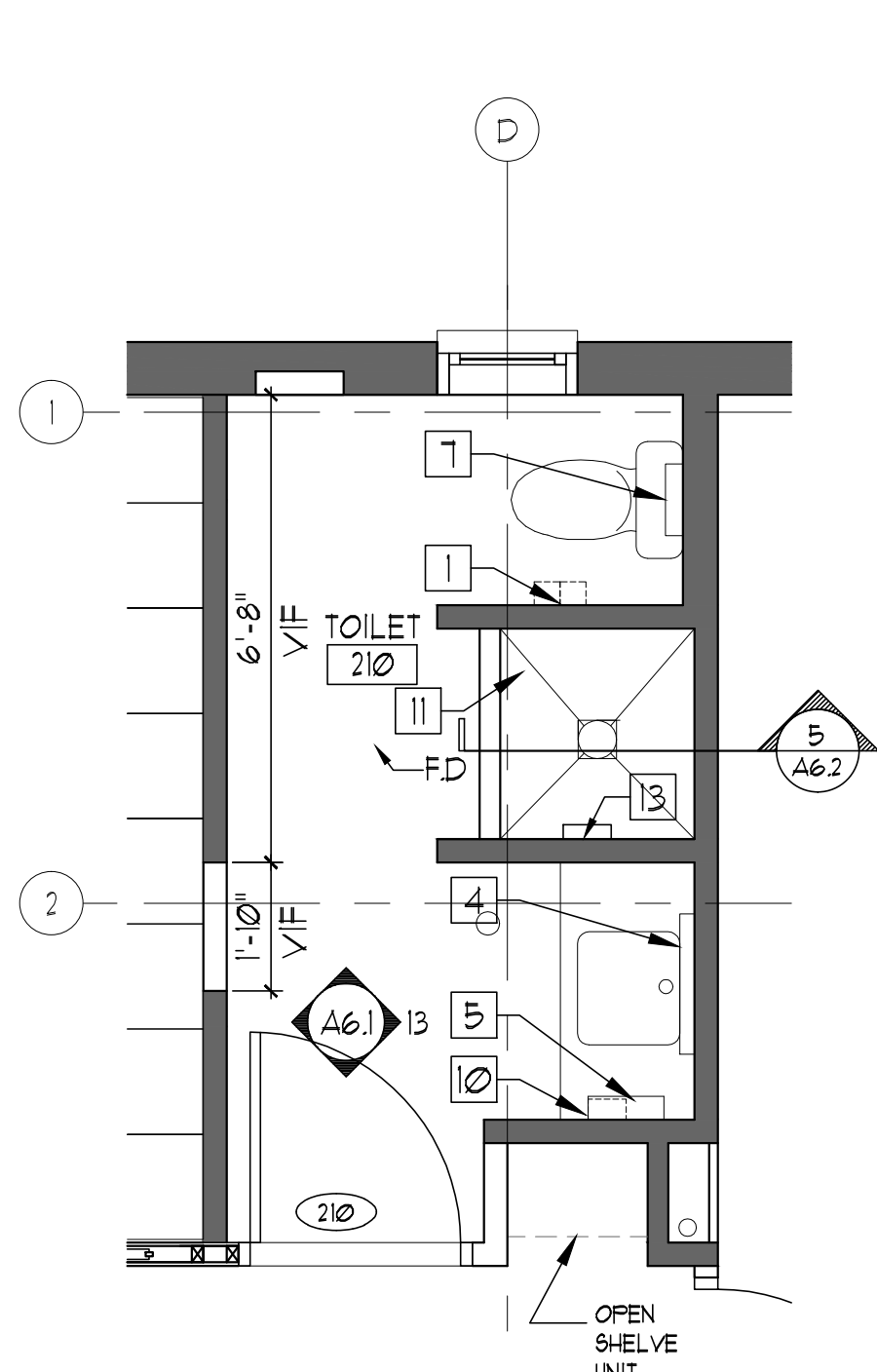
3 PLAN @ KITCHEN / DINING
A13 SCALE: 3/8"=1'-0"



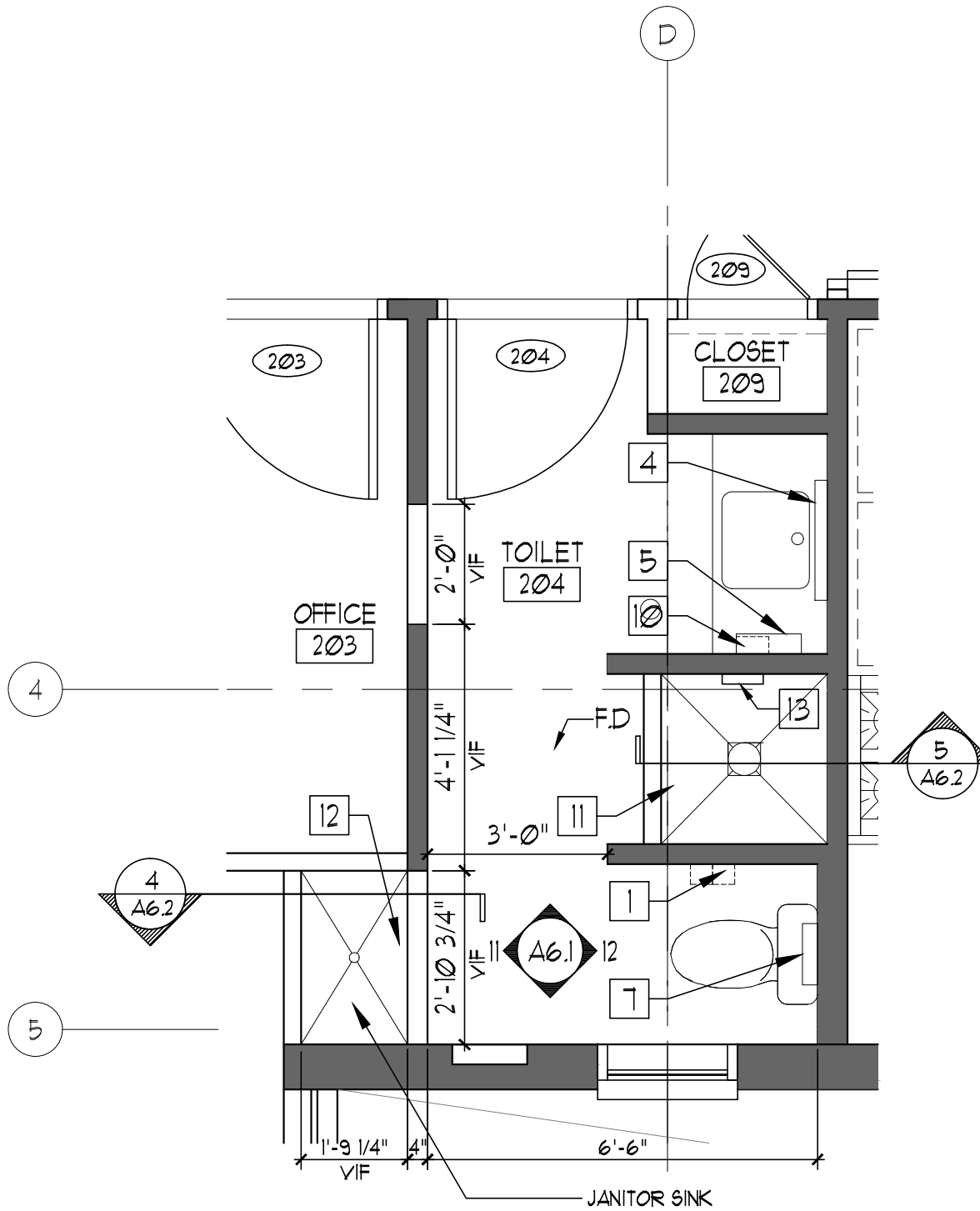
2 PLAN @ GEAR LOCKER & EMS STORAGE
A13 SCALE: 3/8"=1'-0"



1 PLAN @ TOILET
A13 SCALE: 3/8"=1'-0"



6 PLAN @ TOILET
A13 SCALE: 3/8"=1'-0"



5 PLAN @ TOILET
A13 SCALE: 3/8"=1'-0"

GENERAL NOTES:

- FOR TOILET ACCESSORIES TAGS 4 ALL TOILET, KITCHEN & LOCKER ROOM INTERIOR ELEVATIONS SEE DRAWING A6.1
- FOR DRAINAGE DETAILS REFER TO PLUMBING DRAWINGS
- COORDINATE WITH MEP DRAWINGS FOR ALL OTHER WORKS

ITEM	ACCESSORY	MANUF. / MODEL OR APPROVED EQUAL	REMARKS
1	TOILET TISSUE HOLDER (DUAL ROLL)	BRADLEY 5224	
2	GRAB BAR 36"	BRADLEY 812	MOUNT # 34" AFF
3	GRAB BAR 42"	BRADLEY 812	MOUNT # 34" AFF
4	MIRROR 24" x 36"	BRADLEY 180-2436	
5	PAPER TOWEL DISPENSER	BRADLEY 2442-10	
6	GRAB BAR 18"	BRADLEY 812	MOUNT # 39" AFF VERTICALLY
7	SEAT COVER DISPENSER	BRADLEY 5847	
8	NOT USED		
9	MOP HOLDER	BRADLEY MODEL 9953	MOUNT # 5'-0" AFF
10	SOAP DISPENSER (LAVATORY MOUNTED)	BRADLEY 6326	
11	SHOWER PAN/ TRAY FOR TOILET		
12	SHOWER PAN/ TRAY FOR JANITOR SINK		
13	SHOWER		
14	NOT USED		
15	NOT USED		
16	NOT USED		

